



ELECTRONIC COPY

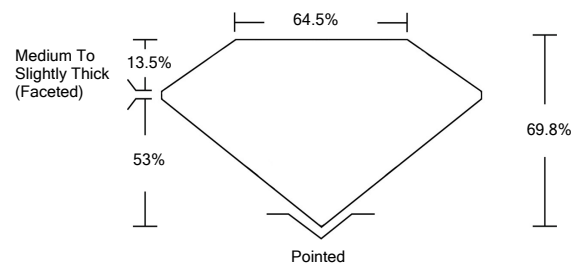
LABORATORY GROWN DIAMOND REPORT

| | |
|---------------------------------------|-------------------------------------|
| February 21, 2022 | |
| IGI Report Number | LG516276926 |
| Description | LABORATORY GROWN DIAMOND |
| Shape and Cutting Style | SQUARE CUSHION BRILLIANT |
| Measurements | 6.59 X 6.50 X 4.54 MM |
| GRADING RESULTS | |
| Carat Weight | 1.54 CARAT |
| Color Grade | E |
| Clarity Grade | SI 1 |
| ADDITIONAL GRADING INFORMATION | |
| Polish | EXCELLENT |
| Symmetry | EXCELLENT |
| Fluorescence | NONE |
| Inscription(s) | LABGROWN IGI LG516276926 |

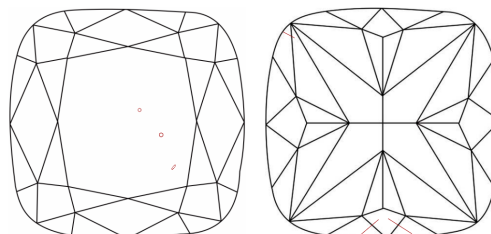
Comments: As Grown - No indication of post-growth treatment.
This Laboratory Grown Diamond was created by High Pressure High Temperature (HPHT) growth process. Type II

LG516276926

PROPORTIONS



CLARITY CHARACTERISTICS

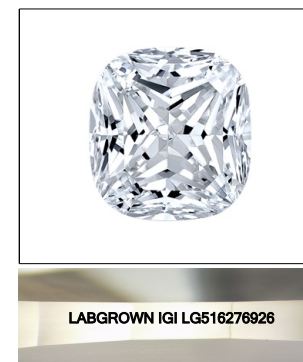


KEY TO SYMBOLS

Red symbols indicate internal characteristics.
Green symbols indicate external characteristics.

GRADING SCALES

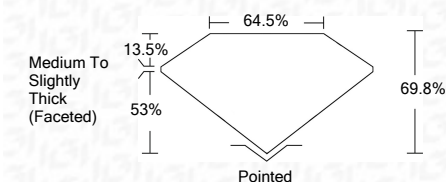
| | | | | | | |
|-----------------------------|------------------------------|-----------------------------|------------------------|-------------------|-----------|---|
| COLOR GRADING SCALE | CL | NC | FT | VLT | LT | |
| | COLORLESS D-F | NEAR COLORLESS G-J | FAINT K-M | VERY LIGHT N-R | LIGHT S-Z | |
| CLARITY (10x) GRADING SCALE | FL | IF | VVS | VS | SI | I |
| | FLAWLESS INTERNALLY FLAWLESS | VERY VERY SLIGHTLY INCLUDED | VERY SLIGHTLY INCLUDED | SLIGHTLY INCLUDED | INCLUDED | |



LASERSCRIBESM

Sample Image Used

| | |
|-------------------------|-------------------------------------|
| February 21, 2022 | |
| IGI Report Number | LG516276926 |
| Description | LABORATORY GROWN DIAMOND |
| Shape and Cutting Style | SQUARE CUSHION BRILLIANT |
| Measurements | 6.59 X 6.50 X 4.54 MM |
| GRADING RESULTS | |
| Carat Weight | 1.54 CARAT |
| Color Grade | E |
| Clarity Grade | SI 1 |



| | |
|---------------------------------------|---------------------------------|
| ADDITIONAL GRADING INFORMATION | |
| Polish | EXCELLENT |
| Symmetry | EXCELLENT |
| Fluorescence | NONE |
| Inscription(s) | LABGROWN IGI LG516276926 |

Comments: As Grown - No indication of post-growth treatment.
This Laboratory Grown Diamond was created by High Pressure High Temperature (HPHT) growth process. Type II



IGI

| | |
|-------------------|--|
| February 21, 2022 | IGI Report No. LG516276926 |
| | SQUARE CUSHION BRILLIANT |
| | 6.59 X 6.50 X 4.54 MM |
| | Carat Weight 1.54 CARAT |
| | Color Grade E |
| | Clarity Grade SI 1 |
| | Depth 69.8% |
| | Table 53% |
| | Girdle Medium To Slightly Thick (Faceted) |
| | Culet Pointed |
| | Polish EXCELLENT |
| | Symmetry EXCELLENT |
| | Fluorescence NONE |
| | Inscription(s) LABGROWN IGI LG516276926 |
| | Comments: As Grown - No indication of post-growth treatment. This Laboratory Grown Diamond was created by High Pressure High Temperature (HPHT) growth process. Type II |

