



ELECTRONIC COPY

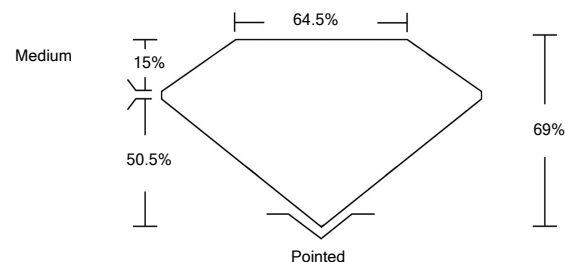
LABORATORY GROWN DIAMOND REPORT

February 15, 2022	
IGI Report Number	LG516277669
Description	LABORATORY GROWN DIAMOND
Shape and Cutting Style	CUT CORNERED RECTANGULAR MODIFIED BRILLIANT
Measurements	8.09 X 5.81 X 4.01 MM
GRADING RESULTS	
Carat Weight	1.58 CARAT
Color Grade	D
Clarity Grade	VS 2
ADDITIONAL GRADING INFORMATION	
Polish	EXCELLENT
Symmetry	EXCELLENT
Fluorescence	NONE
Inscription(s)	LABGROWN IGI LG516277669

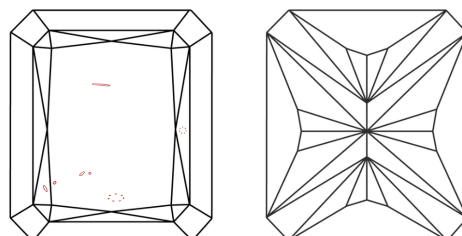
Comments: As Grown - No indication of post-growth treatment.
This Laboratory Grown Diamond was created by High Pressure High Temperature (HPHT) growth process. Type II

LG516277669

PROPORTIONS



CLARITY CHARACTERISTICS

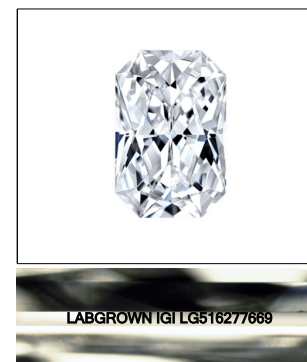


KEY TO SYMBOLS

Red symbols indicate internal characteristics.
Green symbols indicate external characteristics.

GRADING SCALES

COLOR GRADING SCALE	CL	NC	FT	VLT	LT	
	COLORLESS D-F	NEAR COLORLESS G-J	FAINT K-M	VERY LIGHT N-R	LIGHT S-Z	
CLARITY (10x) GRADING SCALE	FL	IF	VVS	VS	SI	I
	FLAWLESS INTERNALLY FLAWLESS	VERY VERY SLIGHTLY INCLUDED	VERY SLIGHTLY INCLUDED	SLIGHTLY INCLUDED	INCLUDED	

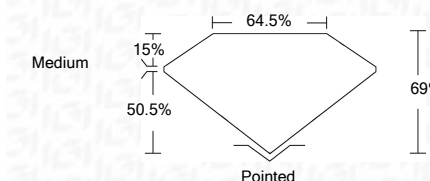


LASERSCRIBESM

Sample Image Used

February 15, 2022	
IGI Report Number	LG516277669
Description	LABORATORY GROWN DIAMOND
Shape and Cutting Style	CUT CORNERED RECTANGULAR MODIFIED BRILLIANT
Measurements	8.09 X 5.81 X 4.01 MM

GRADING RESULTS	
Carat Weight	1.58 CARAT
Color Grade	D
Clarity Grade	VS 2



ADDITIONAL GRADING INFORMATION	
Polish	EXCELLENT
Symmetry	EXCELLENT
Fluorescence	NONE
Inscription(s)	LABGROWN IGI LG516277669

Comments: As Grown - No indication of post-growth treatment.
This Laboratory Grown Diamond was created by High Pressure High Temperature (HPHT) growth process. Type II



IGI

February 15, 2022	
IGI Report No. LG516277669	
CUT CORNERED RECT. MODIFIED BRILLIANT	
8.09 X 5.81 X 4.01 MM	
1.58 CARAT	
D	
VS 2	
69%	
64.5%	
Medium	
Pointed	
EXCELLENT	
EXCELLENT	
NONE	
LABGROWN IGI LG516277669	

As Grown - No indication of post-growth treatment.
This Laboratory Grown Diamond was created by High Pressure High Temperature (HPHT) growth process. Type II