



**INTERNATIONAL  
GEMOLOGICAL  
INSTITUTE**

**LABORATORY GROWN DIAMOND REPORT**

**IGI LABORATORY GROWN DIAMOND IDENTIFICATION REPORT**

February 27, 2022  
 IGI Report Number LG517200728  
 Description LABORATORY GROWN DIAMOND  
 Shape and Cutting Style ROUND BRILLIANT  
 Measurements 6.17 - 6.19 X 3.85 MM

**GRADING RESULTS**

Carat Weight 0.91 CARAT  
 Color Grade D  
 Clarity Grade VS 1  
 Cut Grade IDEAL

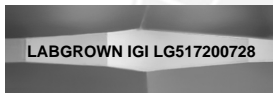
**ADDITIONAL GRADING INFORMATION**

Polish EXCELLENT  
 Symmetry EXCELLENT  
 Fluorescence NONE  
 Inscription(s) LABGROWN IGI LG517200728

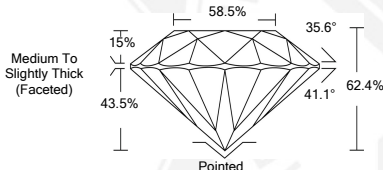
Comments: As Grown - No indication of post-growth treatment.  
 This Laboratory Grown Diamond was created by High Pressure High Temperature (HPHT) growth process.  
 Type II

**ELECTRONIC COPY LABORATORY GROWN  
DIAMOND REPORT**

**LG517200728**



**LASERSCRIBE<sup>SM</sup>**  
Sample Images Used



**IGI LABORATORY GROWN  
DIAMOND ID REPORT**

February 27, 2022  
 IGI Report Number LG517200728  
**ROUND BRILLIANT**  
**6.17 - 6.19 X 3.85 MM**  
 Carat Weight 0.91 CARAT  
 Color Grade D  
 Clarity Grade VS 1  
 Cut Grade IDEAL  
 Polish EXCELLENT  
 Symmetry EXCELLENT  
 Fluorescence NONE  
 Inscription(s) LABGROWN IGI  
 LG517200728

Comments: As Grown - No indication of post-growth treatment.  
 This Laboratory Grown Diamond was created by High Pressure High Temperature (HPHT) growth process.  
 Type II

**IGI LABORATORY GROWN  
DIAMOND ID REPORT**

February 27, 2022  
 IGI Report Number LG517200728  
**ROUND BRILLIANT**  
**6.17 - 6.19 X 3.85 MM**  
 Carat Weight 0.91 CARAT  
 Color Grade D  
 Clarity Grade VS 1  
 Cut Grade IDEAL  
 Polish EXCELLENT  
 Symmetry EXCELLENT  
 Fluorescence NONE  
 Inscription(s) LABGROWN IGI  
 LG517200728

Comments: As Grown - No indication of post-growth treatment.  
 This Laboratory Grown Diamond was created by High Pressure High Temperature (HPHT) growth process.  
 Type II

THIS DOCUMENT WAS PRODUCED WITH THE FOLLOWING SECURITY MEASURES: SPECIAL DOCUMENT PAPER, INK SCREENS, WATERMARK, BACKGROUND DESIGN, HOLOGRAM AND OTHER SECURITY FEATURES NOT LISTED AND DO EXCEEDED DOCUMENT SECURITY INDUSTRY GUIDELINES.

For Terms & Conditions and to verify this report, please visit [www.igi.org](http://www.igi.org)