



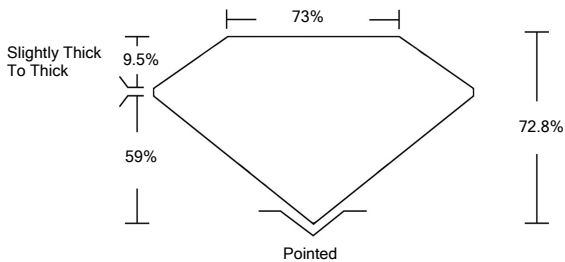
LABORATORY GROWN DIAMOND REPORT

February 25, 2022	
IGI Report Number	LG517212090
Description	LABORATORY GROWN DIAMOND
Shape and Cutting Style	PRINCESS CUT
Measurements	6.52 X 6.50 X 4.73 MM
GRADING RESULTS	
Carat Weight	1.76 CARAT
Color Grade	H
Clarity Grade	VVS 2
ADDITIONAL GRADING INFORMATION	
Polish	EXCELLENT
Symmetry	EXCELLENT
Fluorescence	NONE
Inscription(s)	LABGROWN IGI LG517212090

Comments: This Laboratory Grown Diamond was created by Chemical Vapor Deposition (CVD) growth process and may include post-growth treatment.
Type IIa

LG517212090

PROPORTIONS



CLARITY CHARACTERISTICS



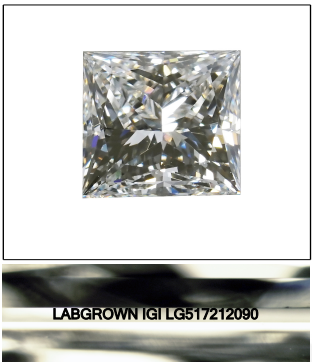
KEY TO SYMBOLS

Red symbols indicate internal characteristics.
Green symbols indicate external characteristics.

LABORATORY GROWN
DIAMOND REPORT

GRADING SCALES

COLOR GRADING SCALE	CL		NC		FT		VLT		LT	
	COLORLESS D-F		NEAR COLORLESS G-J		FAINT K-M		VERY LIGHT N-R		LIGHT S-Z	
CLARITY (10x) GRADING SCALE	FL	IF	VVS		VS		SI		I	
	FLAWLESS INTERNALLY FLAWLESS		VERY VERY SLIGHTLY INCLUDED		VERY SLIGHTLY INCLUDED		SLIGHTLY INCLUDED		INCLUDED	

**LASERSCRIBESM**

Sample Image Used

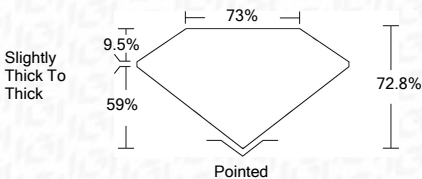


© IGI 2020, International Gemological Institute

FD - 10 20

LABORATORY GROWN DIAMOND REPORT

February 25, 2022	
IGI Report Number	LG517212090
Description	LABORATORY GROWN DIAMOND
Shape and Cutting Style	PRINCESS CUT
Measurements	6.52 X 6.50 X 4.73 MM
GRADING RESULTS	
Carat Weight	1.76 CARAT
Color Grade	H
Clarity Grade	VVS 2



ADDITIONAL GRADING INFORMATION

Polish	EXCELLENT
Symmetry	EXCELLENT
Fluorescence	NONE
Inscription(s)	LABGROWN IGI LG517212090

Comments: This Laboratory Grown Diamond was created by Chemical Vapor Deposition (CVD) growth process and may include post-growth treatment.
Type IIa



February 25, 2022	IGI Report No LG517212090	
PRINCESS CUT	1.76 CARAT	
4.73 MM	H	
Carat Weight	VVS 2	
Color Grade	72.9%	
Clarity Grade	75%	
Depth	Slightly Thick To Thick	
Table	Polished	
Girdle	EXCELLENT	
Culet	EXCELLENT	
Polish	EXCELLENT	
Symmetry	NONE	
Fluorescence	LAB-GROWN G1	
Inscriptions(s)	LG517212090	
Comments:		
This Laboratory Grown Diamond was created by Chemical Vapor Deposition (CVD) growth process and may include post-growth treatment.		
Type IIa		