



ELECTRONIC COPY

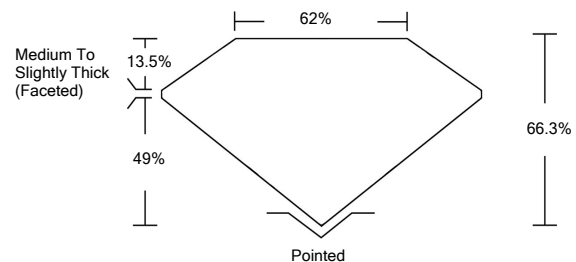
LABORATORY GROWN DIAMOND REPORT

| | |
|---------------------------------------|-------------------------------------|
| February 16, 2022 | |
| IGI Report Number | LG517285201 |
| Description | LABORATORY GROWN DIAMOND |
| Shape and Cutting Style | SQUARE CUSHION BRILLIANT |
| Measurements | 9.80 X 9.70 X 6.43 MM |
| GRADING RESULTS | |
| Carat Weight | 4.82 CARATS |
| Color Grade | H |
| Clarity Grade | VS 1 |
| ADDITIONAL GRADING INFORMATION | |
| Polish | EXCELLENT |
| Symmetry | EXCELLENT |
| Fluorescence | NONE |
| Inscription(s) | LABGROWN IGI LG517285201 |

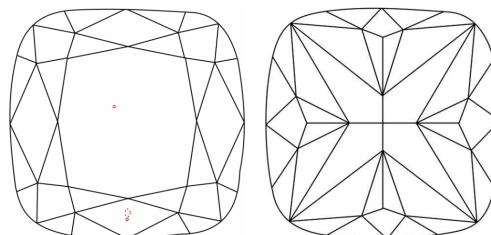
Comments: This Laboratory Grown Diamond was created by Chemical Vapor Deposition (CVD) growth process and may include post-growth treatment.
Type IIa

LG517285201

PROPORTIONS



CLARITY CHARACTERISTICS

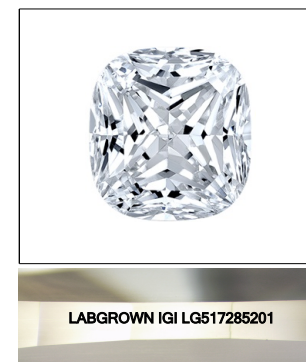


KEY TO SYMBOLS

Red symbols indicate internal characteristics.
Green symbols indicate external characteristics.

GRADING SCALES

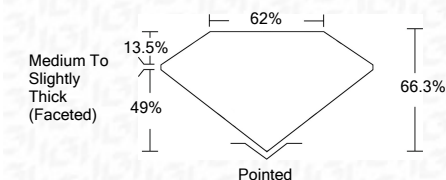
| | | | | | | |
|-----------------------------|------------------------------|-----------------------------|------------------------|-------------------|-----------|----------|
| COLOR GRADING SCALE | CL | NC | FT | VL | LT | |
| | COLORLESS D-F | NEAR COLORLESS G-J | FAINT K-M | VERY LIGHT N-R | LIGHT S-Z | |
| CLARITY (10x) GRADING SCALE | FL | IF | VVS | VS | SI | I |
| | FLAWLESS INTERNALLY FLAWLESS | VERY VERY SLIGHTLY INCLUDED | VERY SLIGHTLY INCLUDED | SLIGHTLY INCLUDED | INCLUDED | INCLUDED |



LASERSCRIBESM

Sample Image Used

| | |
|-------------------------|-------------------------------------|
| February 16, 2022 | |
| IGI Report Number | LG517285201 |
| Description | LABORATORY GROWN DIAMOND |
| Shape and Cutting Style | SQUARE CUSHION BRILLIANT |
| Measurements | 9.80 X 9.70 X 6.43 MM |
| GRADING RESULTS | |
| Carat Weight | 4.82 CARATS |
| Color Grade | H |
| Clarity Grade | VS 1 |



| | |
|---------------------------------------|---------------------------------|
| ADDITIONAL GRADING INFORMATION | |
| Polish | EXCELLENT |
| Symmetry | EXCELLENT |
| Fluorescence | NONE |
| Inscription(s) | LABGROWN IGI LG517285201 |

Comments: This Laboratory Grown Diamond was created by Chemical Vapor Deposition (CVD) growth process and may include post-growth treatment.
Type IIa



IGI

| | |
|---------------------------------|---|
| February 16, 2022 | |
| IGI Report No. LG517285201 | |
| SQUARE CUSHION BRILLIANT | |
| 9.80 X 9.70 X 6.43 MM | |
| Carat Weight | 4.82 CARATS |
| Color Grade | H |
| Clarity Grade | VS 1 |
| Depth | 66.3% |
| Table | 62% |
| Girdle | Medium To Slightly Thick (Faceted) |
| Culet | Pointed |
| Polish | EXCELLENT |
| Symmetry | EXCELLENT |
| Fluorescence | NONE |
| Inscription(s) | LABGROWN IGI LG517285201 |
| Comments: | |

This Laboratory Grown Diamond was created by Chemical Vapor Deposition (CVD) growth process and may include post-growth treatment.
Type IIa