



**INTERNATIONAL
GEMOLOGICAL
INSTITUTE**

ELECTRONIC COPY LABORATORY GROWN
DIAMOND REPORT

LG517286018

**IGI LABORATORY GROWN
DIAMOND ID REPORT**

February 21, 2022
IGI Report Number **LG517286018**
ROUND BRILLIANT
5.57 - 5.61 X 3.50 MM
Carat Weight 0.67 CARAT
Color Grade F
Clarity Grade VS 1
Cut Grade IDEAL
Polish EXCELLENT
Symmetry EXCELLENT
Fluorescence NONE
Inscription(s) LABGROWN IGI
LG517286018

Comments: As Grown - No indication of post-growth treatment.
This Laboratory Grown Diamond was created by High Pressure High Temperature (HPHT) growth process.
Type II

LABORATORY GROWN DIAMOND REPORT

IGI LABORATORY GROWN DIAMOND IDENTIFICATION REPORT

February 21, 2022
IGI Report Number LG517286018
Description LABORATORY GROWN DIAMOND
Shape and Cutting Style ROUND BRILLIANT
Measurements 5.57 - 5.61 X 3.50 MM

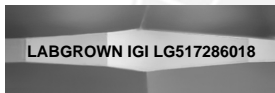
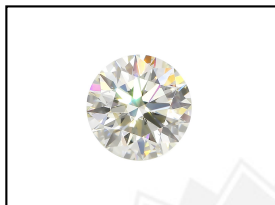
GRADING RESULTS

Carat Weight 0.67 CARAT
Color Grade F
Clarity Grade VS 1
Cut Grade IDEAL

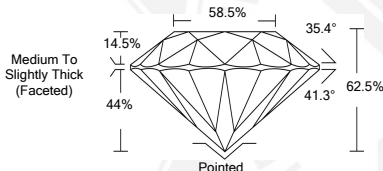
ADDITIONAL GRADING INFORMATION

Polish EXCELLENT
Symmetry EXCELLENT
Fluorescence NONE
Inscription(s) LABGROWN IGI LG517286018

Comments: As Grown - No indication of post-growth treatment.
This Laboratory Grown Diamond was created by High Pressure High Temperature (HPHT) growth process.
Type II



LASERSCRIBE SM
Sample Images Used



**IGI LABORATORY GROWN
DIAMOND ID REPORT**

February 21, 2022
IGI Report Number **LG517286018**
ROUND BRILLIANT
5.57 - 5.61 X 3.50 MM
Carat Weight 0.67 CARAT
Color Grade F
Clarity Grade VS 1
Cut Grade IDEAL
Polish EXCELLENT
Symmetry EXCELLENT
Fluorescence NONE
Inscription(s) LABGROWN IGI
LG517286018

Comments: As Grown - No indication of post-growth treatment.
This Laboratory Grown Diamond was created by High Pressure High Temperature (HPHT) growth process.
Type II

THIS DOCUMENT WAS PRODUCED WITH THE FOLLOWING SECURITY MEASURES: SPECIAL DOCUMENT PAPER, INK SCREENS, WATERMARK, BACKGROUND DESIGN, HOLOGRAM AND OTHER SECURITY FEATURES NOT LISTED AND DO EXCEED DOCUMENT SECURITY INDUSTRY GUIDELINES.

For Terms & Conditions and to verify this report, please visit www.igi.org