



**ELECTRONIC COPY**

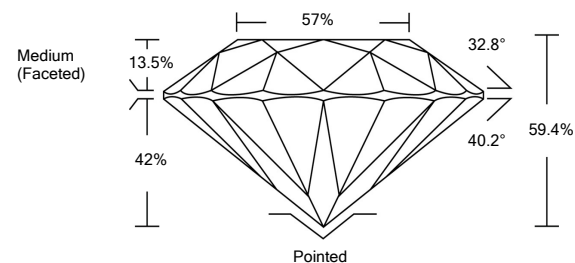
LG517289195

**LABORATORY GROWN DIAMOND REPORT**

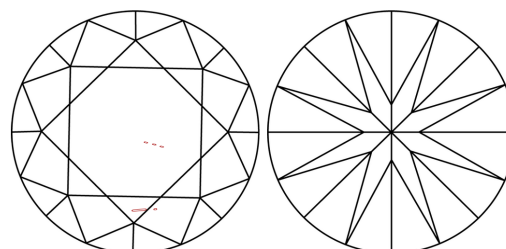
**GRADING SCALES**

COLOR GRADING SCALE	CL	NC	FT	VL	LT	
	COLORLESS D-F	NEAR COLORLESS G-J	FAINT K-M	VERY LIGHT N-R	LIGHT S-Z	
CLARITY (10x) GRADING SCALE	FL	IF	VVS	VS	SI	I
	FLAWLESS INTERNALLY FLAWLESS	VERY VERY SLIGHTLY INCLUDED	VERY SLIGHTLY INCLUDED	SLIGHTLY INCLUDED	INCLUDED	

**PROPORTIONS**

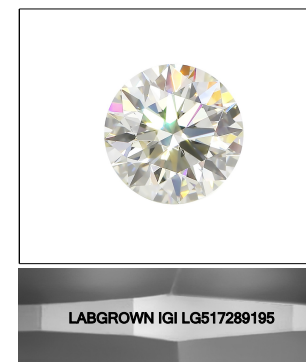


**CLARITY CHARACTERISTICS**



**KEY TO SYMBOLS**

Red symbols indicate internal characteristics.  
Green symbols indicate external characteristics.



**LASERSCRIBE<sup>SM</sup>**

Sample Image Used

February 21, 2022

IGI Report Number

**LG517289195**

Description

**LABORATORY GROWN  
DIAMOND**

Shape and Cutting Style

**ROUND BRILLIANT**

Measurements

**7.57 - 7.60 X 4.51 MM**

**GRADING RESULTS**

Carat Weight

**1.58 CARAT**

Color Grade

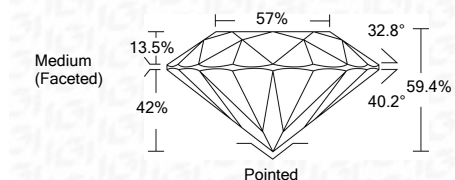
**D**

Clarity Grade

**VS 2**

Cut Grade

**IDEAL**



**ADDITIONAL GRADING INFORMATION**

Polish

**EXCELLENT**

Symmetry

**EXCELLENT**

Fluorescence

**NONE**

Inscription(s)

**LABGROWN IGI LG517289195**

Comments: As Grown - No indication of post-growth treatment.  
This Laboratory Grown Diamond was created by High Pressure High Temperature (HPHT) growth process.  
Type II

February 21, 2022

IGI Report Number

**LG517289195**

Description

**LABORATORY GROWN  
DIAMOND**

Shape and Cutting Style

**ROUND BRILLIANT**

Measurements

**7.57 - 7.60 X 4.51 MM**

**GRADING RESULTS**

Carat Weight

**1.58 CARAT**

Color Grade

**D**

Clarity Grade

**VS 2**

Cut Grade

**IDEAL**

**ADDITIONAL GRADING INFORMATION**

Polish

**EXCELLENT**

Symmetry

**EXCELLENT**

Fluorescence

**NONE**

Inscription(s)

**LABGROWN IGI LG517289195**

Comments: As Grown - No indication of post-growth treatment.  
This Laboratory Grown Diamond was created by High Pressure High Temperature (HPHT) growth process.  
Type II



**IGI**

February 21, 2022	IGI Report No. LG517289195	1.58 CARAT	D	Pointed
IGI Report No. LG517289195	ROUND BRILLIANT	VS 2	EXCELLENT	EXCELLENT
7.57 - 7.60 X 4.51 MM	7.57 - 7.60 X 4.51 MM	IDEAL	EXCELLENT	EXCELLENT
Carat Weight	1.58 CARAT	59.4%	NONE	NONE
Color Grade	D	57%	LABGROWN IGI	LABGROWN IGI
Clarity Grade	VS 2	Medium (Faceted)	LG517289195	LG517289195
Cut Grade	IDEAL			
Depth	59.4%			
Table	57%			
Girdle	Medium (Faceted)			
Culet	Pointed			
Polish	EXCELLENT			
Symmetry	EXCELLENT			
Fluorescence	NONE			
Inscription(s)	LABGROWN IGI			
	LG517289195			

Comments: As Grown - No indication of post-growth treatment.  
This Laboratory Grown Diamond was created by High Pressure High Temperature (HPHT) growth process.  
Type II