



ELECTRONIC COPY

LABORATORY GROWN DIAMOND REPORT

March 1, 2022

IGI Report Number **LG517293963**

Description	LABORATORY GROWN DIAMOND
Shape and Cutting Style	ROUND BRILLIANT

Measurements	8.13 - 8.19 X 4.95 MM
--------------	-----------------------

GRADING RESULTS

Carat Weight	2.02 CARATS
Color Grade	D
Clarity Grade	SI 2
Cut Grade	IDEAL

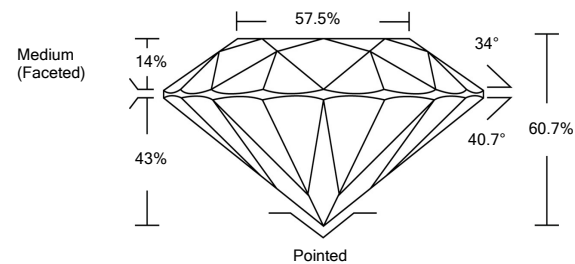
ADDITIONAL GRADING INFORMATION

Polish	EXCELLENT
Symmetry	EXCELLENT
Fluorescence	NONE
Inscription(s)	LABGROWN IGI LG517293963

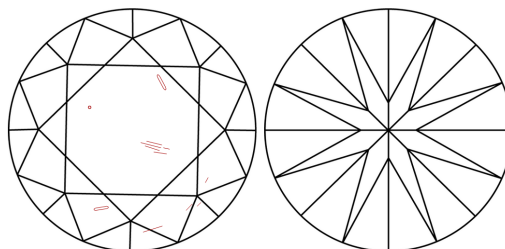
Comments: As Grown - No indication of post-growth treatment.
This Laboratory Grown Diamond was created by High Pressure High Temperature (HPHT) growth process.
Type II

LG517293963

PROPORTIONS



CLARITY CHARACTERISTICS

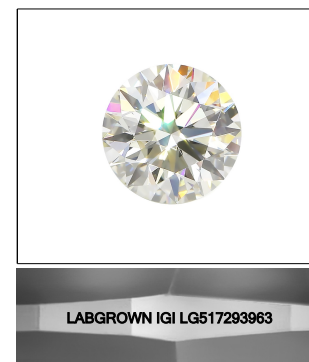


KEY TO SYMBOLS

Red symbols indicate internal characteristics.
Green symbols indicate external characteristics.

GRADING SCALES

COLOR GRADING SCALE	CL		NC		FT		VLT		LT	
	COLORLESS D-F		NEAR COLORLESS G-J		FAINT K-M		VERY LIGHT N-R		LIGHT S-Z	
CLARITY (10x) GRADING SCALE	FL IF		VVS		VS		SI		I	
	FLAWLESS INTERNALLY		VERY VERY SLIGHTLY INCLUDED		VERY SLIGHTLY INCLUDED		SLIGHTLY INCLUDED		INCLUDED	

LASERSCRIBESM

Sample Image Used



© IGI 2020, International Gemological Institute

FD - 10 20

THIS DOCUMENT WAS PRODUCED WITH THE FOLLOWING SECURITY MEASURES: SPECIAL DOCUMENT PAPER, INK SCREENS, WATERMARK, BACKGROUND DESIGNS, HOLOGRAM AND OTHER SECURITY FEATURES NOT LISTED AND DO EXCEED DOCUMENT SECURITY INDUSTRY GUIDELINES

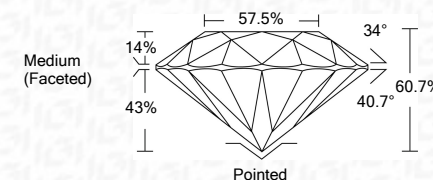
LABORATORY GROWN DIAMOND REPORT

March 1, 2022	
IGI Report Number	LG517293963
Description	LABORATORY GROWN

Shape and Cutting Style	ROUND BRILLIANT
Measurements	8.13 - 8.19 X 4.95 MM

GRADING RESULTS

Carat Weight	2.02 CARATS
Color Grade	D
Clarity Grade	SI 2
Cut Grade	IDEAL



ADDITIONAL GRADING INFORMATION

Polish	EXCELLENT
Symmetry	EXCELLENT
Fluorescence	NONE
Inscription(s)	LABGROWN IGI LG517293963

Comments: As Grown - No indication of post-growth treatment.
This Laboratory Grown Diamond was created by High Pressure High Temperature (HPHT) growth process.
Type II



March 1, 2022	IGI Report No. LG87238983
ROUND BRILLIANT	
2.02 CARATS	
D	SI 2
	IDEAL
	80.7%
	57.5%
	Medium (Faceted)
	Polished
	EXCELLENT
	EXCELLENT
	NONE
	LABGROWN (G1 LG87238983)
	Comments: No indication of post-growth treatment.
	As Graded: This Laboratory Grown Diamond was created by High Pressure High Temperature (HPHT) Type IIa.