



**INTERNATIONAL  
GEMOLOGICAL  
INSTITUTE**

**ELECTRONIC COPY**

**LABORATORY GROWN  
DIAMOND REPORT**

**IGI LABORATORY GROWN  
DIAMOND ID REPORT**

03/29/2022  
IGI Report Number **LG517295540**  
**ROUND BRILLIANT**  
**5.74 - 5.79 X 3.54 MM**  
Carat Weight 0.72 CARAT  
Color Grade E  
Clarity Grade SI 1  
Cut Grade IDEAL  
Polish EXCELLENT  
Symmetry EXCELLENT  
Fluorescence NONE  
Inscription(s) LABGROWN IGI  
LG517295540

Comments: As Grown - No indication of post-growth treatment.  
This Laboratory Grown Diamond was created by Chemical Vapor Deposition (CVD) growth process.

**IGI LABORATORY GROWN  
DIAMOND ID REPORT**

03/29/2022  
IGI Report Number **LG517295540**  
**ROUND BRILLIANT**  
**5.74 - 5.79 X 3.54 MM**  
Carat Weight 0.72 CARAT  
Color Grade E  
Clarity Grade SI 1  
Cut Grade IDEAL  
Polish EXCELLENT  
Symmetry EXCELLENT  
Fluorescence NONE  
Inscription(s) LABGROWN IGI  
LG517295540

Comments: As Grown - No indication of post-growth treatment.  
This Laboratory Grown Diamond was created by Chemical Vapor Deposition (CVD) growth process.

**LABORATORY GROWN DIAMOND REPORT**

**IGI LABORATORY GROWN DIAMOND IDENTIFICATION REPORT**

03/29/2022  
IGI Report Number LG517295540  
Shape and Cutting Style ROUND BRILLIANT  
Measurements 5.74 - 5.79 X 3.54 MM

**GRADING RESULTS**

Carat Weight 0.72 CARAT  
Color Grade E  
Clarity Grade SI 1  
Cut Grade IDEAL

**ADDITIONAL GRADING INFORMATION**

Polish EXCELLENT  
Symmetry EXCELLENT  
Fluorescence NONE  
Inscription(s) LABGROWN IGI LG517295540

Comments: As Grown - No indication of post-growth treatment.  
This Laboratory Grown Diamond was created by Chemical Vapor Deposition (CVD) growth process.

**LG517295540**



**HEARTS & ARROWS**

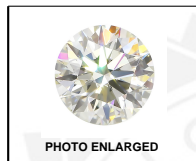
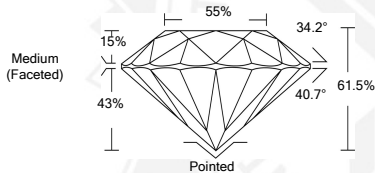


PHOTO ENLARGED



**LASERSCRIBE SM**



 THIS DOCUMENT WAS PRODUCED WITH THE FOLLOWING SECURITY MEASURES: SPECIAL DOCUMENT PAPER, INK SCREENS, WATERMARK BACKGROUND DESIGNS, HOLOGRAM AND OTHER SECURITY FEATURES NOT LISTED AND DO EXCEED DOCUMENT SECURITY INDUSTRY GUIDELINES.

For Terms & Conditions and to verify this report, please visit [www.igi.org](http://www.igi.org)