



# INTERNATIONAL GEMOLOGICAL INSTITUTE

## LABORATORY GROWN DIAMOND REPORT

### IGI LABORATORY GROWN DIAMOND IDENTIFICATION REPORT

March 9, 2022  
 IGI Report Number LG519238085  
 Description LABORATORY GROWN DIAMOND  
 Shape and Cutting Style PEAR BRILLIANT  
 Measurements 8.12 X 4.96 X 2.99 MM

### GRADING RESULTS

Carat Weight 0.71 CARAT  
 Color Grade E  
 Clarity Grade VVS 2

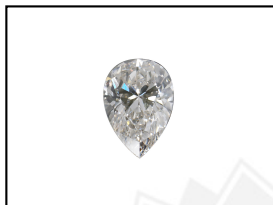
### ADDITIONAL GRADING INFORMATION

Polish EXCELLENT  
 Symmetry VERY GOOD  
 Fluorescence NONE  
 Inscription(s) LABGROWN IGI LG519238085

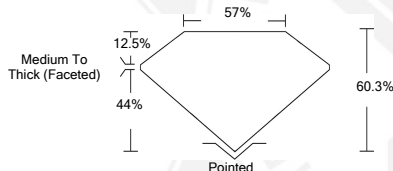
Comments: This Laboratory Grown Diamond was created by Chemical Vapor Deposition (CVD) growth process and may include post-growth treatment.  
 Type IIa

## ELECTRONIC COPY LABORATORY GROWN DIAMOND REPORT

LG519238085



**LASERSCRIBE<sup>SM</sup>**  
Sample Images Used



### IGI LABORATORY GROWN DIAMOND ID REPORT

March 9, 2022  
 IGI Report Number LG519238085  
**PEAR BRILLIANT**  
**8.12 X 4.96 X 2.99 MM**  
 Carat Weight 0.71 CARAT  
 Color Grade E  
 Clarity Grade VVS 2  
 Polish EXCELLENT  
 Symmetry VERY GOOD  
 Fluorescence NONE  
 Inscription(s) LABGROWN IGI LG519238085

Comments: This Laboratory Grown Diamond was created by Chemical Vapor Deposition (CVD) growth process and may include post-growth treatment.  
 Type IIa

### IGI LABORATORY GROWN DIAMOND ID REPORT

March 9, 2022  
 IGI Report Number LG519238085  
**PEAR BRILLIANT**  
**8.12 X 4.96 X 2.99 MM**  
 Carat Weight 0.71 CARAT  
 Color Grade E  
 Clarity Grade VVS 2  
 Polish EXCELLENT  
 Symmetry VERY GOOD  
 Fluorescence NONE  
 Inscription(s) LABGROWN IGI LG519238085

Comments: This Laboratory Grown Diamond was created by Chemical Vapor Deposition (CVD) growth process and may include post-growth treatment.  
 Type IIa



THIS DOCUMENT WAS PRODUCED WITH THE FOLLOWING SECURITY MEASURES: SPECIAL DOCUMENT PAPER, INK SCREENS, WATERMARK, BACKGROUND DESIGN, HOLOGRAM AND OTHER SECURITY FEATURES NOT LISTED AND DO EXCEED DOCUMENT SECURITY INDUSTRY GUIDELINES.

For Terms & Conditions and to verify this report, please visit [www.igi.org](http://www.igi.org)