



**INTERNATIONAL  
GEMOLOGICAL  
INSTITUTE**

**ELECTRONIC COPY** LABORATORY GROWN  
DIAMOND REPORT

**IGI LABORATORY GROWN  
DIAMOND ID REPORT**

March 7, 2022  
IGI Report Number **LG519257013**

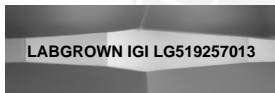
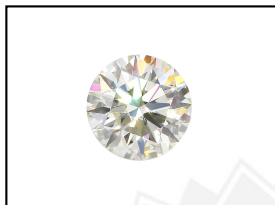
**LABORATORY GROWN DIAMOND REPORT**

**LG519257013**

**ROUND BRILLIANT**  
**6.26 - 6.33 X 3.78 MM**  
Carat Weight 0.93 CARAT  
Color Grade F  
Clarity Grade VS 1  
Cut Grade EXCELLENT  
Polish EXCELLENT  
Symmetry EXCELLENT  
Fluorescence NONE  
Inscription(s) LABGROWN IGI  
LG519257013

**IGI LABORATORY GROWN DIAMOND IDENTIFICATION REPORT**

March 7, 2022  
IGI Report Number LG519257013  
Description LABORATORY GROWN DIAMOND  
Shape and Cutting Style ROUND BRILLIANT  
Measurements 2.66 - 6.33 X 3.78 MM



Comments: This Laboratory Grown Diamond was created by Chemical Vapor Deposition (CVD) growth process and may include post-growth treatment.  
Type IIa

**GRADING RESULTS**

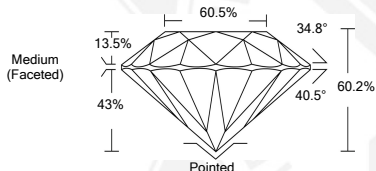
Carat Weight 0.93 CARAT  
Color Grade F  
Clarity Grade VS 1  
Cut Grade EXCELLENT

**LASERSCRIBE<sup>SM</sup>**  
Sample Images Used



**ADDITIONAL GRADING INFORMATION**

Polish EXCELLENT  
Symmetry EXCELLENT  
Fluorescence NONE  
Inscription(s) LABGROWN IGI LG519257013  
Comments: This Laboratory Grown Diamond was created by Chemical Vapor Deposition (CVD) growth process and may include post-growth treatment.  
Type IIa



**IGI LABORATORY GROWN  
DIAMOND ID REPORT**

March 7, 2022  
IGI Report Number **LG519257013**

**ROUND BRILLIANT**  
**6.26 - 6.33 X 3.78 MM**  
Carat Weight 0.93 CARAT  
Color Grade F  
Clarity Grade VS 1  
Cut Grade EXCELLENT  
Polish EXCELLENT  
Symmetry EXCELLENT  
Fluorescence NONE  
Inscription(s) LABGROWN IGI  
LG519257013

Comments: This Laboratory Grown Diamond was created by Chemical Vapor Deposition (CVD) growth process and may include post-growth treatment.  
Type IIa

THIS DOCUMENT WAS PRODUCED WITH THE FOLLOWING SECURITY MEASURES: SPECIAL DOCUMENT PAPER, INK SCREENS, WATERMARK, BACKGROUND DESIGN, HOLOGRAM AND OTHER SECURITY FEATURES NOT LISTED AND DO EXCEED DOCUMENT SECURITY INDUSTRY GUIDELINES.

For Terms & Conditions and to verify this report, please visit [www.igi.org](http://www.igi.org)