

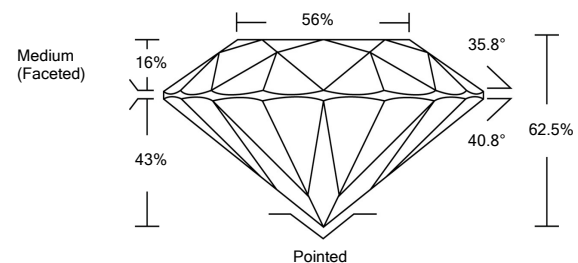


ELECTRONIC COPY

LABORATORY GROWN DIAMOND REPORT

LG519272494

PROPORTIONS



GRADING SCALES

COLOR GRADING SCALE	CL	NC	FT	VLT	LT	
	COLORLESS D-F	NEAR COLORLESS G-J	FAINT K-M	VERY LIGHT N-R	LIGHT S-Z	
CLARITY (10x) GRADING SCALE	FL	IF	VVS	VS	SI	I
	FLAWLESS INTERNALLY FLAWLESS	VERY VERY SLIGHTLY INCLUDED	VERY SLIGHTLY INCLUDED	SLIGHTLY INCLUDED	INCLUDED	

March 17, 2022

IGI Report Number

LG519272494

Description

**LABORATORY GROWN
DIAMOND**

Shape and Cutting Style

ROUND BRILLIANT

Measurements

6.71 - 6.76 X 4.21 MM

GRADING RESULTS

Carat Weight

1.17 CARAT

Color Grade

G

Clarity Grade

VVS 2

Cut Grade

IDEAL

March 17, 2022

IGI Report Number

LG519272494

Description

**LABORATORY GROWN
DIAMOND**

Shape and Cutting Style

ROUND BRILLIANT

Measurements

6.71 - 6.76 X 4.21 MM

GRADING RESULTS

Carat Weight

1.17 CARAT

Color Grade

G

Clarity Grade

VVS 2

Cut Grade

IDEAL

ADDITIONAL GRADING INFORMATION

Polish

EXCELLENT

Symmetry

EXCELLENT

Fluorescence

NONE

Inscription(s)

LABGROWN IGI LG519272494

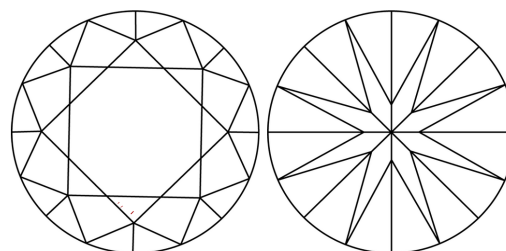
Comments: Faint Blue

As Grown - No indication of post-growth treatment.

This Laboratory Grown Diamond was created by High Pressure High Temperature (HPHT) growth process.

Type II

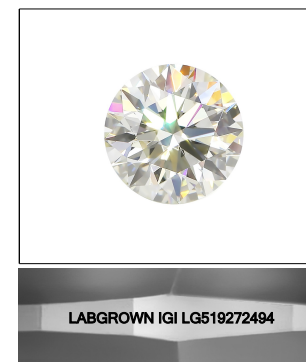
CLARITY CHARACTERISTICS



KEY TO SYMBOLS

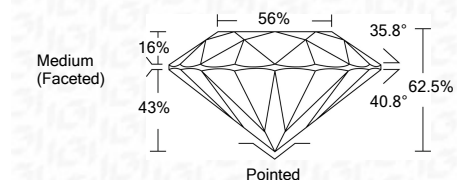
Red symbols indicate internal characteristics.

Green symbols indicate external characteristics.



LASERSCRIBESM

Sample Image Used



ADDITIONAL GRADING INFORMATION

Polish

EXCELLENT

Symmetry

EXCELLENT

Fluorescence

NONE

Inscription(s)

LABGROWN IGI LG519272494

Comments: Faint Blue

As Grown - No indication of post-growth treatment.

This Laboratory Grown Diamond was created by High Pressure High Temperature (HPHT) growth process.

Type II



IGI

March 17, 2022
IGI Report No. LG519272494
ROUND BRILLIANT

6.71 - 6.76 X 4.21 MM
Carat Weight

1.17 CARAT

G

VVS 2

IDEAL

62.5%

56%

Medium (Faceted)

Pointed

EXCELLENT

EXCELLENT

NONE

LABGROWN IGI LG519272494

Comments:

Faint Blue

As Grown - No indication of post-growth

treatment.

This Laboratory Grown Diamond was created

by High Pressure High Temperature (HPHT)

growth process.

Type II