

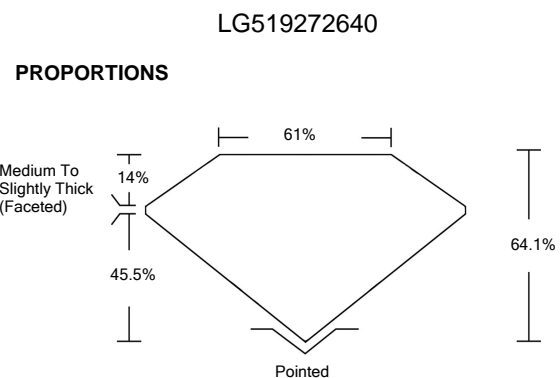


ELECTRONIC COPY

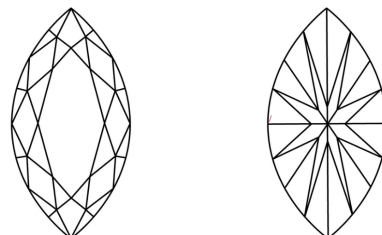
LABORATORY GROWN DIAMOND REPORT

March 17, 2022	
IGI Report Number	LG519272640
Description	LABORATORY GROWN DIAMOND
Shape and Cutting Style	MARQUISE BRILLIANT
Measurements	11.62 X 5.96 X 3.82 MM
GRADING RESULTS	
Carat Weight	1.53 CARAT
Color Grade	F
Clarity Grade	VVS 1
ADDITIONAL GRADING INFORMATION	
Polish	EXCELLENT
Symmetry	EXCELLENT
Fluorescence	NONE
Inscription(s)	LABGROWN IGI LG519272640

Comments: As Grown - No indication of post-growth treatment.
This Laboratory Grown Diamond was created by High Pressure High Temperature (HPHT) growth process. Type II



CLARITY CHARACTERISTICS



KEY TO SYMBOLS

Red symbols indicate internal characteristics.
Green symbols indicate external characteristics.

GRADING SCALES

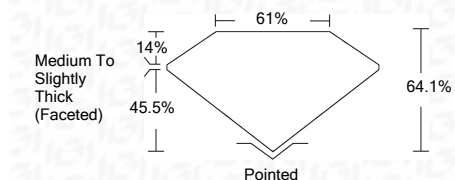
COLOR GRADING SCALE	CL	NC	FT	VLT	LT	
	COLORLESS D-F	NEAR COLORLESS G-J	FAINT K-M	VERY LIGHT N-R	LIGHT S-Z	
CLARITY (10x) GRADING SCALE	FL	IF	VVS	VS	SI	I
	FLAWLESS INTERNALLY FLAWLESS	VERY VERY SLIGHTLY INCLUDED	VERY SLIGHTLY INCLUDED	SLIGHTLY INCLUDED	INCLUDED	



LASERSCRIBESM

Sample Image Used

March 17, 2022	
IGI Report Number	LG519272640
Description	LABORATORY GROWN DIAMOND
Shape and Cutting Style	MARQUISE BRILLIANT
Measurements	11.62 X 5.96 X 3.82 MM
GRADING RESULTS	
Carat Weight	1.53 CARAT
Color Grade	F
Clarity Grade	VVS 1



ADDITIONAL GRADING INFORMATION

Polish	EXCELLENT
Symmetry	EXCELLENT
Fluorescence	NONE
Inscription(s)	LABGROWN IGI LG519272640

Comments: As Grown - No indication of post-growth treatment.
This Laboratory Grown Diamond was created by High Pressure High Temperature (HPHT) growth process. Type II



IGI

March 17, 2022	
IGI Report No. LG519272640	
MARQUISE BRILLIANT	
11.62 X 5.96 X 3.82 MM	
Carat Weight	1.53 CARAT
Color Grade	F
Clarity Grade	VVS 1
Depth	64.1%
Table	61%
Girdle	Medium To Slightly Thick (Faceted)
Culet	Pointed
Polish	EXCELLENT
Symmetry	EXCELLENT
Fluorescence	NONE
Inscription(s)	LABGROWN IGI LG519272640
Comments:	As Grown - No indication of post-growth treatment. This Laboratory Grown Diamond was created by High Pressure High Temperature (HPHT) growth process. Type II