



ELECTRONIC COPY

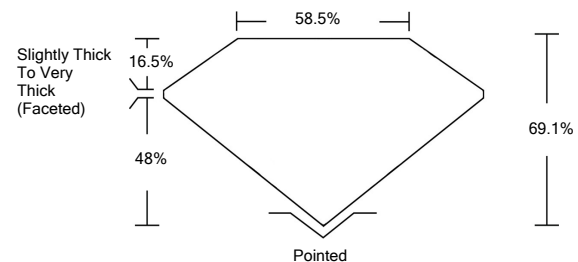
LABORATORY GROWN DIAMOND REPORT

| | |
|---------------------------------------|-------------------------------------|
| March 30, 2022 | |
| IGI Report Number | LG520207556 |
| Description | LABORATORY GROWN DIAMOND |
| Shape and Cutting Style | CUSHION BRILLIANT |
| Measurements | 6.62 X 6.27 X 4.33 MM |
| GRADING RESULTS | |
| Carat Weight | 1.57 CARAT |
| Color Grade | D |
| Clarity Grade | VS 1 |
| ADDITIONAL GRADING INFORMATION | |
| Polish | EXCELLENT |
| Symmetry | EXCELLENT |
| Fluorescence | NONE |
| Inscription(s) | LABGROWN IGI LG520207556 |

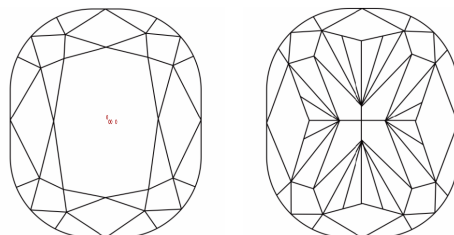
Comments: As Grown - No indication of post-growth treatment.
This Laboratory Grown Diamond was created by High Pressure High Temperature (HPHT) growth process. Type II

LG520207556

PROPORTIONS



CLARITY CHARACTERISTICS

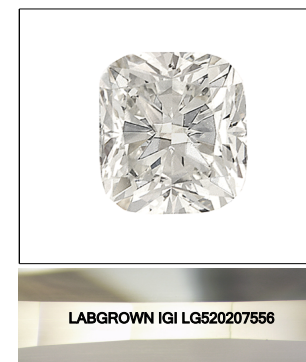


KEY TO SYMBOLS

Red symbols indicate internal characteristics.
Green symbols indicate external characteristics.

GRADING SCALES

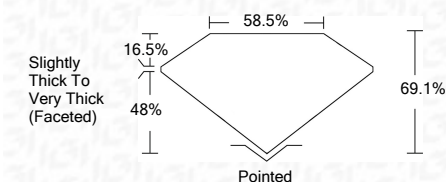
| | | | | | | |
|-----------------------------|------------------------------|-----------------------------|------------------------|-------------------|-----------|---|
| COLOR GRADING SCALE | CL | NC | FT | VL | LT | |
| | COLORLESS D-F | NEAR COLORLESS G-J | FAINT K-M | VERY LIGHT N-R | LIGHT S-Z | |
| CLARITY (10x) GRADING SCALE | FL | IF | VVS | VS | SI | I |
| | FLAWLESS INTERNALLY FLAWLESS | VERY VERY SLIGHTLY INCLUDED | VERY SLIGHTLY INCLUDED | SLIGHTLY INCLUDED | INCLUDED | |



LASERSCRIBESM

Sample Image Used

| | |
|-------------------------|-------------------------------------|
| March 30, 2022 | |
| IGI Report Number | LG520207556 |
| Description | LABORATORY GROWN DIAMOND |
| Shape and Cutting Style | CUSHION BRILLIANT |
| Measurements | 6.62 X 6.27 X 4.33 MM |
| GRADING RESULTS | |
| Carat Weight | 1.57 CARAT |
| Color Grade | D |
| Clarity Grade | VS 1 |



| | |
|---------------------------------------|---------------------------------|
| ADDITIONAL GRADING INFORMATION | |
| Polish | EXCELLENT |
| Symmetry | EXCELLENT |
| Fluorescence | NONE |
| Inscription(s) | LABGROWN IGI LG520207556 |

Comments: As Grown - No indication of post-growth treatment.
This Laboratory Grown Diamond was created by High Pressure High Temperature (HPHT) growth process. Type II



IGI

| | |
|----------------|--|
| March 30, 2022 | IGI Report No. LG520207556 |
| | CUSHION BRILLIANT |
| | 6.62 X 6.27 X 4.33 MM |
| | Carat Weight 1.57 CARAT |
| | Color Grade D |
| | Clarity Grade VS 1 |
| | Depth 69.1% |
| | Table 58.5% |
| | Girdle Slightly Thick To Very Thick (Faceted) |
| | Culet Pointed |
| | Polish EXCELLENT |
| | Symmetry EXCELLENT |
| | Fluorescence NONE |
| | Inscription(s) LABGROWN IGI LG520207556 |
| | Comments: As Grown - No indication of post-growth treatment. This Laboratory Grown Diamond was created by High Pressure High Temperature (HPHT) growth process. Type II |

