



**ELECTRONIC COPY**

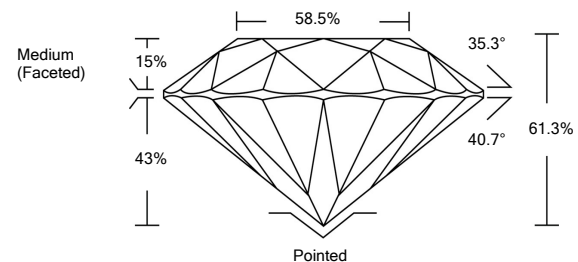
**LABORATORY GROWN DIAMOND REPORT**

|                                       |                                     |
|---------------------------------------|-------------------------------------|
| March 21, 2022                        |                                     |
| IGI Report Number                     | <b>LG520210342</b>                  |
| Description                           | <b>LABORATORY GROWN<br/>DIAMOND</b> |
| Shape and Cutting Style               | <b>ROUND BRILLIANT</b>              |
| Measurements                          | <b>6.73 - 6.76 X 4.14 MM</b>        |
| <b>GRADING RESULTS</b>                |                                     |
| Carat Weight                          | <b>1.17 CARAT</b>                   |
| Color Grade                           | <b>F</b>                            |
| Clarity Grade                         | <b>VVS 2</b>                        |
| Cut Grade                             | <b>IDEAL</b>                        |
| <b>ADDITIONAL GRADING INFORMATION</b> |                                     |
| Polish                                | <b>EXCELLENT</b>                    |
| Symmetry                              | <b>EXCELLENT</b>                    |
| Fluorescence                          | <b>NONE</b>                         |
| Inscription(s)                        | <b>LABGROWN IGI LG520210342</b>     |

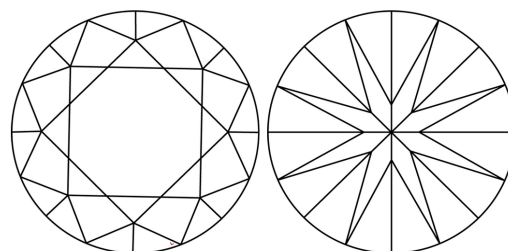
Comments: As Grown - No indication of post-growth treatment.  
This Laboratory Grown Diamond was created by High Pressure High Temperature (HPHT) growth process.  
Type II

LG520210342

**PROPORTIONS**



**CLARITY CHARACTERISTICS**

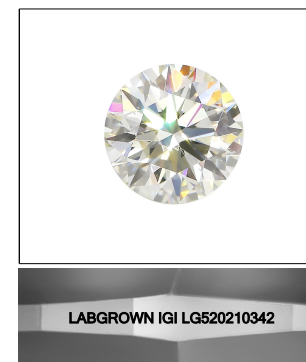


**KEY TO SYMBOLS**

Red symbols indicate internal characteristics.  
Green symbols indicate external characteristics.

**GRADING SCALES**

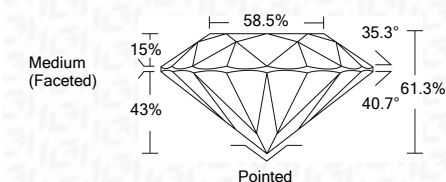
|                             |                              |                             |                        |                   |           |   |
|-----------------------------|------------------------------|-----------------------------|------------------------|-------------------|-----------|---|
| COLOR GRADING SCALE         | CL                           | NC                          | FT                     | VL                | LT        |   |
|                             | COLORLESS D-F                | NEAR COLORLESS G-J          | FAINT K-M              | VERY LIGHT N-R    | LIGHT S-Z |   |
| CLARITY (10x) GRADING SCALE | FL                           | IF                          | VVS                    | VS                | SI        | I |
|                             | FLAWLESS INTERNALLY FLAWLESS | VERY VERY SLIGHTLY INCLUDED | VERY SLIGHTLY INCLUDED | SLIGHTLY INCLUDED | INCLUDED  |   |



**LASERSCRIBE<sup>SM</sup>**

Sample Image Used

|                         |                                     |
|-------------------------|-------------------------------------|
| March 21, 2022          |                                     |
| IGI Report Number       | <b>LG520210342</b>                  |
| Description             | <b>LABORATORY GROWN<br/>DIAMOND</b> |
| Shape and Cutting Style | <b>ROUND BRILLIANT</b>              |
| Measurements            | <b>6.73 - 6.76 X 4.14 MM</b>        |
| <b>GRADING RESULTS</b>  |                                     |
| Carat Weight            | <b>1.17 CARAT</b>                   |
| Color Grade             | <b>F</b>                            |
| Clarity Grade           | <b>VVS 2</b>                        |
| Cut Grade               | <b>IDEAL</b>                        |



|                                       |                                 |
|---------------------------------------|---------------------------------|
| <b>ADDITIONAL GRADING INFORMATION</b> |                                 |
| Polish                                | <b>EXCELLENT</b>                |
| Symmetry                              | <b>EXCELLENT</b>                |
| Fluorescence                          | <b>NONE</b>                     |
| Inscription(s)                        | <b>LABGROWN IGI LG520210342</b> |

Comments: As Grown - No indication of post-growth treatment.  
This Laboratory Grown Diamond was created by High Pressure High Temperature (HPHT) growth process.  
Type II



**IGI**

|  |                                 |
|--|---------------------------------|
| March 21, 2022   |                                 |
| IGI Report No. LG520210342   |                                 |
| <b>ROUND BRILLIANT</b>   |                                 |
| <b>6.73 - 6.76 X 4.14 MM</b>   |                                 |
| Carat Weight   | <b>1.17 CARAT</b>               |
| Color Grade  | <b>F</b>                        |
| Clarity Grade  | <b>VVS 2</b>                    |
| Cut Grade  | <b>IDEAL</b>                    |
| Depth  | <b>61.3%</b>                    |
| Table  | <b>58.5%</b>                    |
| Girdle   | <b>Medium (Faceted)</b>         |
| Culet  | <b>Pointed</b>                  |
| Polish   | <b>EXCELLENT</b>                |
| Symmetry   | <b>EXCELLENT</b>                |
| Fluorescence   | <b>NONE</b>                     |
| Inscription(s)   | <b>LABGROWN IGI LG520210342</b> |
| <p>Comments: As Grown - No indication of post-growth treatment.<br/>This Laboratory Grown Diamond was created by High Pressure High Temperature (HPHT) growth process.<br/>Type II</p> |                                 |

