



ELECTRONIC COPY

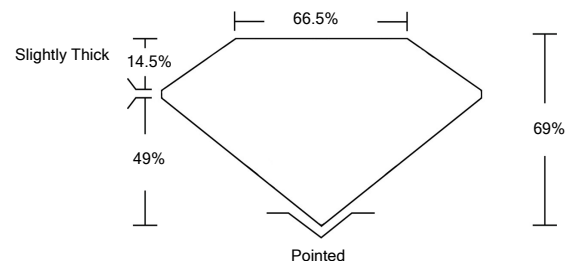
LABORATORY GROWN DIAMOND REPORT

| | |
|---------------------------------------|--|
| March 21, 2022 | |
| IGI Report Number | LG520213326 |
| Description | LABORATORY GROWN DIAMOND |
| Shape and Cutting Style | CUT CORNERED RECTANGULAR MODIFIED BRILLIANT |
| Measurements | 8.67 X 6.62 X 4.57 MM |
| GRADING RESULTS | |
| Carat Weight | 2.23 CARATS |
| Color Grade | F |
| Clarity Grade | VS 1 |
| ADDITIONAL GRADING INFORMATION | |
| Polish | EXCELLENT |
| Symmetry | EXCELLENT |
| Fluorescence | NONE |
| Inscription(s) | LABGROWN IGI LG520213326 |

Comments: As Grown - No indication of post-growth treatment.
This Laboratory Grown Diamond was created by High Pressure High Temperature (HPHT) growth process. Type II

LG520213326

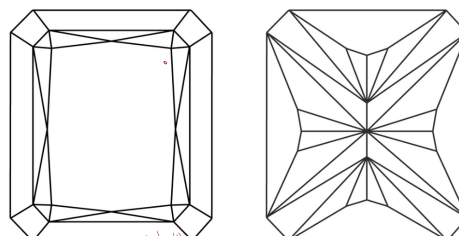
PROPORTIONS



GRADING SCALES

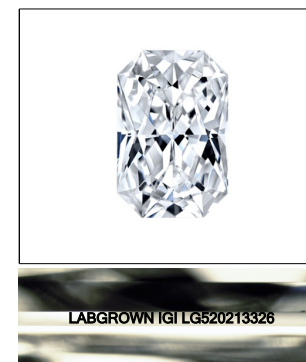
| | | | | | | |
|-----------------------------|------------------------------|-----------------------------|------------------------|-------------------|-----------|---|
| COLOR GRADING SCALE | CL | NC | FT | VLT | LT | |
| | COLORLESS D-F | NEAR COLORLESS G-J | FAINT K-M | VERY LIGHT N-R | LIGHT S-Z | |
| CLARITY (10x) GRADING SCALE | FL | IF | VVS | VS | SI | I |
| | FLAWLESS INTERNALLY FLAWLESS | VERY VERY SLIGHTLY INCLUDED | VERY SLIGHTLY INCLUDED | SLIGHTLY INCLUDED | INCLUDED | |

CLARITY CHARACTERISTICS



KEY TO SYMBOLS

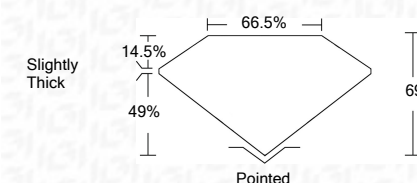
Red symbols indicate internal characteristics.
Green symbols indicate external characteristics.



LASERSCRIBESM

Sample Image Used

| | |
|-------------------------|--|
| March 21, 2022 | |
| IGI Report Number | LG520213326 |
| Description | LABORATORY GROWN DIAMOND |
| Shape and Cutting Style | CUT CORNERED RECTANGULAR MODIFIED BRILLIANT |
| Measurements | 8.67 X 6.62 X 4.57 MM |
| GRADING RESULTS | |
| Carat Weight | 2.23 CARATS |
| Color Grade | F |
| Clarity Grade | VS 1 |



| | |
|---------------------------------------|---------------------------------|
| ADDITIONAL GRADING INFORMATION | |
| Polish | EXCELLENT |
| Symmetry | EXCELLENT |
| Fluorescence | NONE |
| Inscription(s) | LABGROWN IGI LG520213326 |

Comments: As Grown - No indication of post-growth treatment.
This Laboratory Grown Diamond was created by High Pressure High Temperature (HPHT) growth process. Type II



IGI

| | |
|---------------------------------------|---|
| March 21, 2022 | |
| IGI Report No. LG520213326 | |
| CUT CORNERED RECT. MODIFIED BRILLIANT | |
| Rectangular X 4.57 MM | |
| Carat Weight | 2.23 CARATS |
| Color Grade | F |
| Clarity Grade | VS 1 |
| Depth | 69% |
| Table | 66.5% |
| Girdle | Slightly Thick |
| Culet | Pointed |
| Polish | EXCELLENT |
| Symmetry | EXCELLENT |
| Fluorescence | NONE |
| Inscription(s) | LABGROWN IGI LG520213326 |
| Comments: | As Grown - No indication of post-growth treatment. Laboratory Grown Diamond was created by High Pressure High Temperature (HPHT) growth process. Type II |

