



**INTERNATIONAL  
GEMOLOGICAL  
INSTITUTE**

**LABORATORY GROWN DIAMOND REPORT**

**IGI LABORATORY GROWN DIAMOND IDENTIFICATION REPORT**

April 18, 2022  
 IGI Report Number LG520215296  
 Description LABORATORY GROWN DIAMOND  
 Shape and Cutting Style PEAR BRILLIANT  
 Measurements 8.13 X 4.92 X 3.01 MM

**GRADING RESULTS**

Carat Weight 0.71 CARAT  
 Color Grade E  
 Clarity Grade VVS 1

**ADDITIONAL GRADING INFORMATION**

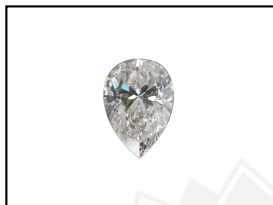
Polish EXCELLENT  
 Symmetry EXCELLENT  
 Fluorescence NONE  
 Inscription(s) LABGROWN IGI LG520215296

Comments: As Grown - No indication of post-growth treatment.  
 This Laboratory Grown Diamond was created by High Pressure High Temperature (HPHT) growth process.  
 Type II

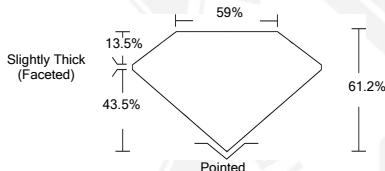
**ELECTRONIC COPY**

**LABORATORY GROWN  
DIAMOND REPORT**

**LG520215296**



**LASERSCRIBE<sup>SM</sup>**  
Sample Images Used



**IGI LABORATORY GROWN  
DIAMOND ID REPORT**

April 18, 2022  
 IGI Report Number **LG520215296**  
**PEAR BRILLIANT**  
**8.13 X 4.92 X 3.01 MM**  
 Carat Weight 0.71 CARAT  
 Color Grade E  
 Clarity Grade VVS 1  
 Polish EXCELLENT  
 Symmetry EXCELLENT  
 Fluorescence NONE  
 Inscription(s) LABGROWN IGI  
 LG520215296

Comments: As Grown - No indication of post-growth treatment.  
 This Laboratory Grown Diamond was created by High Pressure High Temperature (HPHT) growth process.  
 Type II

**IGI LABORATORY GROWN  
DIAMOND ID REPORT**

April 18, 2022  
 IGI Report Number **LG520215296**  
**PEAR BRILLIANT**  
**8.13 X 4.92 X 3.01 MM**  
 Carat Weight 0.71 CARAT  
 Color Grade E  
 Clarity Grade VVS 1  
 Polish EXCELLENT  
 Symmetry EXCELLENT  
 Fluorescence NONE  
 Inscription(s) LABGROWN IGI  
 LG520215296

Comments: As Grown - No indication of post-growth treatment.  
 This Laboratory Grown Diamond was created by High Pressure High Temperature (HPHT) growth process.  
 Type II

THIS DOCUMENT WAS PRODUCED WITH THE FOLLOWING SECURITY MEASURES: SPECIAL DOCUMENT PAPER, INK SCREENS, WATERMARK, BACKGROUND DESIGN, HOLOGRAM AND OTHER SECURITY FEATURES NOT LISTED AND DO EXCEEDED DOCUMENT SECURITY INDUSTRY GUIDELINES.

For Terms & Conditions and to verify this report, please visit [www.igi.org](http://www.igi.org)