



LABORATORY GROWN DIAMOND REPORT

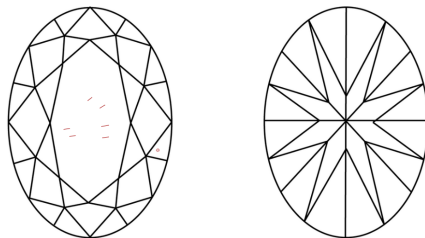
March 15, 2022	
IGI Report Number	LG520285991
Description	LABORATORY GROWN DIAMOND
Shape and Cutting Style	OVAL BRILLIANT
Measurements	8.29 X 5.93 X 3.65 MM
GRADING RESULTS	
Carat Weight	1.11 CARAT
Color Grade	D
Clarity Grade	VS 1
ADDITIONAL GRADING INFORMATION	
Polish	EXCELLENT
Symmetry	EXCELLENT
Fluorescence	NONE
Inscription(s)	LABGROWN IGI LG520285991

Comments: As Grown - No indication of post-growth treatment.
This Laboratory Grown Diamond was created by High Pressure High Temperature (HPHT) growth process.
Type II

Diagram illustrating the proportions of a diamond-shaped object, labeled "Medium (Faceted)". The proportions are defined by percentages relative to the overall dimensions:

- Top width: 15%
- Bottom width: 43.5%
- Left side width: 58%
- Right side width: 61.6%
- Pointed: The bottom edge is pointed.

CLARITY CHARACTERISTICS



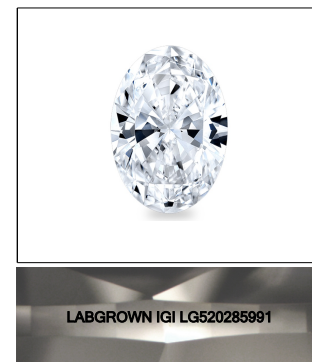
KEY TO SYMBOLS

Red symbols indicate internal characteristics.
Green symbols indicate external characteristics.

LABORATORY GROWN
DIAMOND REPORT

GRADING SCALES

COLOR GRADING SCALE	CL		NC		FT		VLT		LT	
	COLORLESS D-F		NEAR COLORLESS G-J		FAINT K-M		VERY LIGHT N-R		LIGHT S-Z	
CLARITY (10x) GRADING SCALE	FL IF		VVS		VS		SI		I	
	FLAWLESS INTERNALLY FLAWLESS		VERY VERY SLIGHTLY INCLUDED		VERY SLIGHTLY INCLUDED		SLIGHTLY INCLUDED		INCLUDED	



LASERSCRIBESM
Sample Image Used

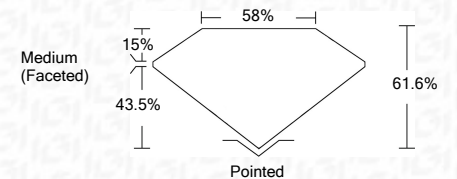


© IGI 2020, International Gemological Institute

FD - 10 20

LABORATORY GROWN DIAMOND REPORT

March 15, 2022	
IGI Report Number	LG520285991
Description	LABORATORY GROWN DIAMOND
Shape and Cutting Style	OVAL BRILLIANT
Measurements	8.29 X 5.93 X 3.65 MM
GRADING RESULTS	
Carat Weight	1.11 CARAT
Color Grade	D
Clarity Grade	VS 1



ADDITIONAL GRADING INFORMATION

Polish	EXCELLENT
Symmetry	EXCELLENT
Fluorescence	NONE
Inscription(s)	LABGROWN IGI LG520285991

Comments: As Grown - No indication of post-growth treatment.
This Laboratory Grown Diamond was created by High Pressure High Temperature (HPHT) growth process.
Type II



March 15, 2022	IGI Report No. LG820265891	
OVAL BRILLIANT	2.29 X 5.58 X 3.85 MM	1.11 CARAT
Color Grade		D
Clarity Grade		VS 1
Depth		61.6%
Table		58%
Girdle		Medium (Faceted)
Culet		Pointed
Polish		EXCELLENT
Symmetry		EXCELLENT
Fluorescence		NONE
Inscription(s)		LARGROWN IGI LG820265891
Comments:	As Grown - No indication of post-growth treatment. This Laboratory Grown Diamond was created using High Temperature (HPHT) growth process. Type II	

As Grown - No Indication of post-growth treatment.
This Laboratory Grown Diamond was created by High Pressure High Temperature (HPHT) growth process.
Type II