



**ELECTRONIC COPY**

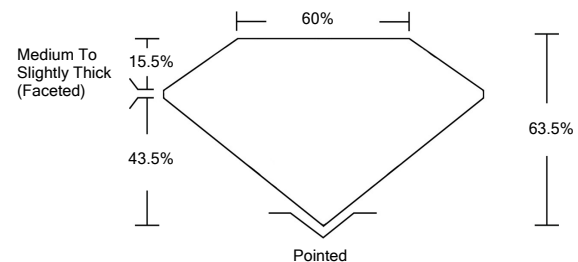
**LABORATORY GROWN DIAMOND REPORT**

|                                       |                                     |
|---------------------------------------|-------------------------------------|
| March 16, 2022                        |                                     |
| IGI Report Number                     | <b>LG520290528</b>                  |
| Description                           | <b>LABORATORY GROWN<br/>DIAMOND</b> |
| Shape and Cutting Style               | <b>OVAL BRILLIANT</b>               |
| Measurements                          | <b>11.35 X 8.13 X 5.16 MM</b>       |
| <b>GRADING RESULTS</b>                |                                     |
| Carat Weight                          | <b>3.01 CARATS</b>                  |
| Color Grade                           | <b>H</b>                            |
| Clarity Grade                         | <b>VVS 1</b>                        |
| <b>ADDITIONAL GRADING INFORMATION</b> |                                     |
| Polish                                | <b>EXCELLENT</b>                    |
| Symmetry                              | <b>EXCELLENT</b>                    |
| Fluorescence                          | <b>NONE</b>                         |
| Inscription(s)                        | <b>LABGROWN IGI LG520290528</b>     |

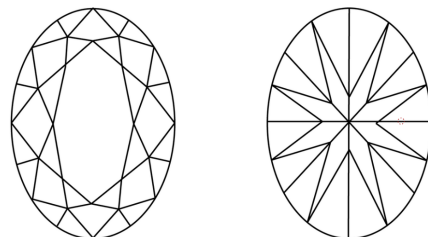
Comments: Faint Blue  
As Grown - No indication of post-growth treatment.  
This Laboratory Grown Diamond was created by High Pressure High Temperature (HPHT) growth process.  
Type II

LG520290528

**PROPORTIONS**



**CLARITY CHARACTERISTICS**

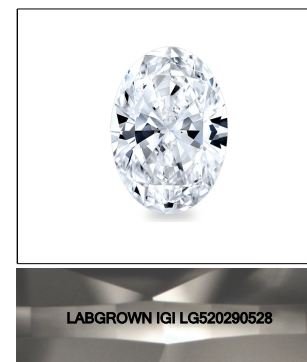


**KEY TO SYMBOLS**

Red symbols indicate internal characteristics.  
Green symbols indicate external characteristics.

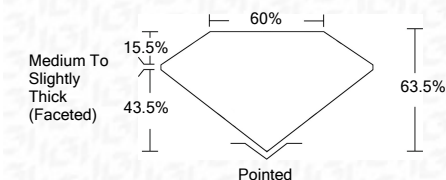
**GRADING SCALES**

|                             |                              |                             |                        |                   |           |   |
|-----------------------------|------------------------------|-----------------------------|------------------------|-------------------|-----------|---|
| COLOR GRADING SCALE         | CL                           | NC                          | FT                     | VL                | LT        |   |
|                             | COLORLESS D-F                | NEAR COLORLESS G-J          | FAINT K-M              | VERY LIGHT N-R    | LIGHT S-Z |   |
| CLARITY (10x) GRADING SCALE | FL                           | IF                          | VVS                    | VS                | SI        | I |
|                             | FLAWLESS INTERNALLY FLAWLESS | VERY VERY SLIGHTLY INCLUDED | VERY SLIGHTLY INCLUDED | SLIGHTLY INCLUDED | INCLUDED  |   |



**LASERSCRIBE<sup>SM</sup>**  
Sample Image Used

|                         |                                     |
|-------------------------|-------------------------------------|
| March 16, 2022          |                                     |
| IGI Report Number       | <b>LG520290528</b>                  |
| Description             | <b>LABORATORY GROWN<br/>DIAMOND</b> |
| Shape and Cutting Style | <b>OVAL BRILLIANT</b>               |
| Measurements            | <b>11.35 X 8.13 X 5.16 MM</b>       |
| <b>GRADING RESULTS</b>  |                                     |
| Carat Weight            | <b>3.01 CARATS</b>                  |
| Color Grade             | <b>H</b>                            |
| Clarity Grade           | <b>VVS 1</b>                        |



|                                       |                                 |
|---------------------------------------|---------------------------------|
| <b>ADDITIONAL GRADING INFORMATION</b> |                                 |
| Polish                                | <b>EXCELLENT</b>                |
| Symmetry                              | <b>EXCELLENT</b>                |
| Fluorescence                          | <b>NONE</b>                     |
| Inscription(s)                        | <b>LABGROWN IGI LG520290528</b> |

Comments: Faint Blue  
As Grown - No indication of post-growth treatment.  
This Laboratory Grown Diamond was created by High Pressure High Temperature (HPHT) growth process.  
Type II



|   |   |
|---|---|
| March 16, 2022  |   |
| IGI Report No. LG520290528  |   |
| <b>OVAL BRILLIANT</b>   |   |
| <b>11.35 X 8.13 X 5.16 MM</b>   |   |
| Carat Weight  | <b>3.01 CARATS</b>                        |
| Color Grade   | <b>H</b>                                  |
| Clarity Grade   | <b>VVS 1</b>                              |
| Depth   | <b>63.5%</b>                              |
| Table   | <b>15.5%</b>                              |
| Girdle  | <b>Medium To Slightly Thick (Faceted)</b> |
| Culet   | <b>Pointed</b>                            |
| Polish  | <b>EXCELLENT</b>                          |
| Symmetry  | <b>EXCELLENT</b>                          |
| Fluorescence  | <b>NONE</b>                               |
| Inscription(s)  | <b>LABGROWN IGI LG520290528</b>           |
| Comments:   |   |
| <b>Faint Blue</b>   |   |
| <b>As Grown - No indication of post-growth treatment.</b>   |   |
| <b>This Laboratory Grown Diamond was created by High Pressure High Temperature (HPHT) growth process.</b> |   |
| <b>Type II</b>  |   |