



# INTERNATIONAL GEMOLOGICAL INSTITUTE

## ELECTRONIC COPY LABORATORY GROWN DIAMOND REPORT

LG520291002

### LABORATORY GROWN DIAMOND REPORT

#### IGI LABORATORY GROWN DIAMOND IDENTIFICATION REPORT

March 20, 2022  
IGI Report Number LG520291002  
Description LABORATORY GROWN DIAMOND  
Shape and Cutting Style ROUND BRILLIANT  
Measurements 6.30 - 6.35 X 3.88 MM

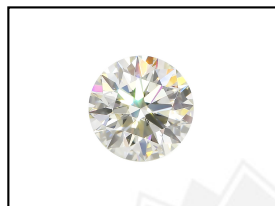
#### GRADING RESULTS

Carat Weight 0.95 CARAT  
Color Grade D  
Clarity Grade VS 2  
Cut Grade IDEAL

#### ADDITIONAL GRADING INFORMATION

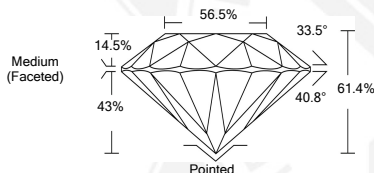
Polish EXCELLENT  
Symmetry EXCELLENT  
Fluorescence NONE  
Inscription(s) LABGROWN IGI LG520291002

Comments: As Grown - No indication of post-growth treatment.  
This Laboratory Grown Diamond was created by High Pressure High Temperature (HPHT) growth process.  
Type II



LABGROWN IGI LG520291002

LASERSCRIBE<sup>SM</sup>  
Sample Images Used



#### IGI LABORATORY GROWN DIAMOND ID REPORT

March 20, 2022  
IGI Report Number LG520291002  
**ROUND BRILLIANT**  
**6.30 - 6.35 X 3.88 MM**  
Carat Weight 0.95 CARAT  
Color Grade D  
Clarity Grade VS 2  
Cut Grade IDEAL  
Polish EXCELLENT  
Symmetry EXCELLENT  
Fluorescence NONE  
Inscription(s) LABGROWN IGI LG520291002

Comments: As Grown - No indication of post-growth treatment.  
This Laboratory Grown Diamond was created by High Pressure High Temperature (HPHT) growth process.  
Type II

#### IGI LABORATORY GROWN DIAMOND ID REPORT

March 20, 2022  
IGI Report Number LG520291002  
**ROUND BRILLIANT**  
**6.30 - 6.35 X 3.88 MM**  
Carat Weight 0.95 CARAT  
Color Grade D  
Clarity Grade VS 2  
Cut Grade IDEAL  
Polish EXCELLENT  
Symmetry EXCELLENT  
Fluorescence NONE  
Inscription(s) LABGROWN IGI LG520291002

Comments: As Grown - No indication of post-growth treatment.  
This Laboratory Grown Diamond was created by High Pressure High Temperature (HPHT) growth process.  
Type II



THIS DOCUMENT WAS PRODUCED WITH THE FOLLOWING SECURITY MEASURES: SPECIAL DOCUMENT PAPER, INK SCREENS, WATERMARK, BACKGROUND DESIGN, HOLOGRAM AND OTHER SECURITY FEATURES NOT LISTED AND DO EXCEED DOCUMENT SECURITY INDUSTRY GUIDELINES.

For Terms & Conditions and to verify this report, please visit [www.igi.org](http://www.igi.org)