

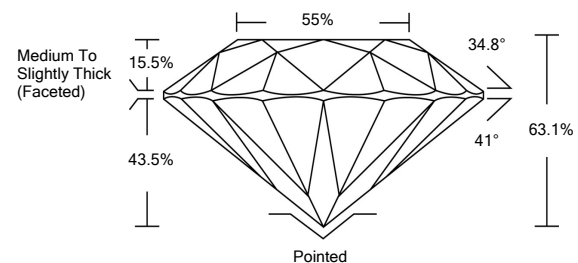


ELECTRONIC COPY

LABORATORY GROWN DIAMOND REPORT

LG520292302

PROPORTIONS



GRADING SCALES

COLOR GRADING SCALE	CL	NC	FT	VLT	LT	
	COLORLESS D-F	NEAR COLORLESS G-J	FAINT K-M	VERY LIGHT N-R	LIGHT S-Z	
CLARITY (10x) GRADING SCALE	FL	IF	VVS	VS	SI	I
	FLAWLESS INTERNALLY FLAWLESS	VERY VERY SLIGHTLY INCLUDED	VERY SLIGHTLY INCLUDED	SLIGHTLY INCLUDED	INCLUDED	

March 29, 2022

IGI Report Number

LG520292302

Description

**LABORATORY GROWN
DIAMOND**

Shape and Cutting Style

ROUND BRILLIANT

Measurements

7.81 - 7.86 X 4.94 MM

GRADING RESULTS

Carat Weight

1.87 CARAT

Color Grade

G

Clarity Grade

VS 1

Cut Grade

EXCELLENT

March 29, 2022

IGI Report Number

LG520292302

Description

**LABORATORY GROWN
DIAMOND**

Shape and Cutting Style

ROUND BRILLIANT

Measurements

7.81 - 7.86 X 4.94 MM

GRADING RESULTS

Carat Weight

1.87 CARAT

Color Grade

G

Clarity Grade

VS 1

Cut Grade

EXCELLENT

ADDITIONAL GRADING INFORMATION

Polish

EXCELLENT

Symmetry

EXCELLENT

Fluorescence

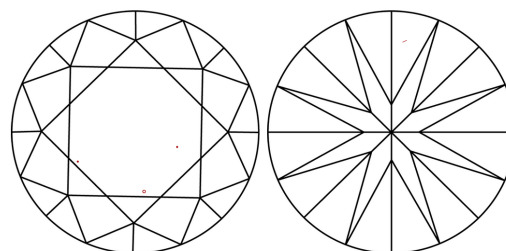
NONE

Inscription(s)

LABGROWN IGI LG520292302

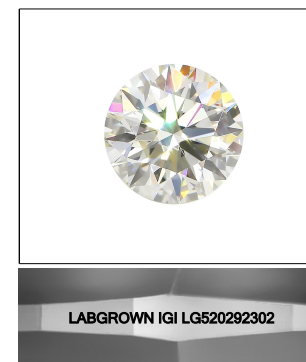
Comments: This Laboratory Grown Diamond was created by Chemical Vapor Deposition (CVD) growth process and may include post-growth treatment.
Type IIa

CLARITY CHARACTERISTICS



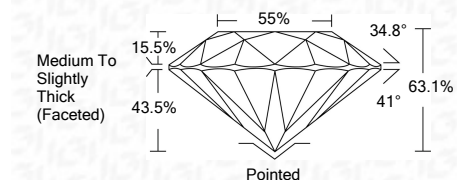
KEY TO SYMBOLS

Red symbols indicate internal characteristics.
Green symbols indicate external characteristics.



LASERSCRIBESM

Sample Image Used



ADDITIONAL GRADING INFORMATION

Polish

EXCELLENT

Symmetry

EXCELLENT

Fluorescence

NONE

Inscription(s)

LABGROWN IGI LG520292302

Comments: This Laboratory Grown Diamond was created by Chemical Vapor Deposition (CVD) growth process and may include post-growth treatment.
Type IIa



IGI

IGI Report No. LG520292302	1.87 CARAT	G	VS 1	EXCELLENT	55%	Medium To Slightly Thick (Faceted)	Pointed
ROUND BRILLIANT	7.81 - 7.86 X 4.94 MM	EXCELLENT	63.1%	EXCELLENT	41°	EXCELLENT	EXCELLENT
Color Grade	Clarity Grade	Cut Grade	Depth	Table	Girdle	Inscriptions(s)	Comments: This Laboratory Grown Diamond was created by Chemical Vapor Deposition (CVD) growth process and may include post-growth treatment. Type IIa