



ELECTRONIC COPY

LABORATORY GROWN DIAMOND REPORT

April 18, 2022
IGI Report Number LG520294495
Description LABORATORY GROWN DIAMOND
Shape and Cutting Style ROUND BRILLIANT
Measurements 6.87 - 6.91 X 4.24 MM

GRADING RESULTS

Carat Weight 1.23 CARAT
Color Grade I
Clarity Grade VVS 2
Cut Grade IDEAL

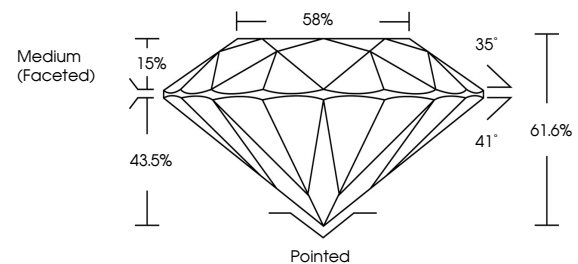
ADDITIONAL GRADING INFORMATION

Polish VERY GOOD
Symmetry EXCELLENT
Fluorescence NONE
Inscription(s) LABGROWN IGI LG520294495

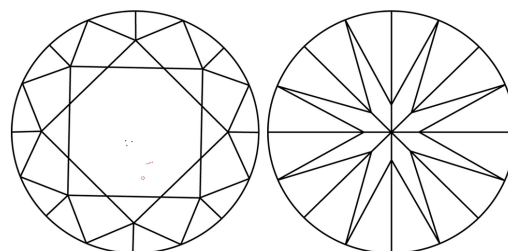
Comments: This Laboratory Grown Diamond was created by Chemical Vapor Deposition (CVD) growth process and may include post-growth treatment. Type IIa

LG520294495

PROPORTIONS



CLARITY CHARACTERISTICS



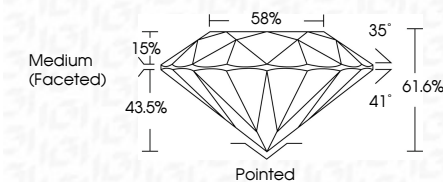
KEY TO SYMBOLS

Red symbols indicate internal characteristics.
Green symbols indicate external characteristics.

GRADING SCALES

Table showing Color Grading Scale (CL to LT) and Clarity (10x) Grading Scale (FL to I).

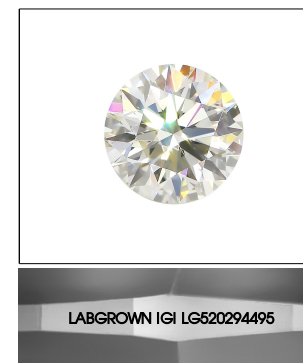
April 18, 2022
IGI Report Number LG520294495
Description LABORATORY GROWN DIAMOND
Shape and Cutting Style ROUND BRILLIANT
Measurements 6.87 - 6.91 X 4.24 MM
GRADING RESULTS
Carat Weight 1.23 CARAT
Color Grade I
Clarity Grade VVS 2
Cut Grade IDEAL



ADDITIONAL GRADING INFORMATION

Polish VERY GOOD
Symmetry EXCELLENT
Fluorescence NONE
Inscription(s) LABGROWN IGI LG520294495

Comments: This Laboratory Grown Diamond was created by Chemical Vapor Deposition (CVD) growth process and may include post-growth treatment. Type IIa



LASERSCRIBE SM
Sample Image Used



April 18, 2022
IGI Report No. LG520294495
ROUND BRILLIANT
6.87 - 6.91 X 4.24 MM
Carat Weight 1.23 CARAT
Color Grade I
Clarity Grade VVS 2
Cut Grade IDEAL
Depth 61.6%
Table 58%
Girdle Medium (Faceted)
Culet Pointed
Polish VERY GOOD
Symmetry EXCELLENT
Fluorescence NONE
Inscription(s) LABGROWN IGI LG520294495
Comments: This Laboratory Grown Diamond was created by Chemical Vapor Deposition (CVD) growth process and may include post-growth treatment. Type IIa