

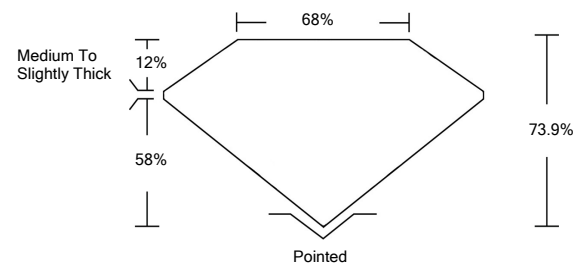


**ELECTRONIC COPY**

**LABORATORY GROWN DIAMOND REPORT**

LG522223470

**PROPORTIONS**



**GRADING SCALES**

COLOR GRADING SCALE	CL	NC	FT	VLT	LT	
	COLORLESS D-F	NEAR COLORLESS G-J	FAINT K-M	VERY LIGHT N-R	LIGHT S-Z	
CLARITY (10x) GRADING SCALE	FL	IF	VVS	VS	SI	I
	FLAWLESS INTERNALLY FLAWLESS	VERY VERY SLIGHTLY INCLUDED	VERY SLIGHTLY INCLUDED	SLIGHTLY INCLUDED	INCLUDED	

March 25, 2022

IGI Report Number

**LG522223470**

Description

**LABORATORY GROWN  
DIAMOND**

Shape and Cutting Style

**CUT CORNERED  
RECTANGULAR MODIFIED  
BRILLIANT**

Measurements

**6.84 X 5.01 X 3.70 MM**

**GRADING RESULTS**

Carat Weight

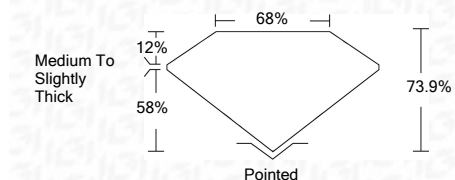
**1.11 CARAT**

Color Grade

**G**

Clarity Grade

**VVS 2**



**ADDITIONAL GRADING INFORMATION**

Polish

**VERY GOOD**

Symmetry

**EXCELLENT**

Fluorescence

**NONE**

Inscription(s)

**LABGROWN IGI LG522223470**

Comments: Faint Blue

As Grown - No indication of post-growth treatment.  
This Laboratory Grown Diamond was created by High Pressure High Temperature (HPHT) growth process.  
Type II

March 25, 2022

IGI Report Number

**LG522223470**

Description

**LABORATORY GROWN  
DIAMOND**

Shape and Cutting Style

**CUT CORNERED  
RECTANGULAR MODIFIED  
BRILLIANT**

Measurements

**6.84 X 5.01 X 3.70 MM**

**GRADING RESULTS**

Carat Weight

**1.11 CARAT**

Color Grade

**G**

Clarity Grade

**VVS 2**

**ADDITIONAL GRADING INFORMATION**

Polish

**VERY GOOD**

Symmetry

**EXCELLENT**

Fluorescence

**NONE**

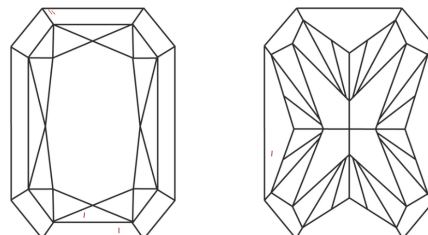
Inscription(s)

**LABGROWN IGI LG522223470**

Comments: Faint Blue

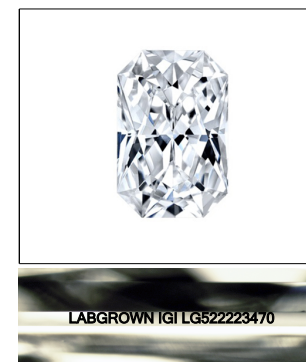
As Grown - No indication of post-growth treatment.  
This Laboratory Grown Diamond was created by High Pressure High Temperature (HPHT) growth process.  
Type II

**CLARITY CHARACTERISTICS**



**KEY TO SYMBOLS**

Red symbols indicate internal characteristics.  
Green symbols indicate external characteristics.



**LASERSCRIBE<sup>SM</sup>**  
Sample Image Used



**IGI**

March 25, 2022  
IGI Report No. LG522223470  
**CUT CORNERED RECT. MODIFIED  
BRILLIANT**  
6.84 X 5.01 X 3.70 MM  
1.11 CARAT  
Color Grade **G**  
Clarity Grade **VVS 2**  
Depth **73.9%**  
Table **68%**  
Girdle **Medium To Slightly Thick**  
Culet **Pointed**  
Polish **VERY GOOD**  
Symmetry **EXCELLENT**  
Fluorescence **NONE**  
Inscription(s) **LABGROWN IGI  
LG522223470**  
Comments:  
**Faint Blue**  
As Grown - No indication of post-growth  
treatment.  
This Laboratory Grown Diamond was created  
by High Pressure High Temperature (HPHT)  
growth process.  
Type II