



**INTERNATIONAL
GEMOLOGICAL
INSTITUTE**

LABORATORY GROWN DIAMOND REPORT

IGI LABORATORY GROWN DIAMOND IDENTIFICATION REPORT

April 8, 2022
 IGI Report Number LG522227668
 Description LABORATORY GROWN DIAMOND
 Shape and Cutting Style CUSHION BRILLIANT
 Measurements 5.29 X 3.61 X 2.25 MM

GRADING RESULTS

Carat Weight 0.34 CARAT
 Color Grade FANCY VIVID PINK
 Clarity Grade SI 1

ADDITIONAL GRADING INFORMATION

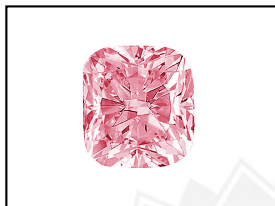
Polish EXCELLENT
 Symmetry VERY GOOD
 Fluorescence SLIGHT
 Inscription(s) LABGROWN IGI LG522227668

Comments: This Laboratory Grown Diamond was created by High Pressure High Temperature (HPHT) growth process.
 Indications of post-growth treatment.

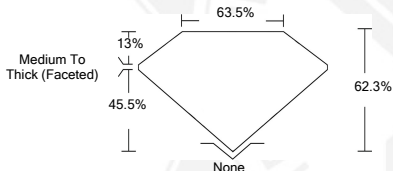
ELECTRONIC COPY

**LABORATORY GROWN
DIAMOND REPORT**

LG522227668



LASERSCRIBESM
Sample Images Used



**IGI LABORATORY GROWN
DIAMOND ID REPORT**

April 8, 2022
 IGI Report Number **LG522227668**
CUSHION BRILLIANT
5.29 X 3.61 X 2.25 MM
 Carat Weight 0.34 CARAT
 Color Grade FANCY VIVID PINK
 Clarity Grade SI 1
 Polish EXCELLENT
 Symmetry VERY GOOD
 Fluorescence SLIGHT
 Inscription(s) LABGROWN IGI
 LG522227668

Comments: This Laboratory Grown Diamond was created by High Pressure High Temperature (HPHT) growth process.
 Indications of post-growth treatment.

**IGI LABORATORY GROWN
DIAMOND ID REPORT**

April 8, 2022
 IGI Report Number **LG522227668**
CUSHION BRILLIANT
5.29 X 3.61 X 2.25 MM
 Carat Weight 0.34 CARAT
 Color Grade FANCY VIVID PINK
 Clarity Grade SI 1
 Polish EXCELLENT
 Symmetry VERY GOOD
 Fluorescence SLIGHT
 Inscription(s) LABGROWN IGI
 LG522227668

Comments: This Laboratory Grown Diamond was created by High Pressure High Temperature (HPHT) growth process.
 Indications of post-growth treatment.

THIS DOCUMENT WAS PRODUCED WITH THE FOLLOWING SECURITY MEASURES: SPECIAL DOCUMENT PAPER, INK SCREENS, WATERMARK, BACKGROUND DESIGN, HOLOGRAM AND OTHER SECURITY FEATURES NOT LISTED AND DO EXCEED DOCUMENT SECURITY INDUSTRY GUIDELINES.

For Terms & Conditions and to verify this report, please visit www.igi.org