



ELECTRONIC COPY

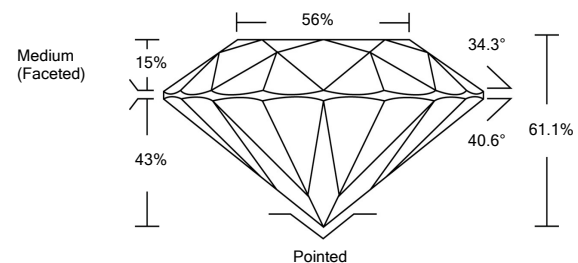
LABORATORY GROWN DIAMOND REPORT

| | |
|---------------------------------------|-------------------------------------|
| March 26, 2022 | |
| IGI Report Number | LG522232492 |
| Description | LABORATORY GROWN DIAMOND |
| Shape and Cutting Style | ROUND BRILLIANT |
| Measurements | 6.85 - 6.89 X 4.19 MM |
| GRADING RESULTS | |
| Carat Weight | 1.21 CARAT |
| Color Grade | D |
| Clarity Grade | VS 2 |
| Cut Grade | IDEAL |
| ADDITIONAL GRADING INFORMATION | |
| Polish | EXCELLENT |
| Symmetry | EXCELLENT |
| Fluorescence | NONE |
| Inscription(s) | LABGROWN IGI LG522232492 |

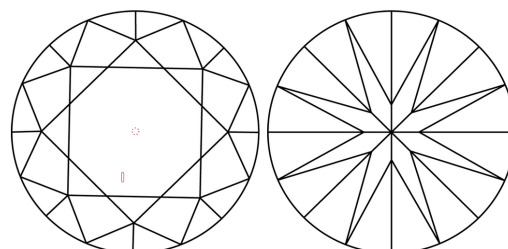
Comments: HEARTS & ARROWS
As Grown - No indication of post-growth treatment.
This Laboratory Grown Diamond was created by High Pressure High Temperature (HPHT) growth process.
Type II

LG522232492

PROPORTIONS

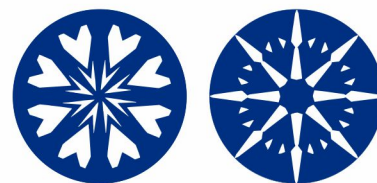


CLARITY CHARACTERISTICS



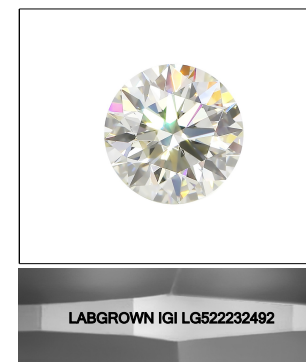
KEY TO SYMBOLS

Red symbols indicate internal characteristics.
Green symbols indicate external characteristics.



GRADING SCALES

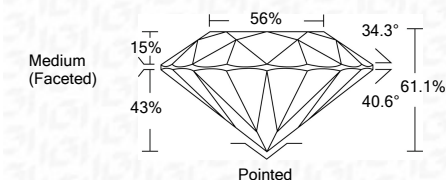
| | | | | | | |
|-----------------------------|------------------------------|-----------------------------|------------------------|-------------------|-----------|---|
| COLOR GRADING SCALE | CL | NC | FT | VL | LT | |
| | COLORLESS D-F | NEAR COLORLESS G-J | FAINT K-M | VERY LIGHT N-R | LIGHT S-Z | |
| CLARITY (10x) GRADING SCALE | FL | IF | VVS | VS | SI | I |
| | FLAWLESS INTERNALLY FLAWLESS | VERY VERY SLIGHTLY INCLUDED | VERY SLIGHTLY INCLUDED | SLIGHTLY INCLUDED | INCLUDED | |



LASERSCRIBESM

Sample Image Used

| | |
|-------------------------|-------------------------------------|
| March 26, 2022 | |
| IGI Report Number | LG522232492 |
| Description | LABORATORY GROWN DIAMOND |
| Shape and Cutting Style | ROUND BRILLIANT |
| Measurements | 6.85 - 6.89 X 4.19 MM |
| GRADING RESULTS | |
| Carat Weight | 1.21 CARAT |
| Color Grade | D |
| Clarity Grade | VS 2 |
| Cut Grade | IDEAL |



| | |
|---------------------------------------|---------------------------------|
| ADDITIONAL GRADING INFORMATION | |
| Polish | EXCELLENT |
| Symmetry | EXCELLENT |
| Fluorescence | NONE |
| Inscription(s) | LABGROWN IGI LG522232492 |

Comments: HEARTS & ARROWS
As Grown - No indication of post-growth treatment.
This Laboratory Grown Diamond was created by High Pressure High Temperature (HPHT) growth process.
Type II



IGI



| | |
|--|---------------------------------|
| IGI Report No. LG522232492 | |
| ROUND BRILLIANT | |
| 6.85 - 6.89 X 4.19 MM | |
| Carat Weight | 1.21 CARAT |
| Color Grade | D |
| Clarity Grade | VS 2 |
| Cut Grade | IDEAL |
| Depth | 61.1% |
| Table | 56% |
| Girdle | Medium (Faceted) |
| Culet | Pointed |
| Polish | EXCELLENT |
| Symmetry | EXCELLENT |
| Fluorescence | NONE |
| Inscription(s) | LABGROWN IGI LG522232492 |
| Comments: HEARTS & ARROWS | |
| As Grown - No indication of post-growth treatment. | |
| This Laboratory Grown Diamond was created by High Pressure High Temperature (HPHT) growth process. | |
| Type II | |