

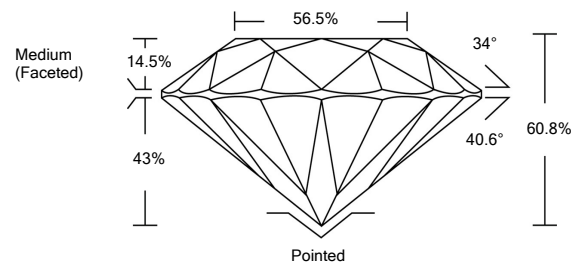


**ELECTRONIC COPY**

**LABORATORY GROWN DIAMOND REPORT**

LG522232657

**PROPORTIONS**



**GRADING SCALES**

COLOR GRADING SCALE	CL	NC	FT	VLT	LT	
	COLORLESS D-F	NEAR COLORLESS G-J	FAINT K-M	VERY LIGHT N-R	LIGHT S-Z	
CLARITY (10x) GRADING SCALE	FL	IF	VVS	VS	SI	I
	FLAWLESS INTERNALLY FLAWLESS	VERY VERY SLIGHTLY INCLUDED	VERY SLIGHTLY INCLUDED	SLIGHTLY INCLUDED	INCLUDED	

March 26, 2022

IGI Report Number

**LG522232657**

Description

**LABORATORY GROWN  
DIAMOND**

Shape and Cutting Style

**ROUND BRILLIANT**

Measurements

**7.10 - 7.12 X 4.32 MM**

**GRADING RESULTS**

Carat Weight

**1.33 CARAT**

Color Grade

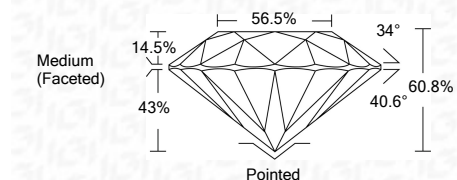
**D**

Clarity Grade

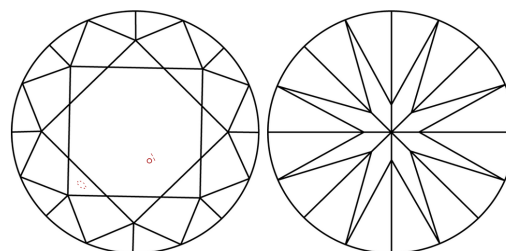
**VS 2**

Cut Grade

**IDEAL**

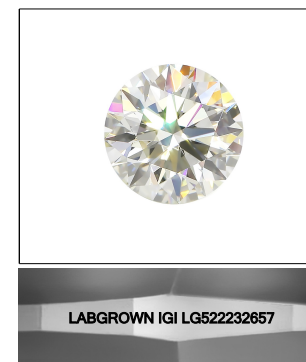
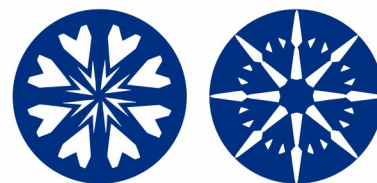


**CLARITY CHARACTERISTICS**



**KEY TO SYMBOLS**

Red symbols indicate internal characteristics.  
Green symbols indicate external characteristics.



LABGROWN IGI LG522232657

**LASERSCRIBE<sup>SM</sup>**

Sample Image Used

**ADDITIONAL GRADING INFORMATION**

Polish

**EXCELLENT**

Symmetry

**EXCELLENT**

Fluorescence

**NONE**

Inscription(s)

**LABGROWN IGI LG522232657**

Comments: HEARTS & ARROWS

As Grown - No indication of post-growth treatment.  
This Laboratory Grown Diamond was created by High Pressure High Temperature (HPHT) growth process.  
Type II



**IGI**

March 26, 2022  
IGI Report No. LG522232657  
**ROUND BRILLIANT**

**7.10 - 7.12 X 4.32 MM**  
Carat Weight

**1.33 CARAT**

Color Grade

**D**

Clarity Grade

**VS 2**

Cut Grade

**IDEAL**

Depth

**60.8%**

Table

**56.5%**

Girdle

**Medium (Faceted)**

Culet

**Pointed**

Polish

**EXCELLENT**

Symmetry

**EXCELLENT**

Fluorescence

**NONE**

Inscription(s)

**LABGROWN IGI LG522232657**

**HEARTS & ARROWS**

As Grown - No indication of post-growth treatment.

This Laboratory Grown Diamond was created by High Pressure High Temperature (HPHT) growth process.

Type II