

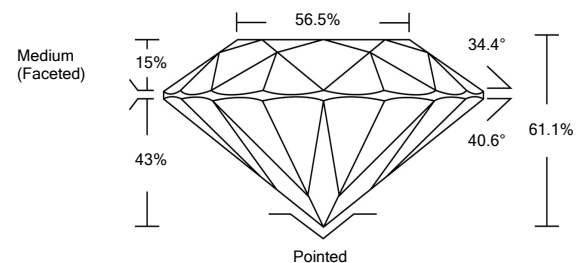


ELECTRONIC COPY

LABORATORY GROWN DIAMOND REPORT

LG522232659

PROPORTIONS



GRADING SCALES

COLOR GRADING SCALE	CL	NC	FT	VL	LT	
	COLORLESS D-F	NEAR COLORLESS G-J	FAINT K-M	VERY LIGHT N-R	LIGHT S-Z	
CLARITY (10x) GRADING SCALE	FL	IF	VVS	VS	SI	I
	FLAWLESS INTERNALLY FLAWLESS	VERY VERY SLIGHTLY INCLUDED	VERY SLIGHTLY INCLUDED	SLIGHTLY INCLUDED	INCLUDED	

March 26, 2022

IGI Report Number

LG522232659

Description

**LABORATORY GROWN
DIAMOND**

Shape and Cutting Style

ROUND BRILLIANT

Measurements

7.70 - 7.72 X 4.71 MM

GRADING RESULTS

Carat Weight

1.71 CARAT

Color Grade

D

Clarity Grade

SI 1

Cut Grade

IDEAL

March 26, 2022

IGI Report Number

LG522232659

Description

**LABORATORY GROWN
DIAMOND**

Shape and Cutting Style

ROUND BRILLIANT

Measurements

7.70 - 7.72 X 4.71 MM

GRADING RESULTS

Carat Weight

1.71 CARAT

Color Grade

D

Clarity Grade

SI 1

Cut Grade

IDEAL

ADDITIONAL GRADING INFORMATION

Polish

EXCELLENT

Symmetry

EXCELLENT

Fluorescence

NONE

Inscription(s)

LABGROWN IGI LG522232659

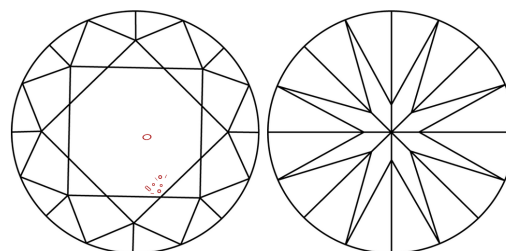
Comments: HEARTS & ARROWS

As Grown - No indication of post-growth treatment.

This Laboratory Grown Diamond was created by High Pressure High Temperature (HPHT) growth process.

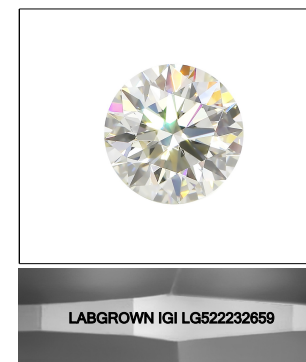
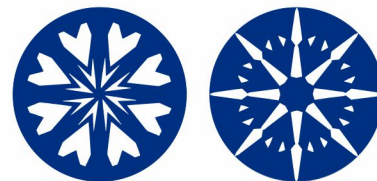
Type II

CLARITY CHARACTERISTICS



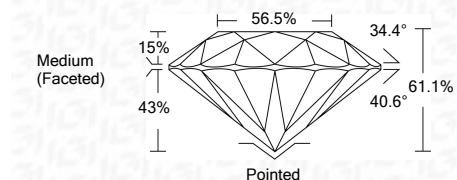
KEY TO SYMBOLS

Red symbols indicate internal characteristics.
Green symbols indicate external characteristics.



LASERSCRIBESM

Sample Image Used



ADDITIONAL GRADING INFORMATION

Polish

EXCELLENT

Symmetry

EXCELLENT

Fluorescence

NONE

Inscription(s)

LABGROWN IGI LG522232659

Comments: HEARTS & ARROWS

As Grown - No indication of post-growth treatment.

This Laboratory Grown Diamond was created by High Pressure High Temperature (HPHT) growth process.

Type II



IGI



IGI Report No. LG522232659	1.71 CARAT	D
ROUND BRILLIANT	SI 1	IDEAL
7.70 - 7.72 X 4.71 MM	61.1%	56.5%
Carat Weight	Medium (Faceted)	
Color Grade	Pointed	
Clarity Grade	EXCELLENT	
Cut Grade	EXCELLENT	
Depth	NONE	
Table	LABGROWN IGI	
Girdle	Inscriptions(s)	
Culet		
Polish		
Symmetry		
Fluorescence		
Inscriptions(s)		

Comments: HEARTS & ARROWS
As Grown - No indication of post-growth treatment.
This Laboratory Grown Diamond was created by High Pressure High Temperature (HPHT) growth process.
Type II