

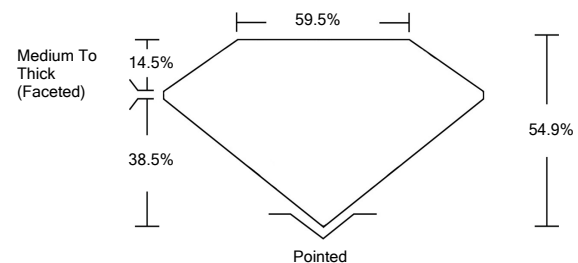


ELECTRONIC COPY

LABORATORY GROWN DIAMOND REPORT

LG522233229

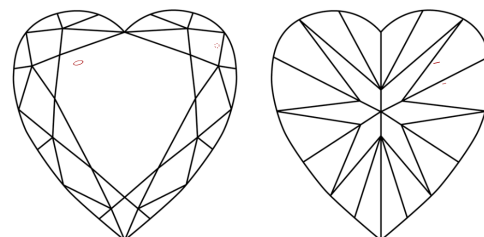
PROPORTIONS



GRADING SCALES

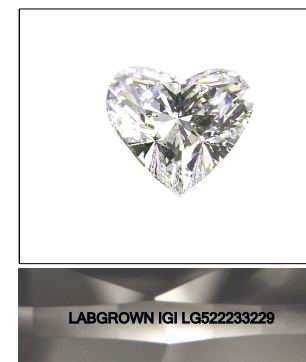
COLOR GRADING SCALE	CL	NC	FT	VL	LT	
	COLORLESS D-F	NEAR COLORLESS G-J	FAINT K-M	VERY LIGHT N-R	LIGHT S-Z	
CLARITY (10x) GRADING SCALE	FL	IF	VVS	VS	SI	I
	FLAWLESS INTERNALLY FLAWLESS	VERY VERY SLIGHTLY INCLUDED	VERY SLIGHTLY INCLUDED	SLIGHTLY INCLUDED	INCLUDED	

CLARITY CHARACTERISTICS



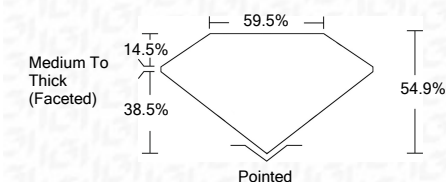
KEY TO SYMBOLS

Red symbols indicate internal characteristics.
Green symbols indicate external characteristics.



LASERSCRIBESM
Sample Image Used

April 2, 2022	IGI Report Number	LG522233229
Description	LABORATORY GROWN DIAMOND	
Shape and Cutting Style	HEART BRILLIANT	
Measurements	7.60 X 8.44 X 4.63 MM	
GRADING RESULTS		
Carat Weight	1.70 CARAT	
Color Grade	G	
Clarity Grade	SI 1	



ADDITIONAL GRADING INFORMATION		
Polish	EXCELLENT	
Symmetry	VERY GOOD	
Fluorescence	NONE	
Inscription(s)	LABGROWN IGI LG522233229	

Comments: This Laboratory Grown Diamond was created by Chemical Vapor Deposition (CVD) growth process and may include post-growth treatment.
Type IIa

April 2, 2022	IGI Report Number	LG522233229
Description	LABORATORY GROWN DIAMOND	
Shape and Cutting Style	HEART BRILLIANT	
Measurements	7.60 X 8.44 X 4.63 MM	
GRADING RESULTS		
Carat Weight	1.70 CARAT	
Color Grade	G	
Clarity Grade	SI 1	
ADDITIONAL GRADING INFORMATION		
Polish	EXCELLENT	
Symmetry	VERY GOOD	
Fluorescence	NONE	
Inscription(s)	LABGROWN IGI LG522233229	

Comments: This Laboratory Grown Diamond was created by Chemical Vapor Deposition (CVD) growth process and may include post-growth treatment.
Type IIa



IGI

April 2, 2022	IGI Report No. LG522233229	HEART BRILLIANT	7.60 X 8.44 X 4.63 MM	1.70 CARAT	G	SI 1	54.9%	38.5%	59.5%	Medium To Thick (Faceted)	Pointed	EXCELLENT	VERY GOOD	NONE	LABGROWN IGI LG522233229
Color Grade		Clarity Grade		Depth	Table	Girdle	Culet	Polish	Symmetry	Fluorescence	Inscription(s)	Comments:			
This Laboratory Grown Diamond was created by Chemical Vapor Deposition (CVD) growth process and may include post-growth treatment. Type IIa															