

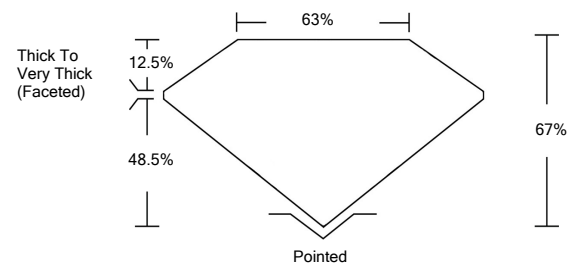


ELECTRONIC COPY

LABORATORY GROWN DIAMOND REPORT

LG522239699

PROPORTIONS



GRADING SCALES

COLOR GRADING SCALE	CL	NC	FT	VL	LT	
	COLORLESS D-F	NEAR COLORLESS G-J	FAINT K-M	VERY LIGHT N-R	LIGHT S-Z	
CLARITY (10x) GRADING SCALE	FL	IF	VVS	VS	SI	I
	FLAWLESS INTERNALLY FLAWLESS	VERY VERY SLIGHTLY INCLUDED	VERY SLIGHTLY INCLUDED	SLIGHTLY INCLUDED	INCLUDED	INCLUDED

April 4, 2022	
IGI Report Number	LG522239699
Description	LABORATORY GROWN DIAMOND
Shape and Cutting Style	CUSHION BRILLIANT
Measurements	8.58 X 8.01 X 5.37 MM

GRADING RESULTS

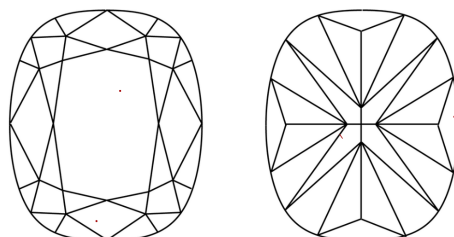
Carat Weight	3.00 CARATS
Color Grade	G
Clarity Grade	VS 1

ADDITIONAL GRADING INFORMATION

Polish	EXCELLENT
Symmetry	EXCELLENT
Fluorescence	NONE
Inscription(s)	LABGROWN IGI LG522239699

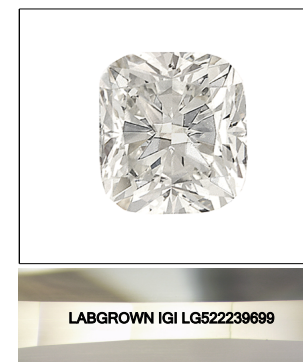
Comments: This Laboratory Grown Diamond was created by Chemical Vapor Deposition (CVD) growth process and may include post-growth treatment.
Type IIa

CLARITY CHARACTERISTICS



KEY TO SYMBOLS

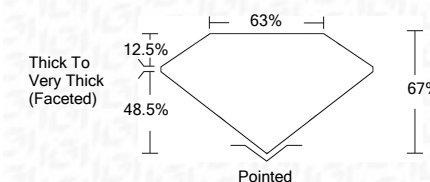
Red symbols indicate internal characteristics.
Green symbols indicate external characteristics.



LASERSCRIBESM

Sample Image Used

April 4, 2022	
IGI Report Number	LG522239699
Description	LABORATORY GROWN DIAMOND
Shape and Cutting Style	CUSHION BRILLIANT
Measurements	8.58 X 8.01 X 5.37 MM
GRADING RESULTS	
Carat Weight	3.00 CARATS
Color Grade	G
Clarity Grade	VS 1



ADDITIONAL GRADING INFORMATION

Polish	EXCELLENT
Symmetry	EXCELLENT
Fluorescence	NONE
Inscription(s)	LABGROWN IGI LG522239699

Comments: This Laboratory Grown Diamond was created by Chemical Vapor Deposition (CVD) growth process and may include post-growth treatment.
Type IIa



IGI



April 4, 2022	
IGI Report No. LG522239699	
CUSHION BRILLIANT	
8.58 X 8.01 X 5.37 MM	
Carat Weight	3.00 CARATS
Color Grade	G
Clarity Grade	VS 1
Depth	67%
Table	63%
Girdle	Thick To Very Thick (Faceted)
Culet	Pointed
Polish	EXCELLENT
Symmetry	EXCELLENT
Fluorescence	NONE
Inscription(s)	LABGROWN IGI LG522239699
Comments:	This Laboratory Grown Diamond was created by Chemical Vapor Deposition (CVD) growth process and may include post-growth treatment. Type IIa