



**INTERNATIONAL  
GEMOLOGICAL  
INSTITUTE**

**ELECTRONIC COPY**

**LABORATORY GROWN  
DIAMOND REPORT**

**LG522242045**

**IGI LABORATORY GROWN  
DIAMOND ID REPORT**

04/08/2022

IGI Report Number **LG522242045**

**PEAR BRILLIANT**

**7.78 X 4.83 X 3.07 MM**

Carat Weight	0.68 CARAT
Color Grade	FANCY VIVID PINK
Clarity Grade	VVS 1
Polish	VERY GOOD
Symmetry	VERY GOOD
Fluorescence	SLIGHT
Inscription(s)	LABGROWN IGI LG522242045

Comments: This Laboratory Grown Diamond was created by Chemical Vapor Deposition (CVD) growth process.  
Indications of post-growth treatment.

**IGI LABORATORY GROWN  
DIAMOND ID REPORT**

04/08/2022

IGI Report Number **LG522242045**

**PEAR BRILLIANT**

**7.78 X 4.83 X 3.07 MM**

Carat Weight	0.68 CARAT
Color Grade	FANCY VIVID PINK
Clarity Grade	VVS 1
Polish	VERY GOOD
Symmetry	VERY GOOD
Fluorescence	SLIGHT
Inscription(s)	LABGROWN IGI LG522242045

Comments: This Laboratory Grown Diamond was created by Chemical Vapor Deposition (CVD) growth process.  
Indications of post-growth treatment.

**LABORATORY GROWN DIAMOND REPORT**

**IGI LABORATORY GROWN DIAMOND IDENTIFICATION REPORT**

04/08/2022

IGI Report Number **LG522242045**

Shape and Cutting Style **PEAR BRILLIANT**

Measurements **7.78 X 4.83 X 3.07 MM**

**GRADING RESULTS**

Carat Weight **0.68 CARAT**

Color Grade **FANCY VIVID PINK**

Clarity Grade **VVS 1**

**ADDITIONAL GRADING INFORMATION**

Polish **VERY GOOD**

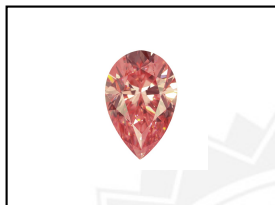
Symmetry **VERY GOOD**

Fluorescence **SLIGHT**

Inscription(s) **LABGROWN IGI LG522242045**

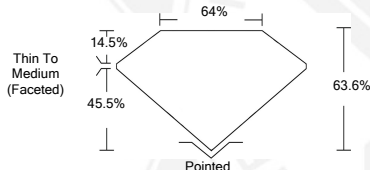
Comments: This Laboratory Grown Diamond was created by Chemical Vapor Deposition (CVD) growth process.

Indications of post-growth treatment.



**LASERSCRIBE<sup>SM</sup>**

Sample Image Used



This Laboratory Grown Diamond (LGD) described in this Report has been analyzed, graded and Laserscribed® by International Gemological Institute (IGI). A LGD has essentially the chemical, physical and optical properties as a mined diamond, with the exception of being man-made (a manufactured product). LGDs are typically produced by CVD (chemical vapor deposition) or by HPHT (high pressure high temperature) growth processes and may include post growth modifications to change the color. IGI utilizes the most advanced techniques and equipment currently available including, binocular microscopes, diamond color masters, non-contact-optical measuring device, a wide range analytical techniques including FTIR, UV-VIS-NIR, raman spectroscopy, and fluorescence analysis at various excitation wavelengths. This Report includes advanced security features. This Report is neither a guarantee, valuation nor appraisal and by making the report IGI does not agree to purchase or replace the article.

INTERNATIONAL GEMOLOGICAL INSTITUTE, INC

THIS DOCUMENT WAS PRODUCED WITH THE FOLLOWING SECURITY MEASURES: SPECIAL DOCUMENT PAPER, INK SCREENS, WATERMARK, BACKGROUND DESIGNS, HOLOGRAM AND OTHER SECURITY FEATURES NOT LISTED AND DO EXCEED DOCUMENT SECURITY INDUSTRY GUIDELINES.

For Terms & Conditions and to verify this report, please visit [www.igi.org](http://www.igi.org)