



ELECTRONIC COPY

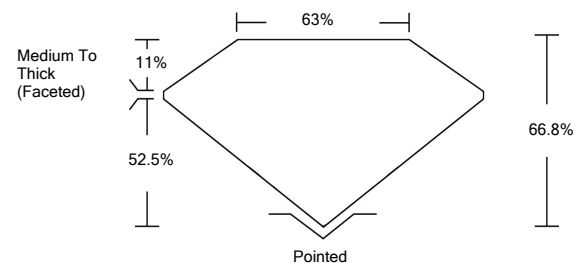
LABORATORY GROWN DIAMOND REPORT

April 6, 2022	
IGI Report Number	LG522252059
Description	LABORATORY GROWN DIAMOND
Shape and Cutting Style	SQUARE CUSHION BRILLIANT
Measurements	8.22 X 7.85 X 5.24 MM
GRADING RESULTS	
Carat Weight	2.50 CARATS
Color Grade	H
Clarity Grade	VS 1
ADDITIONAL GRADING INFORMATION	
Polish	EXCELLENT
Symmetry	EXCELLENT
Fluorescence	NONE
Inscription(s)	LABGROWN IGI LG522252059

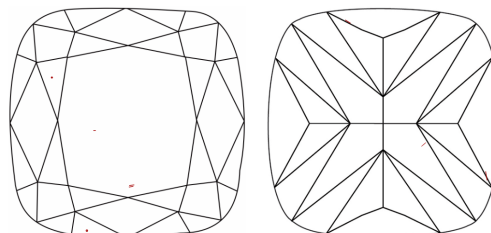
Comments: This Laboratory Grown Diamond was created by Chemical Vapor Deposition (CVD) growth process and may include post-growth treatment.
Type IIa

LG522252059

PROPORTIONS



CLARITY CHARACTERISTICS

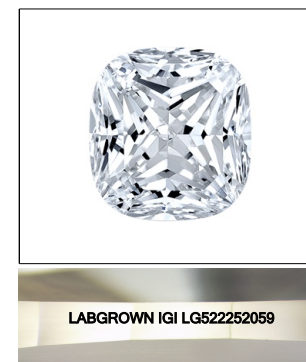


KEY TO SYMBOLS

Red symbols indicate internal characteristics.
Green symbols indicate external characteristics.

GRADING SCALES

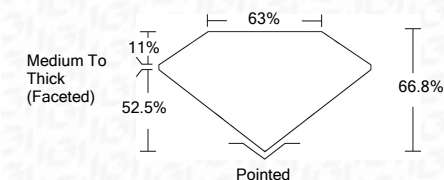
COLOR GRADING SCALE	CL	NC	FT	VL	LT	
	COLORLESS D-F	NEAR COLORLESS G-J	FAINT K-M	VERY LIGHT N-R	LIGHT S-Z	
CLARITY (10x) GRADING SCALE	FL	IF	VVS	VS	SI	I
	FLAWLESS INTERNALLY FLAWLESS	VERY VERY SLIGHTLY INCLUDED	VERY SLIGHTLY INCLUDED	SLIGHTLY INCLUDED	INCLUDED	INCLUDED



LASERSCRIBESM

Sample Image Used

April 6, 2022	
IGI Report Number	LG522252059
Description	LABORATORY GROWN DIAMOND
Shape and Cutting Style	SQUARE CUSHION BRILLIANT
Measurements	8.22 X 7.85 X 5.24 MM
GRADING RESULTS	
Carat Weight	2.50 CARATS
Color Grade	H
Clarity Grade	VS 1



ADDITIONAL GRADING INFORMATION	
Polish	EXCELLENT
Symmetry	EXCELLENT
Fluorescence	NONE
Inscription(s)	LABGROWN IGI LG522252059

Comments: This Laboratory Grown Diamond was created by Chemical Vapor Deposition (CVD) growth process and may include post-growth treatment.
Type IIa



April 6, 2022	IGI Report No. LG522252059	2.50 CARATS	H	VS 1	66.8%	63%	Medium To Thick (Faceted)	Pointed	EXCELLENT	EXCELLENT	NONE	LABGROWN IGI LG522252059
SQUARE CUSHION BRILLIANT		Carat Weight	Color Grade	Clarity Grade	Depth	Table	Girdle	Culet	Polish	Symmetry	Fluorescence	Inscription(s)

This Laboratory Grown Diamond was created by Chemical Vapor Deposition (CVD) growth process and may include post-growth treatment.
Type IIa