



**ELECTRONIC COPY**

**LABORATORY GROWN DIAMOND REPORT**

May 25, 2022  
 IGI Report Number **LG522261633**  
 Description **LABORATORY GROWN  
DIAMOND**  
 Shape and Cutting Style **ROUND BRILLIANT**  
 Measurements **6.51 - 6.55 X 3.95 MM**

**GRADING RESULTS**

Carat Weight **1.01 CARAT**  
 Color Grade **I**  
 Clarity Grade **SI 2**  
 Cut Grade **IDEAL**

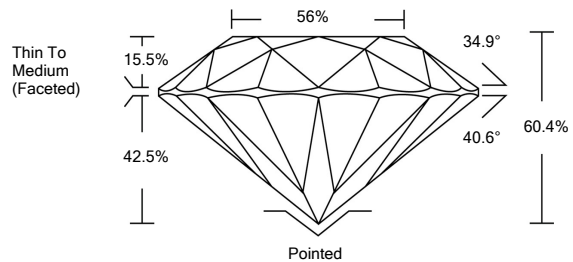
**ADDITIONAL GRADING INFORMATION**

Polish **EXCELLENT**  
 Symmetry **EXCELLENT**  
 Fluorescence **NONE**

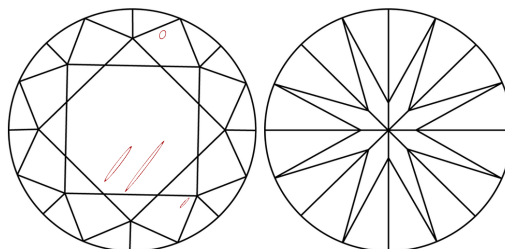
Inscription(s) **LABGROWN IGI LG522261633**  
 Comments: As Grown - No indication of post-growth treatment.  
 This Laboratory Grown Diamond was created by High Pressure High Temperature (HPHT) growth process.  
 Type II  
 Faint Blue

LG522261633

**PROPORTIONS**



**CLARITY CHARACTERISTICS**



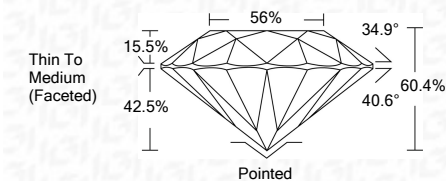
**KEY TO SYMBOLS**

Red symbols indicate internal characteristics.  
 Green symbols indicate external characteristics.

**GRADING SCALES**

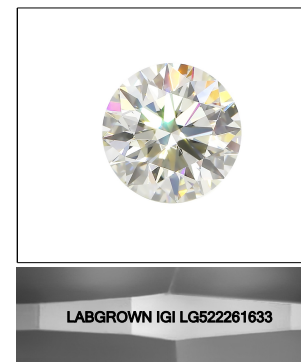
|                             |                              |                             |                        |                   |           |   |
|-----------------------------|------------------------------|-----------------------------|------------------------|-------------------|-----------|---|
| COLOR GRADING SCALE         | CL                           | NC                          | FT                     | VL                | LT        |   |
|                             | COLORLESS D-F                | NEAR COLORLESS G-J          | FAINT K-M              | VERY LIGHT N-R    | LIGHT S-Z |   |
| CLARITY (10x) GRADING SCALE | FL                           | IF                          | VVS                    | VS                | SI        | I |
|                             | FLAWLESS INTERNALLY FLAWLESS | VERY VERY SLIGHTLY INCLUDED | VERY SLIGHTLY INCLUDED | SLIGHTLY INCLUDED | INCLUDED  |   |

May 25, 2022  
 IGI Report Number **LG522261633**  
 Description **LABORATORY GROWN  
DIAMOND**  
 Shape and Cutting Style **ROUND BRILLIANT**  
 Measurements **6.51 - 6.55 X 3.95 MM**  
**GRADING RESULTS**  
 Carat Weight **1.01 CARAT**  
 Color Grade **I**  
 Clarity Grade **SI 2**  
 Cut Grade **IDEAL**



**ADDITIONAL GRADING INFORMATION**

Polish **EXCELLENT**  
 Symmetry **EXCELLENT**  
 Fluorescence **NONE**  
 Inscription(s) **LABGROWN IGI LG522261633**  
 Comments: As Grown - No indication of post-growth treatment.  
 This Laboratory Grown Diamond was created by High Pressure High Temperature (HPHT) growth process.  
 Type II  
 Faint Blue



**LASERSCRIBE<sup>SM</sup>**  
 Sample Image Used



**IGI**

May 25, 2022  
 IGI Report No. **LG522261633**  
**ROUND BRILLIANT**  
**6.51 - 6.55 X 3.95 MM**  
 Carat Weight **1.01 CARAT**  
 Color Grade **I**  
 Clarity Grade **SI 2**  
 Cut Grade **IDEAL**  
 Depth **60.4%**  
 Table **56%**  
 Girdle **Thin To Medium (Faceted)**  
 Culet **Pointed**  
 Polish **EXCELLENT**  
 Symmetry **EXCELLENT**  
 Fluorescence **NONE**  
 Inscription(s) **LABGROWN IGI LG522261633**  
 Comments: **As Grown - No indication of post-growth treatment.**  
**This Laboratory Grown Diamond was created by High Pressure High Temperature (HPHT) growth process.**  
**Type II**  
**Faint Blue**