

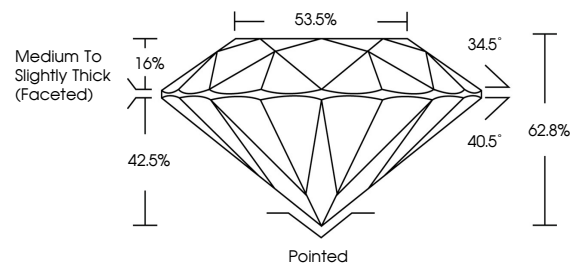


ELECTRONIC COPY

LABORATORY GROWN DIAMOND REPORT

LG523265275

PROPORTIONS



GRADING SCALES

COLOR GRADING SCALE	CL	NC	FT	VLT	LT	
	COLORLESS D-F	NEAR COLORLESS G-J	FAINT K-M	VERY LIGHT N-R	LIGHT S-Z	
CLARITY (10x) GRADING SCALE	FL	IF	VVS	VS	SI	I
	FLAWLESS INTERNALLY FLAWLESS	VERY VERY SLIGHTLY INCLUDED	VERY SLIGHTLY INCLUDED	SLIGHTLY INCLUDED	INCLUDED	

April 7, 2022

IGI Report Number

LG523265275

Description

LABORATORY GROWN DIAMOND

Shape and Cutting Style

ROUND BRILLIANT

Measurements

7.74 - 7.79 X 4.87 MM

GRADING RESULTS

Carat Weight

1.81 CARAT

Color Grade

G

Clarity Grade

VS 1

Cut Grade

EXCELLENT

April 7, 2022

IGI Report Number

LG523265275

Description

LABORATORY GROWN DIAMOND

Shape and Cutting Style

ROUND BRILLIANT

Measurements

7.74 - 7.79 X 4.87 MM

GRADING RESULTS

Carat Weight

1.81 CARAT

Color Grade

G

Clarity Grade

VS 1

Cut Grade

EXCELLENT

ADDITIONAL GRADING INFORMATION

Polish

EXCELLENT

Symmetry

EXCELLENT

Fluorescence

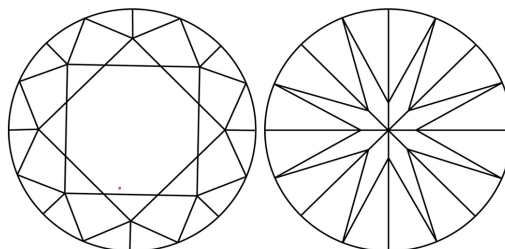
NONE

Inscription(s)

LABGROWN (LGI) LG523265275

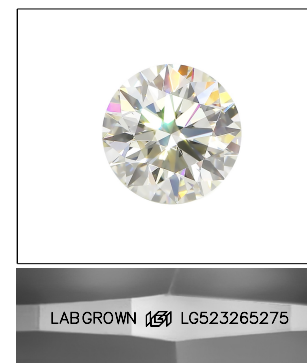
Comments: This Laboratory Grown Diamond was created by Chemical Vapor Deposition (CVD) growth process and may include post-growth treatment. Type IIa

CLARITY CHARACTERISTICS



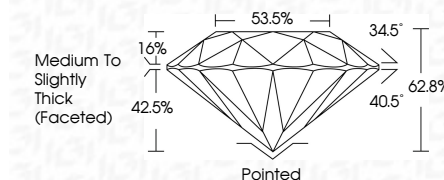
KEY TO SYMBOLS

Red symbols indicate internal characteristics. Green symbols indicate external characteristics.



LASERSCRIBE SM

Sample Image Used



ADDITIONAL GRADING INFORMATION

Polish

EXCELLENT

Symmetry

EXCELLENT

Fluorescence

NONE

Inscription(s)

LABGROWN (LGI) LG523265275

Comments: This Laboratory Grown Diamond was created by Chemical Vapor Deposition (CVD) growth process and may include post-growth treatment. Type IIa



IGI



IGI Report No. LG523265275	1.81 CARAT
ROUND BRILLIANT	G
7.74 - 7.79 X 4.87 MM	EXCELLENT
Carat Weight	62.8%
Color Grade	53.5%
Clarity Grade	Medium To Slightly Thick (Faceted)
Cut Grade	Pointed
Depth	EXCELLENT
Table	EXCELLENT
Grade	NONE
Culet	LABGROWN (LGI) LG523265275
Polish	
Symmetry	
Fluorescence	
Inscription(s)	

Comments: This Laboratory Grown Diamond was created by Chemical Vapor Deposition (CVD) growth process and may include post-growth treatment. Type IIa