

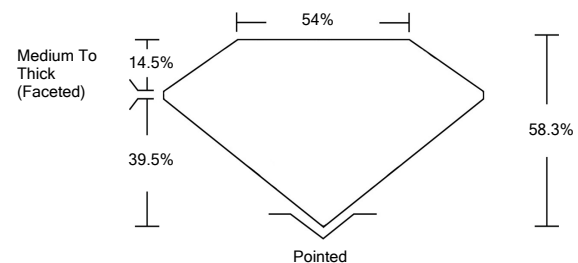


ELECTRONIC COPY

LABORATORY GROWN DIAMOND REPORT

LG523265425

PROPORTIONS



GRADING SCALES

COLOR GRADING SCALE	CL	NC	FT	VLT	LT	
	COLORLESS D-F	NEAR COLORLESS G-J	FAINT K-M	VERY LIGHT N-R	LIGHT S-Z	
CLARITY (10x) GRADING SCALE	FL	IF	VVS	VS	SI	I
	FLAWLESS INTERNALLY FLAWLESS	VERY VERY SLIGHTLY INCLUDED	VERY SLIGHTLY INCLUDED	SLIGHTLY INCLUDED	INCLUDED	

April 23, 2022

IGI Report Number

LG523265425

Description

LABORATORY GROWN DIAMOND

Shape and Cutting Style

HEART BRILLIANT

Measurements

7.22 X 8.57 X 5.00 MM

GRADING RESULTS

Carat Weight

1.80 CARAT

Color Grade

I

Clarity Grade

VS 1

April 23, 2022

IGI Report Number

LG523265425

Description

LABORATORY GROWN DIAMOND

Shape and Cutting Style

HEART BRILLIANT

Measurements

7.22 X 8.57 X 5.00 MM

GRADING RESULTS

Carat Weight

1.80 CARAT

Color Grade

I

Clarity Grade

VS 1

ADDITIONAL GRADING INFORMATION

Polish

EXCELLENT

Symmetry

EXCELLENT

Fluorescence

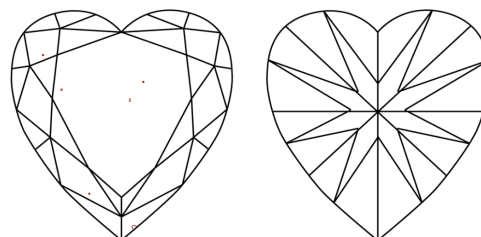
NONE

Inscription(s)

LABGROWN IGI LG523265425

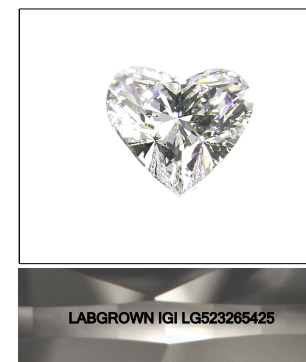
Comments: This Laboratory Grown Diamond was created by Chemical Vapor Deposition (CVD) growth process and may include post-growth treatment.
Type IIa

CLARITY CHARACTERISTICS



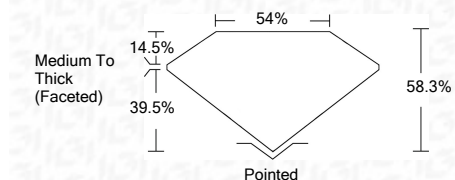
KEY TO SYMBOLS

Red symbols indicate internal characteristics.
Green symbols indicate external characteristics.



LASERSCRIBESM

Sample Image Used



ADDITIONAL GRADING INFORMATION

Polish

EXCELLENT

Symmetry

EXCELLENT

Fluorescence

NONE

Inscription(s)

LABGROWN IGI LG523265425

Comments: This Laboratory Grown Diamond was created by Chemical Vapor Deposition (CVD) growth process and may include post-growth treatment.
Type IIa



IGI



April 23, 2022	IGI Report No. LG523265425	1.80 CARAT	I	Pointed
HEART BRILLIANT	7.22 X 8.57 X 5.00 MM	58.3%	VS 1	EXCELLENT
Carat Weight	Color Grade	Depth	Table	Symmetry
		54%	39.5%	EXCELLENT
		Medium To Thick (Faceted)		NONE
				LABGROWN IGI LG523265425
				Comments: This Laboratory Grown Diamond was created by Chemical Vapor Deposition (CVD) growth process and may include post-growth treatment. Type IIa