

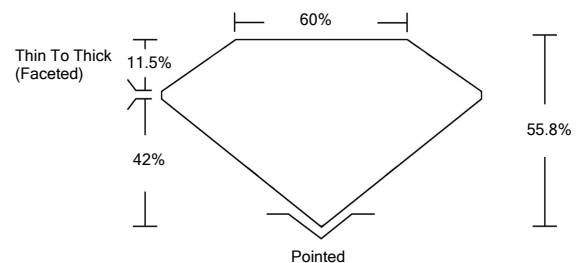


**ELECTRONIC COPY**

**LABORATORY GROWN DIAMOND REPORT**

LG523265505

**PROPORTIONS**



**GRADING SCALES**

COLOR GRADING SCALE	CL	NC	FT	VL	LT	
	COLORLESS D-F	NEAR COLORLESS G-J	FAINT K-M	VERY LIGHT N-R	LIGHT S-Z	
CLARITY (10x) GRADING SCALE	FL	IF	VVS	VS	SI	I
	FLAWLESS INTERNALLY FLAWLESS	VERY VERY SLIGHTLY INCLUDED	VERY SLIGHTLY INCLUDED	SLIGHTLY INCLUDED	INCLUDED	

April 6, 2022

IGI Report Number

**LG523265505**

Description

**LABORATORY GROWN DIAMOND**

Shape and Cutting Style

**HEART BRILLIANT**

Measurements

**7.42 X 8.03 X 4.48 MM**

**GRADING RESULTS**

Carat Weight

**1.50 CARAT**

Color Grade

**G**

Clarity Grade

**SI 1**

April 6, 2022

IGI Report Number

**LG523265505**

Description

**LABORATORY GROWN DIAMOND**

Shape and Cutting Style

**HEART BRILLIANT**

Measurements

**7.42 X 8.03 X 4.48 MM**

**GRADING RESULTS**

Carat Weight

**1.50 CARAT**

Color Grade

**G**

Clarity Grade

**SI 1**

**ADDITIONAL GRADING INFORMATION**

Polish

**EXCELLENT**

Symmetry

**EXCELLENT**

Fluorescence

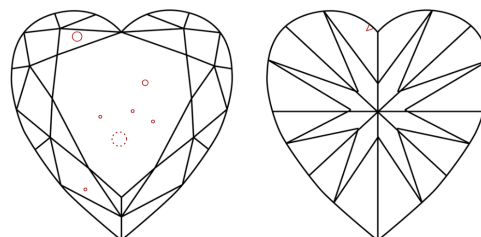
**NONE**

Inscription(s)

**LABGROWN IGI LG523265505**

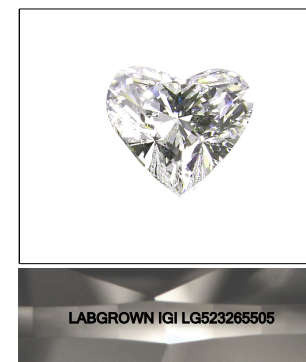
Comments: This Laboratory Grown Diamond was created by Chemical Vapor Deposition (CVD) growth process and may include post-growth treatment.  
Type IIa

**CLARITY CHARACTERISTICS**



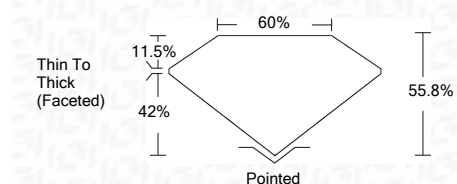
**KEY TO SYMBOLS**

Red symbols indicate internal characteristics.  
Green symbols indicate external characteristics.



**LASERSCRIBE<sup>SM</sup>**

Sample Image Used



**ADDITIONAL GRADING INFORMATION**

Polish

**EXCELLENT**

Symmetry

**EXCELLENT**

Fluorescence

**NONE**

Inscription(s)

**LABGROWN IGI LG523265505**

Comments: This Laboratory Grown Diamond was created by Chemical Vapor Deposition (CVD) growth process and may include post-growth treatment.  
Type IIa



**IGI**



April 6, 2022	IGI Report No. LG523265505	HEART BRILLIANT	7.42 X 8.03 X 4.48 MM	1.50 CARAT	G	SI 1	55.8%	60%	Pointed	EXCELLENT	EXCELLENT	NONE	LABGROWN IGI LG523265505	Comments: This Laboratory Grown Diamond was created by Chemical Vapor Deposition (CVD) growth process and may include post-growth treatment. Type IIa
									Thin To Thick (Faceted)					