



ELECTRONIC COPY

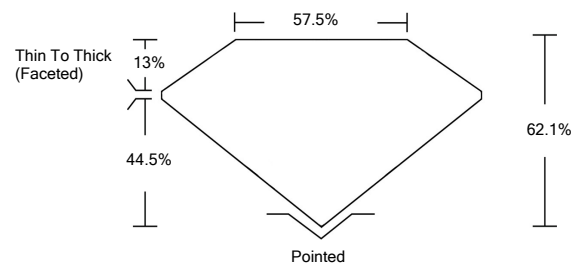
LABORATORY GROWN DIAMOND REPORT

April 6, 2022	
IGI Report Number	LG523265534
Description	LABORATORY GROWN DIAMOND
Shape and Cutting Style	HEART BRILLIANT
Measurements	6.97 X 8.42 X 5.23 MM
GRADING RESULTS	
Carat Weight	1.81 CARAT
Color Grade	G
Clarity Grade	VS 2
ADDITIONAL GRADING INFORMATION	
Polish	EXCELLENT
Symmetry	EXCELLENT
Fluorescence	NONE
Inscription(s)	LABGROWN IGI LG523265534

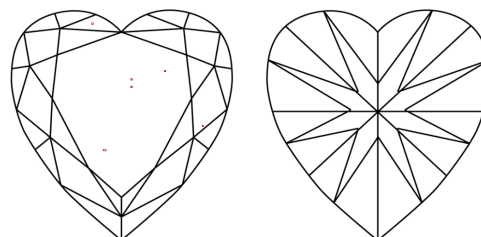
Comments: This Laboratory Grown Diamond was created by Chemical Vapor Deposition (CVD) growth process and may include post-growth treatment.
Type IIa

LG523265534

PROPORTIONS



CLARITY CHARACTERISTICS

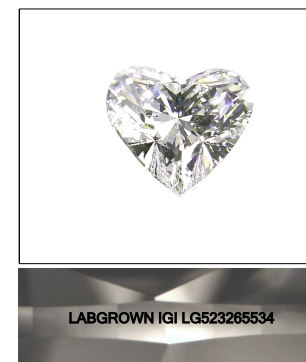


KEY TO SYMBOLS

Red symbols indicate internal characteristics.
Green symbols indicate external characteristics.

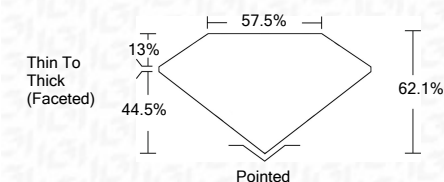
GRADING SCALES

COLOR GRADING SCALE	CL	NC	FT	VLT	LT	
	COLORLESS D-F	NEAR COLORLESS G-J	FAINT K-M	VERY LIGHT N-R	LIGHT S-Z	
CLARITY (10x) GRADING SCALE	FL	IF	VVS	VS	SI	I
	FLAWLESS INTERNALLY FLAWLESS	VERY VERY SLIGHTLY INCLUDED	VERY SLIGHTLY INCLUDED	SLIGHTLY INCLUDED	INCLUDED	



LASERSCRIBESM
Sample Image Used

April 6, 2022	
IGI Report Number	LG523265534
Description	LABORATORY GROWN DIAMOND
Shape and Cutting Style	HEART BRILLIANT
Measurements	6.97 X 8.42 X 5.23 MM
GRADING RESULTS	
Carat Weight	1.81 CARAT
Color Grade	G
Clarity Grade	VS 2



ADDITIONAL GRADING INFORMATION	
Polish	EXCELLENT
Symmetry	EXCELLENT
Fluorescence	NONE
Inscription(s)	LABGROWN IGI LG523265534

Comments: This Laboratory Grown Diamond was created by Chemical Vapor Deposition (CVD) growth process and may include post-growth treatment.
Type IIa



IGI

April 6, 2022	
IGI Report No. LG523265534	
HEART BRILLIANT	
6.97 X 8.42 X 5.23 MM	
Carat Weight	1.81 CARAT
Color Grade	G
Clarity Grade	VS 2
Depth	62.1%
Table	57.5%
Grade	Thin To Thick (Faceted)
Culet	Pointed
Polish	EXCELLENT
Symmetry	EXCELLENT
Fluorescence	NONE
Inscription(s)	LABGROWN IGI LG523265534
Comments:	This Laboratory Grown Diamond was created by Chemical Vapor Deposition (CVD) growth process and may include post-growth treatment. Type IIa