



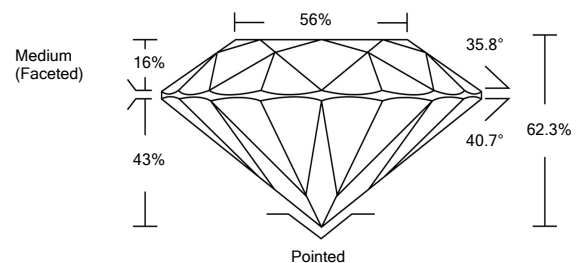
**ELECTRONIC COPY**

LG523273542

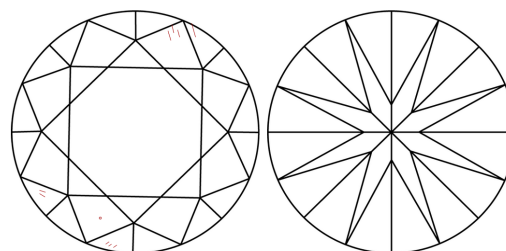
**GRADING SCALES**

COLOR GRADING SCALE	CL	NC	FT	VL	LT	
	COLORLESS D-F	NEAR COLORLESS G-J	FAINT K-M	VERY LIGHT N-R	LIGHT S-Z	
CLARITY (10x) GRADING SCALE	FL	IF	VVS	VS	SI	I
	FLAWLESS INTERNALLY FLAWLESS	VERY VERY SLIGHTLY INCLUDED	VERY SLIGHTLY INCLUDED	SLIGHTLY INCLUDED	INCLUDED	

**PROPORTIONS**

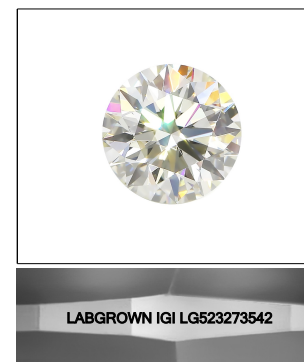


**CLARITY CHARACTERISTICS**



**KEY TO SYMBOLS**

Red symbols indicate internal characteristics.  
Green symbols indicate external characteristics.



**LASERSCRIBE<sup>SM</sup>**

Sample Image Used

April 9, 2022

IGI Report Number **LG523273542**

Description **LABORATORY GROWN DIAMOND**

Shape and Cutting Style **ROUND BRILLIANT**

Measurements **6.69 - 6.74 X 4.19 MM**

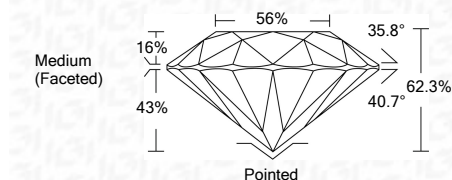
**GRADING RESULTS**

Carat Weight **1.16 CARAT**

Color Grade **D**

Clarity Grade **VVS 2**

Cut Grade **IDEAL**



**ADDITIONAL GRADING INFORMATION**

Polish **EXCELLENT**

Symmetry **EXCELLENT**

Fluorescence **NONE**

Inscription(s) **LABGROWN IGI LG523273542**

Comments: As Grown - No indication of post-growth treatment.  
This Laboratory Grown Diamond was created by High Pressure High Temperature (HPHT) growth process.  
Type II



**IGI**

April 9, 2022	IGI Report No. LG523273542	1.16 CARAT	D	Pointed
ROUND BRILLIANT	6.69 - 6.74 X 4.19 MM	VVS 2	IDEAL	EXCELLENT
Carat Weight	6.69 - 6.74 X 4.19 MM	62.3%	56%	EXCELLENT
Color Grade	D	Medium (Faceted)		NONE
Clarity Grade	VVS 2			LABGROWN IGI LG523273542
Cut Grade	IDEAL			
Depth	62.3%			
Table	56%			
Girdle	Medium (Faceted)			
Culet	Pointed			
Polish	EXCELLENT			
Symmetry	EXCELLENT			
Fluorescence	NONE			
Inscription(s)	LABGROWN IGI LG523273542			

Comments: As Grown - No indication of post-growth treatment.  
This Laboratory Grown Diamond was created by High Pressure High Temperature (HPHT) growth process.  
Type II

