



**ELECTRONIC COPY**

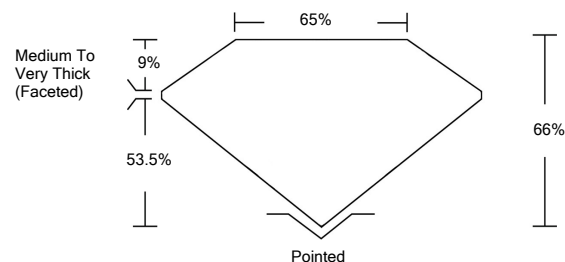
LG523274985

**LABORATORY GROWN DIAMOND REPORT**

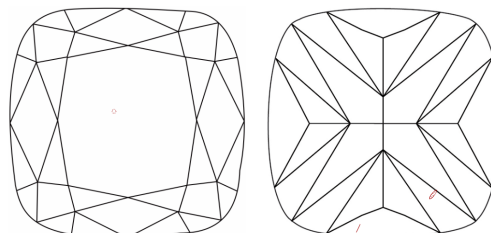
**GRADING SCALES**

|                             |                              |                             |                        |                   |           |   |
|-----------------------------|------------------------------|-----------------------------|------------------------|-------------------|-----------|---|
| COLOR GRADING SCALE         | CL                           | NC                          | FT                     | VL                | LT        |   |
|                             | COLORLESS D-F                | NEAR COLORLESS G-J          | FAINT K-M              | VERY LIGHT N-R    | LIGHT S-Z |   |
| CLARITY (10x) GRADING SCALE | FL                           | IF                          | VVS                    | VS                | SI        | I |
|                             | FLAWLESS INTERNALLY FLAWLESS | VERY VERY SLIGHTLY INCLUDED | VERY SLIGHTLY INCLUDED | SLIGHTLY INCLUDED | INCLUDED  |   |

**PROPORTIONS**

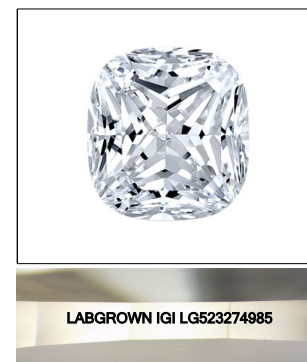


**CLARITY CHARACTERISTICS**



**KEY TO SYMBOLS**

Red symbols indicate internal characteristics.  
Green symbols indicate external characteristics.



**LASERSCRIBE<sup>SM</sup>**

Sample Image Used

April 23, 2022

IGI Report Number

**LG523274985**

Description

**LABORATORY GROWN  
DIAMOND**

Shape and Cutting Style

**SQUARE CUSHION  
BRILLIANT**

Measurements

**8.65 X 8.26 X 5.45 MM**

**GRADING RESULTS**

Carat Weight

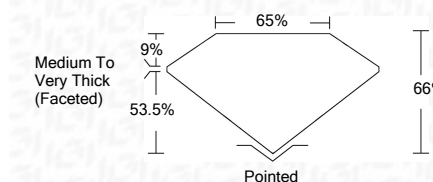
**3.00 CARATS**

Color Grade

**G**

Clarity Grade

**VS 2**



**ADDITIONAL GRADING INFORMATION**

Polish

**EXCELLENT**

Symmetry

**EXCELLENT**

Fluorescence

**NONE**

Inscription(s)

**LABGROWN IGI LG523274985**

Comments: This Laboratory Grown Diamond was created by Chemical Vapor Deposition (CVD) growth process and may include post-growth treatment.  
Type IIa

April 23, 2022

IGI Report Number

**LG523274985**

Description

**LABORATORY GROWN  
DIAMOND**

Shape and Cutting Style

**SQUARE CUSHION BRILLIANT**

Measurements

**8.65 X 8.26 X 5.45 MM**

**GRADING RESULTS**

Carat Weight

**3.00 CARATS**

Color Grade

**G**

Clarity Grade

**VS 2**

**ADDITIONAL GRADING INFORMATION**

Polish

**EXCELLENT**

Symmetry

**EXCELLENT**

Fluorescence

**NONE**

Inscription(s)

**LABGROWN IGI LG523274985**

Comments: This Laboratory Grown Diamond was created by Chemical Vapor Deposition (CVD) growth process and may include post-growth treatment.  
Type IIa



**IGI**

|                |                              |                                 |                                       |            |
|----------------|------------------------------|---------------------------------|---------------------------------------|------------|
| April 23, 2022 | IGI Report No. LG523274985   | <b>SQUARE CUSHION BRILLIANT</b> | <b>3.00 CARATS</b>                    | <b>G</b>   |
|                | <b>8.65 X 8.26 X 5.45 MM</b> |                                 | <b>VS 2</b>                           | <b>66%</b> |
|                | Carat Weight                 |                                 | <b>Medium To Very Thick (Faceted)</b> |            |
|                | Color Grade                  |                                 | <b>Pointed</b>                        |            |
|                | Clarity Grade                |                                 | <b>EXCELLENT</b>                      |            |
|                | Depth                        |                                 | <b>EXCELLENT</b>                      |            |
|                | Table                        |                                 | <b>NONE</b>                           |            |
|                | Girdle                       |                                 | <b>LABGROWN IGI LG523274985</b>       |            |
|                | Culet                        |                                 |                                       |            |
|                | Polish                       |                                 |                                       |            |
|                | Symmetry                     |                                 |                                       |            |
|                | Fluorescence                 |                                 |                                       |            |
|                | Inscription(s)               |                                 |                                       |            |
|                | Comments:                    |                                 |                                       |            |

This Laboratory Grown Diamond was created by Chemical Vapor Deposition (CVD) growth process and may include post-growth treatment.  
Type IIa