



**ELECTRONIC COPY**

LG523274989

**LABORATORY GROWN DIAMOND REPORT**

April 11, 2022  
IGI Report Number **LG523274989**  
Description **LABORATORY GROWN  
DIAMOND**  
Shape and Cutting Style **CUSHION MODIFIED  
BRILLIANT**  
Measurements **8.62 X 7.35 X 5.13 MM**

**GRADING RESULTS**

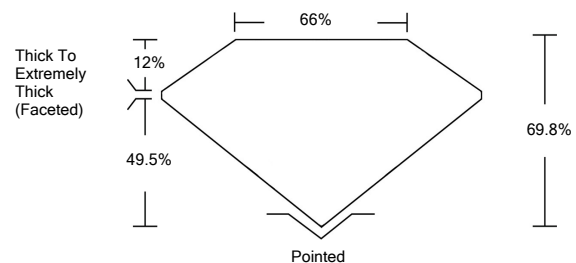
Carat Weight **3.01 CARATS**  
Color Grade **H**  
Clarity Grade **VS 1**

**ADDITIONAL GRADING INFORMATION**

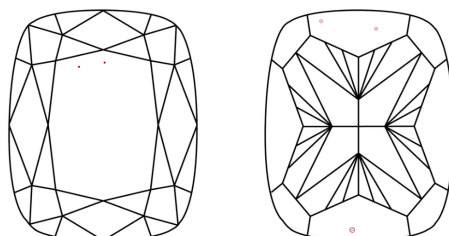
Polish **EXCELLENT**  
Symmetry **EXCELLENT**  
Fluorescence **NONE**  
Inscription(s) **LABGROWN IGI LG523274989**

Comments: This Laboratory Grown Diamond was created by Chemical Vapor Deposition (CVD) growth process and may include post-growth treatment.  
Type IIa

**PROPORTIONS**



**CLARITY CHARACTERISTICS**

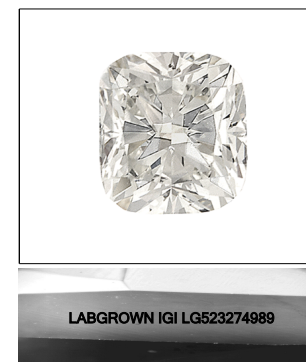


**KEY TO SYMBOLS**

Red symbols indicate internal characteristics.  
Green symbols indicate external characteristics.

**GRADING SCALES**

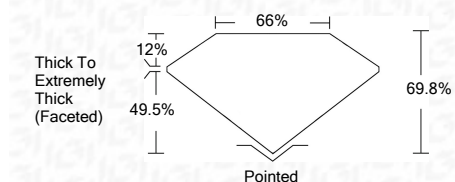
COLOR GRADING SCALE	CL	NC	FT	VL	LT	
	COLORLESS D-F	NEAR COLORLESS G-J	FAINT K-M	VERY LIGHT N-R	LIGHT S-Z	
CLARITY (10x) GRADING SCALE	FL	IF	VVS	VS	SI	I
	FLAWLESS INTERNALLY FLAWLESS	VERY VERY SLIGHTLY INCLUDED	VERY SLIGHTLY INCLUDED	SLIGHTLY INCLUDED	INCLUDED	



**LASERSCRIBE<sup>SM</sup>**

Sample Image Used

April 11, 2022  
IGI Report Number **LG523274989**  
Description **LABORATORY GROWN  
DIAMOND**  
Shape and Cutting Style **CUSHION MODIFIED  
BRILLIANT**  
Measurements **8.62 X 7.35 X 5.13 MM**  
**GRADING RESULTS**  
Carat Weight **3.01 CARATS**  
Color Grade **H**  
Clarity Grade **VS 1**



**ADDITIONAL GRADING INFORMATION**

Polish **EXCELLENT**  
Symmetry **EXCELLENT**  
Fluorescence **NONE**  
Inscription(s) **LABGROWN IGI LG523274989**

Comments: This Laboratory Grown Diamond was created by Chemical Vapor Deposition (CVD) growth process and may include post-growth treatment.  
Type IIa



**IGI**

April 11, 2022  
IGI Report No. LG523274989  
**CUSHION MODIFIED BRILLIANT**  
8.62 X 7.35 X 5.13 MM  
Carat Weight **3.01 CARATS**  
Color Grade **H**  
Clarity Grade **VS 1**  
Depth **69.8%**  
Table **66%**  
Girdle **Thick To Extremely Thick (Faceted)**  
Culet **Pointed**  
Polish **EXCELLENT**  
Symmetry **EXCELLENT**  
Fluorescence **NONE**  
Inscription(s) **LABGROWN IGI LG523274989**  
Comments: This Laboratory Grown Diamond was created by Chemical Vapor Deposition (CVD) growth process and may include post-growth treatment.  
Type IIa