

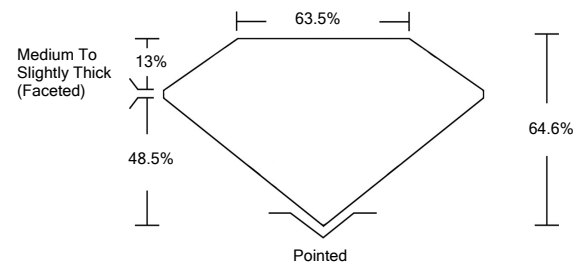


ELECTRONIC COPY

LABORATORY GROWN DIAMOND REPORT

LG523275918

PROPORTIONS



GRADING SCALES

COLOR GRADING SCALE	CL	NC	FT	VL	LT	
	COLORLESS D-F	NEAR COLORLESS G-J	FAINT K-M	VERY LIGHT N-R	LIGHT S-Z	
CLARITY (10x) GRADING SCALE	FL	IF	VVS	VS	SI	I
	FLAWLESS INTERNALLY FLAWLESS	VERY VERY SLIGHTLY INCLUDED	VERY SLIGHTLY INCLUDED	SLIGHTLY INCLUDED	INCLUDED	

April 18, 2022

IGI Report Number

LG523275918

Description

**LABORATORY GROWN
DIAMOND**

Shape and Cutting Style

**SQUARE CUSHION
BRILLIANT**

Measurements

6.87 X 6.83 X 4.41 MM

GRADING RESULTS

Carat Weight

1.57 CARAT

Color Grade

G

Clarity Grade

SI 1

April 18, 2022

IGI Report Number

LG523275918

Description

**LABORATORY GROWN
DIAMOND**

Shape and Cutting Style

SQUARE CUSHION BRILLIANT

Measurements

6.87 X 6.83 X 4.41 MM

GRADING RESULTS

Carat Weight

1.57 CARAT

Color Grade

G

Clarity Grade

SI 1

ADDITIONAL GRADING INFORMATION

Polish

EXCELLENT

Symmetry

EXCELLENT

Fluorescence

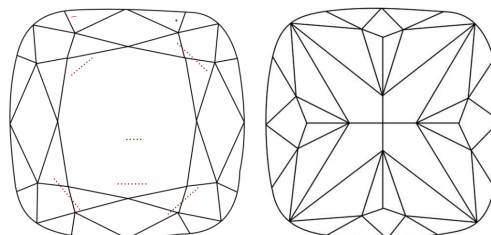
NONE

Inscription(s)

LABGROWN IGI LG523275918

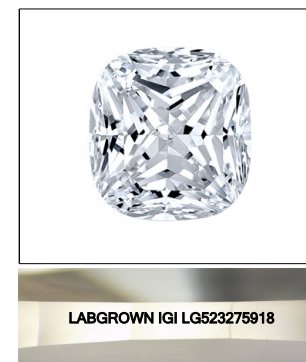
Comments: This Laboratory Grown Diamond was created by Chemical Vapor Deposition (CVD) growth process and may include post-growth treatment.
Type IIa

CLARITY CHARACTERISTICS



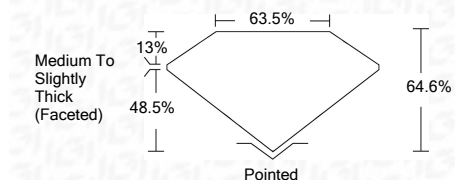
KEY TO SYMBOLS

Red symbols indicate internal characteristics.
Green symbols indicate external characteristics.



LASERSCRIBESM

Sample Image Used



ADDITIONAL GRADING INFORMATION

Polish

EXCELLENT

Symmetry

EXCELLENT

Fluorescence

NONE

Inscription(s)

LABGROWN IGI LG523275918

Comments: This Laboratory Grown Diamond was created by Chemical Vapor Deposition (CVD) growth process and may include post-growth treatment.
Type IIa



IGI



April 18, 2022	IGI Report No. LG523275918	1.57 CARAT	G	SI 1	Pointed
	SQUARE CUSHION BRILLIANT	6.87 X 6.83 X 4.41 MM	64.6%	63.5%	EXCELLENT
	Carat Weight			Medium To Slightly Thick (Faceted)	EXCELLENT
	Color Grade				NONE
	Clarity Grade				LABGROWN IGI LG523275918
	Depth				
	Table				
	Girdle				
	Culet				
	Polish				
	Symmetry				
	Fluorescence				
	Inscription(s)				
	Comments:				

This Laboratory Grown Diamond was created by Chemical Vapor Deposition (CVD) growth process and may include post-growth treatment.
Type IIa