



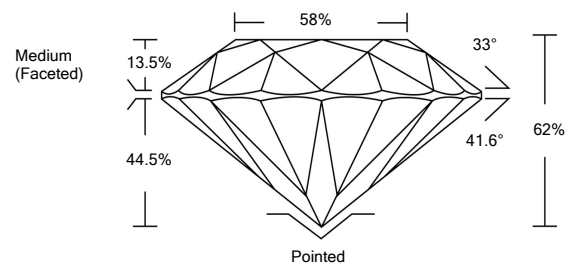
ELECTRONIC COPY

LG523278854

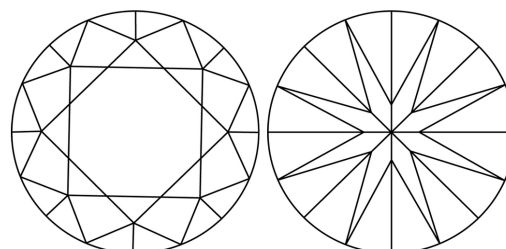
GRADING SCALES

COLOR GRADING SCALE	CL	NC	FT	VLT	LT	
	COLORLESS D-F	NEAR COLORLESS G-J	FAINT K-M	VERY LIGHT N-R	LIGHT S-Z	
CLARITY (10x) GRADING SCALE	FL	IF	VVS	VS	SI	I
	FLAWLESS INTERNALLY FLAWLESS	VERY VERY SLIGHTLY INCLUDED	VERY SLIGHTLY INCLUDED	SLIGHTLY INCLUDED	INCLUDED	

PROPORTIONS

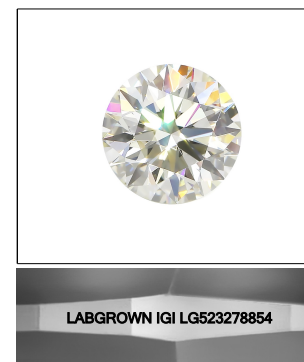


CLARITY CHARACTERISTICS



KEY TO SYMBOLS

Red symbols indicate internal characteristics. Green symbols indicate external characteristics.



LASERSCRIBESM

Sample Image Used

April 15, 2022

IGI Report Number

LG523278854

Description

LABORATORY GROWN DIAMOND

Shape and Cutting Style

ROUND BRILLIANT

Measurements

6.55 - 6.58 X 4.07 MM

GRADING RESULTS

Carat Weight

1.06 CARAT

Color Grade

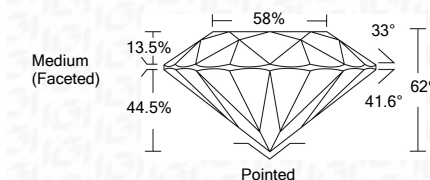
D

Clarity Grade

INTERNALLY FLAWLESS

Cut Grade

EXCELLENT



ADDITIONAL GRADING INFORMATION

Polish

EXCELLENT

Symmetry

EXCELLENT

Fluorescence

NONE

Inscription(s)

LABGROWN IGI LG523278854

Comments: As Grown - No indication of post-growth treatment. This Laboratory Grown Diamond was created by High Pressure High Temperature (HPHT) growth process. Type II



IGI

April 15, 2022

IGI Report No. LG523278854

ROUND BRILLIANT

6.55 - 6.58 X 4.07 MM

Carat Weight

1.06 CARAT

Color Grade

D

Clarity Grade

IF

Depth

62%

Table

58%

Girdle

Medium (Faceted)

Culet

Pointed

Polish

EXCELLENT

Symmetry

EXCELLENT

Fluorescence

NONE

Inscription(s)

LABGROWN IGI LG523278854

Comments: As Grown - No indication of post-growth treatment. This Laboratory Grown Diamond was created by High Pressure High Temperature (HPHT) growth process. Type II

