



# INTERNATIONAL GEMOLOGICAL INSTITUTE

## LABORATORY GROWN DIAMOND REPORT

### IGI LABORATORY GROWN DIAMOND IDENTIFICATION REPORT

April 18, 2022  
IGI Report Number LG523280625  
Description LABORATORY GROWN DIAMOND  
Shape and Cutting Style ROUND BRILLIANT  
Measurements 6.05 - 6.09 X 3.77 MM

### GRADING RESULTS

Carat Weight 0.85 CARAT  
Color Grade H  
Clarity Grade VS 1  
Cut Grade IDEAL

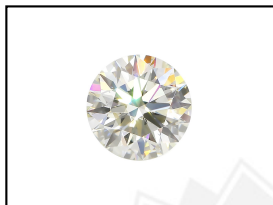
### ADDITIONAL GRADING INFORMATION

Polish EXCELLENT  
Symmetry EXCELLENT  
Fluorescence NONE  
Inscription(s) LABGROWN IGI LG523280625

Comments: Faint Blue  
As Grown - No indication of post-growth treatment.  
This Laboratory Grown Diamond was created by High Pressure High Temperature (HPHT) growth process.  
Type II

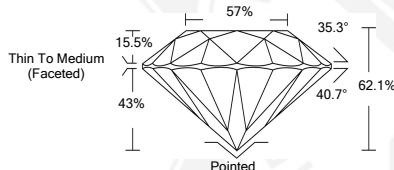
## ELECTRONIC COPY LABORATORY GROWN DIAMOND REPORT

LG523280625



LABGROWN IGI LG523280625

LASERSCRIBE<sup>SM</sup>  
Sample Images Used



### IGI LABORATORY GROWN DIAMOND ID REPORT

April 18, 2022  
IGI Report Number LG523280625  
**ROUND BRILLIANT**  
**6.05 - 6.09 X 3.77 MM**  
Carat Weight 0.85 CARAT  
Color Grade H  
Clarity Grade VS 1  
Cut Grade IDEAL  
Polish EXCELLENT  
Symmetry EXCELLENT  
Fluorescence NONE  
Inscription(s) LABGROWN IGI LG523280625

Comments: Faint Blue  
As Grown - No indication of post-growth treatment.  
This Laboratory Grown Diamond was created by High Pressure High Temperature (HPHT) growth process.  
Type II

### IGI LABORATORY GROWN DIAMOND ID REPORT

April 18, 2022  
IGI Report Number LG523280625  
**ROUND BRILLIANT**  
**6.05 - 6.09 X 3.77 MM**  
Carat Weight 0.85 CARAT  
Color Grade H  
Clarity Grade VS 1  
Cut Grade IDEAL  
Polish EXCELLENT  
Symmetry EXCELLENT  
Fluorescence NONE  
Inscription(s) LABGROWN IGI LG523280625

Comments: Faint Blue  
As Grown - No indication of post-growth treatment.  
This Laboratory Grown Diamond was created by High Pressure High Temperature (HPHT) growth process.  
Type II



THIS DOCUMENT WAS PRODUCED WITH THE FOLLOWING SECURITY MEASURES: SPECIAL DOCUMENT PAPER, INK SCREENS, WATERMARK, BACKGROUND DESIGN, HOLOGRAM AND OTHER SECURITY FEATURES NOT LISTED AND DO EXCEED DOCUMENT SECURITY INDUSTRY GUIDELINES.

For Terms & Conditions and to verify this report, please visit [www.igi.org](http://www.igi.org)