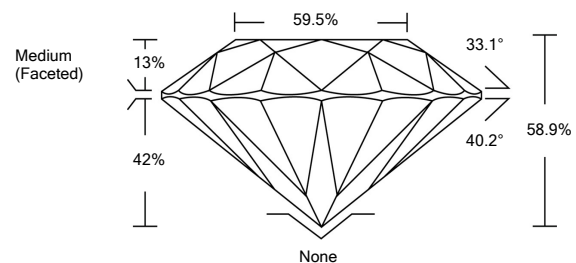




ELECTRONIC COPY

LG523280644

PROPORTIONS



GRADING SCALES

COLOR GRADING SCALE	CL	NC	FT	VL	LT	
	COLORLESS D-F	NEAR COLORLESS G-J	FAINT K-M	VERY LIGHT N-R	LIGHT S-Z	
CLARITY (10x) GRADING SCALE	FL	IF	VVS	VS	SI	I
	FLAWLESS INTERNALLY FLAWLESS	VERY VERY SLIGHTLY INCLUDED	VERY SLIGHTLY INCLUDED	SLIGHTLY INCLUDED	INCLUDED	

April 18, 2022

IGI Report Number

LG523280644

Description

**LABORATORY GROWN
DIAMOND**

Shape and Cutting Style

ROUND BRILLIANT

Measurements

7.93 - 7.97 X 4.68 MM

GRADING RESULTS

Carat Weight

1.82 CARAT

Color Grade

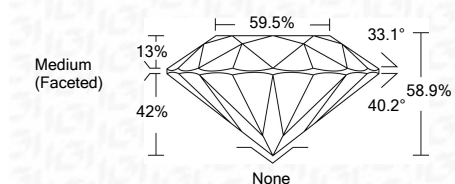
D

Clarity Grade

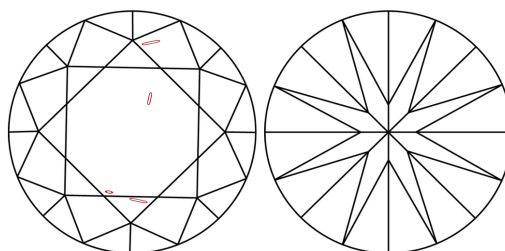
SI 1

Cut Grade

IDEAL

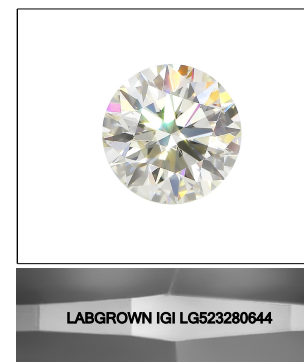


CLARITY CHARACTERISTICS



KEY TO SYMBOLS

Red symbols indicate internal characteristics.
Green symbols indicate external characteristics.



LASERSCRIBESM

Sample Image Used

ADDITIONAL GRADING INFORMATION

Polish

EXCELLENT

Symmetry

EXCELLENT

Fluorescence

NONE

Inscription(s)

LABGROWN IGI LG523280644

Comments: As Grown - No indication of post-growth treatment.
This Laboratory Grown Diamond was created by High Pressure High Temperature (HPHT) growth process.
Type II



IGI



April 18, 2022
IGI Report No. LG523280644
ROUND BRILLIANT
7.93 - 7.97 X 4.68 MM
Carat Weight

1.82 CARAT
D
SI 1
IDEAL
58.9%
59.5%
Medium (Faceted)

None
EXCELLENT
EXCELLENT
NONE
LABGROWN IGI
LG523280644

Comments: As Grown - No indication of post-growth treatment.
This Laboratory Grown Diamond was created by High Pressure High Temperature (HPHT) growth process.
Type II