

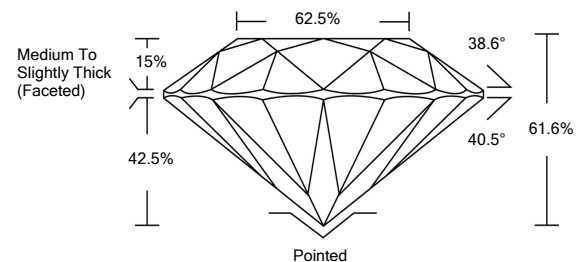


**ELECTRONIC COPY**

**LABORATORY GROWN DIAMOND REPORT**

LG523281126

**PROPORTIONS**



**GRADING SCALES**

COLOR GRADING SCALE	CL	NC	FT	VL	LT	
	COLORLESS D-F	NEAR COLORLESS G-J	FAINT K-M	VERY LIGHT N-R	LIGHT S-Z	
CLARITY (10x) GRADING SCALE	FL	IF	VVS	VS	SI	I
	FLAWLESS INTERNALLY FLAWLESS	VERY VERY SLIGHTLY INCLUDED	VERY SLIGHTLY INCLUDED	SLIGHTLY INCLUDED	INCLUDED	

April 23, 2022  
 IGI Report Number **LG523281126**  
 Description **LABORATORY GROWN DIAMOND**  
 Shape and Cutting Style **ROUND BRILLIANT**  
 Measurements **7.37 - 7.40 X 4.55 MM**

**GRADING RESULTS**

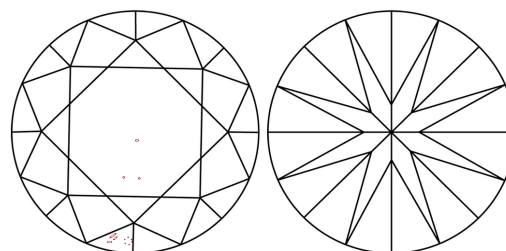
Carat Weight **1.57 CARAT**  
 Color Grade **K**  
 Clarity Grade **SI 1**  
 Cut Grade **VERY GOOD**

**ADDITIONAL GRADING INFORMATION**

Polish **VERY GOOD**  
 Symmetry **EXCELLENT**  
 Fluorescence **NONE**  
 Inscription(s) **LABGROWN IGI LG523281126**

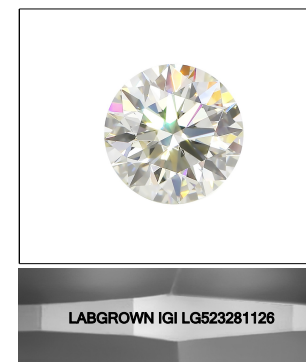
Comments: Very Light Yellowish Green  
 As Grown - No indication of post-growth treatment.  
 This Laboratory Grown Diamond was created by High Pressure High Temperature (HPHT) growth process.  
 Type II

**CLARITY CHARACTERISTICS**



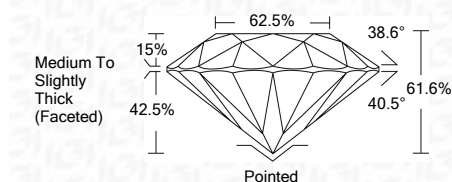
**KEY TO SYMBOLS**

Red symbols indicate internal characteristics.  
 Green symbols indicate external characteristics.



**LASERSCRIBE<sup>SM</sup>**  
 Sample Image Used

April 23, 2022  
 IGI Report Number **LG523281126**  
 Description **LABORATORY GROWN DIAMOND**  
 Shape and Cutting Style **ROUND BRILLIANT**  
 Measurements **7.37 - 7.40 X 4.55 MM**  
**GRADING RESULTS**  
 Carat Weight **1.57 CARAT**  
 Color Grade **K**  
 Clarity Grade **SI 1**  
 Cut Grade **VERY GOOD**



**ADDITIONAL GRADING INFORMATION**

Polish **VERY GOOD**  
 Symmetry **EXCELLENT**  
 Fluorescence **NONE**  
 Inscription(s) **LABGROWN IGI LG523281126**

Comments: Very Light Yellowish Green  
 As Grown - No indication of post-growth treatment.  
 This Laboratory Grown Diamond was created by High Pressure High Temperature (HPHT) growth process.  
 Type II



**IGI**



April 23, 2022  
 IGI Report No. **LG523281126**  
**ROUND BRILLIANT**  
 Measurements **7.37 - 7.40 X 4.55 MM**  
 Carat Weight **1.57 CARAT**  
 Color Grade **K**  
 Clarity Grade **SI 1**  
 Cut Grade **VERY GOOD**  
 Depth **61.6%**  
 Table **62.5%**  
 Girdle **Medium To Slightly Thick (Faceted)**  
 Culet **Pointed**  
 Polish **VERY GOOD**  
 Symmetry **EXCELLENT**  
 Fluorescence **NONE**  
 Inscription(s) **LABGROWN IGI LG523281126**  
 Comments: **Very Light Yellowish Green**  
**As Grown - No indication of post-growth treatment.**  
**This Laboratory Grown Diamond was created by High Pressure High Temperature (HPHT) growth process.**  
**Type II**