



**ELECTRONIC COPY**

**LABORATORY GROWN DIAMOND REPORT**

May 19, 2022  
 IGI Report Number **LG523282393**  
 Description **LABORATORY GROWN  
DIAMOND**  
 Shape and Cutting Style **ROUND BRILLIANT**  
 Measurements **8.70 - 8.74 X 5.37 MM**

**GRADING RESULTS**

Carat Weight **2.51 CARATS**  
 Color Grade **D**  
 Clarity Grade **VVS 2**  
 Cut Grade **IDEAL**

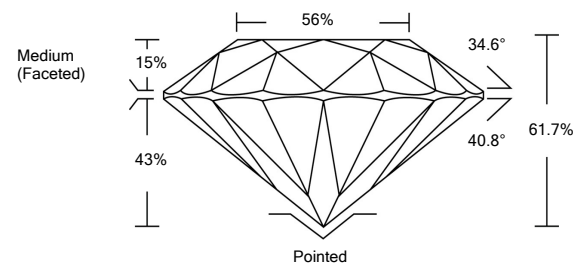
**ADDITIONAL GRADING INFORMATION**

Polish **EXCELLENT**  
 Symmetry **EXCELLENT**  
 Fluorescence **NONE**  
 Inscription(s) **LABGROWN IGI LG523282393**

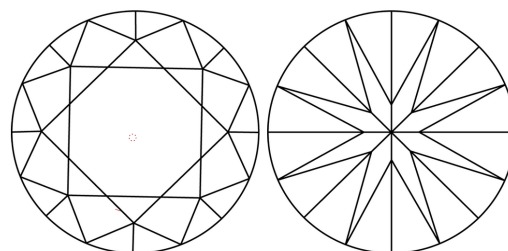
Comments: As Grown - No indication of post-growth treatment. This Laboratory Grown Diamond was created by High Pressure High Temperature (HPHT) growth process. Type II

LG523282393

**PROPORTIONS**



**CLARITY CHARACTERISTICS**



**KEY TO SYMBOLS**

Red symbols indicate internal characteristics.  
 Green symbols indicate external characteristics.

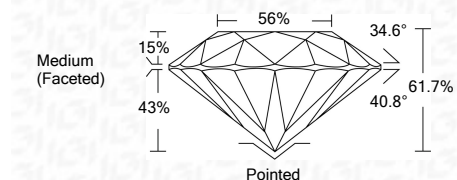
**GRADING SCALES**

COLOR GRADING SCALE	CL	NC	FT	VLT	LT	
	COLORLESS D-F	NEAR COLORLESS G-J	FAINT K-M	VERY LIGHT N-R	LIGHT S-Z	
CLARITY (10x) GRADING SCALE	FL	IF	VVS	VS	SI	I
	FLAWLESS INTERNALLY FLAWLESS	VERY VERY SLIGHTLY INCLUDED	VERY SLIGHTLY INCLUDED	SLIGHTLY INCLUDED	INCLUDED	

May 19, 2022  
 IGI Report Number **LG523282393**  
 Description **LABORATORY GROWN  
DIAMOND**  
 Shape and Cutting Style **ROUND BRILLIANT**  
 Measurements **8.70 - 8.74 X 5.37 MM**

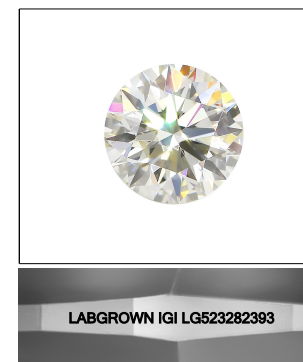
**GRADING RESULTS**

Carat Weight **2.51 CARATS**  
 Color Grade **D**  
 Clarity Grade **VVS 2**  
 Cut Grade **IDEAL**



**ADDITIONAL GRADING INFORMATION**

Polish **EXCELLENT**  
 Symmetry **EXCELLENT**  
 Fluorescence **NONE**  
 Inscription(s) **LABGROWN IGI LG523282393**  
 Comments: As Grown - No indication of post-growth treatment. This Laboratory Grown Diamond was created by High Pressure High Temperature (HPHT) growth process. Type II



**LASERSCRIBE<sup>SM</sup>**  
Sample Image Used



**IGI**

IGI Report No. <b>LG523282393</b>	<b>2.51 CARATS</b>	<b>D</b>	<b>Pointed</b>
<b>ROUND BRILLIANT</b>	<b>VVS 2</b>	<b>EXCELLENT</b>	<b>EXCELLENT</b>
<b>8.70 - 8.74 X 5.37 MM</b>	<b>IDEAL</b>	<b>EXCELLENT</b>	<b>EXCELLENT</b>
Carat Weight	<b>61.7%</b>	<b>NONE</b>	<b>LABGROWN IGI LG523282393</b>
Color Grade	<b>56%</b>		
Clarity Grade	<b>Medium (Faceted)</b>		
Cut Grade			
Depth			
Table			
Girdle			
Culet			
Polish			
Symmetry			
Fluorescence			
Inscription(s)			
Comments:			
As Grown - No indication of post-growth treatment. This Laboratory Grown Diamond was created by High Pressure High Temperature (HPHT) growth process. Type II			