



**INTERNATIONAL
GEMOLOGICAL
INSTITUTE**

LABORATORY GROWN DIAMOND REPORT

IGI LABORATORY GROWN DIAMOND IDENTIFICATION REPORT

April 13, 2022
 IGI Report Number LG523288905
 Description LABORATORY GROWN DIAMOND
 Shape and Cutting Style CUSHION BRILLIANT
 Measurements 5.52 X 4.89 X 3.33 MM

GRADING RESULTS

Carat Weight 0.81 CARAT
 Color Grade FANCY INTENSE YELLOW
 Clarity Grade VS 2

ADDITIONAL GRADING INFORMATION

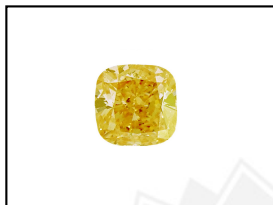
Polish VERY GOOD
 Symmetry GOOD
 Fluorescence NONE
 Inscription(s) LABGROWN IGI LG523288905

Comments: As Grown - No indication of post-growth treatment.
 This Laboratory Grown Diamond was created by High Pressure High Temperature (HPHT) growth process.

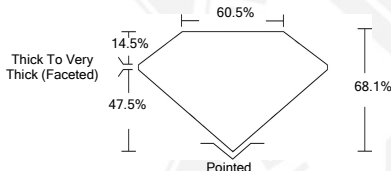
ELECTRONIC COPY

**LABORATORY GROWN
DIAMOND REPORT**

LG523288905



LASERSCRIBESM
Sample Images Used



**IGI LABORATORY GROWN
DIAMOND ID REPORT**

April 13, 2022
 IGI Report Number **LG523288905**
CUSHION BRILLIANT
5.52 X 4.89 X 3.33 MM
 Carat Weight 0.81 CARAT
 Color Grade FANCY INTENSE YELLOW
 Clarity Grade VS 2
 Polish VERY GOOD
 Symmetry GOOD
 Fluorescence NONE
 Inscription(s) LABGROWN IGI LG523288905

Comments: As Grown - No indication of post-growth treatment.
 This Laboratory Grown Diamond was created by High Pressure High Temperature (HPHT) growth process.

**IGI LABORATORY GROWN
DIAMOND ID REPORT**

April 13, 2022
 IGI Report Number **LG523288905**
CUSHION BRILLIANT
5.52 X 4.89 X 3.33 MM
 Carat Weight 0.81 CARAT
 Color Grade FANCY INTENSE YELLOW
 Clarity Grade VS 2
 Polish VERY GOOD
 Symmetry GOOD
 Fluorescence NONE
 Inscription(s) LABGROWN IGI LG523288905

Comments: As Grown - No indication of post-growth treatment.
 This Laboratory Grown Diamond was created by High Pressure High Temperature (HPHT) growth process.

THIS DOCUMENT WAS PRODUCED WITH THE FOLLOWING SECURITY MEASURES: SPECIAL DOCUMENT PAPER, INK SCREENS, WATERMARK, BACKGROUND DESIGN, HOLOGRAM AND OTHER SECURITY FEATURES NOT LISTED AND DO EXCEEDED DOCUMENT SECURITY INDUSTRY GUIDELINES.

For Terms & Conditions and to verify this report, please visit www.igi.org