

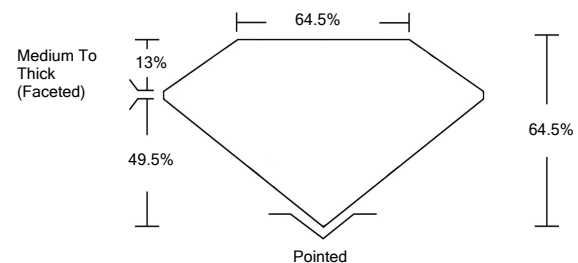


**ELECTRONIC COPY**

**LABORATORY GROWN DIAMOND REPORT**

LG523297795

**PROPORTIONS**



**GRADING SCALES**

| COLOR GRADING SCALE         | CL                           | NC                          | FT                     | VL                | LT        |   |
|-----------------------------|------------------------------|-----------------------------|------------------------|-------------------|-----------|---|
|                             | COLORLESS D-F                | NEAR COLORLESS G-J          | FAINT K-M              | VERY LIGHT N-R    | LIGHT S-Z |   |
| CLARITY (10x) GRADING SCALE | FL                           | IF                          | VVS                    | VS                | SI        | I |
|                             | FLAWLESS INTERNALLY FLAWLESS | VERY VERY SLIGHTLY INCLUDED | VERY SLIGHTLY INCLUDED | SLIGHTLY INCLUDED | INCLUDED  |   |

|                         |                                 |
|-------------------------|---------------------------------|
| April 22, 2022          |                                 |
| IGI Report Number       | <b>LG523297795</b>              |
| Description             | <b>LABORATORY GROWN DIAMOND</b> |
| Shape and Cutting Style | <b>SQUARE CUSHION BRILLIANT</b> |
| Measurements            | <b>7.53 X 7.50 X 4.84 MM</b>    |

|                         |                                 |
|-------------------------|---------------------------------|
| April 22, 2022          |                                 |
| IGI Report Number       | <b>LG523297795</b>              |
| Description             | <b>LABORATORY GROWN DIAMOND</b> |
| Shape and Cutting Style | <b>SQUARE CUSHION BRILLIANT</b> |
| Measurements            | <b>7.53 X 7.50 X 4.84 MM</b>    |

**GRADING RESULTS**

|               |                    |
|---------------|--------------------|
| Carat Weight  | <b>2.08 CARATS</b> |
| Color Grade   | <b>D</b>           |
| Clarity Grade | <b>SI 1</b>        |

|                        |                    |
|------------------------|--------------------|
| <b>GRADING RESULTS</b> |                    |
| Carat Weight           | <b>2.08 CARATS</b> |
| Color Grade            | <b>D</b>           |
| Clarity Grade          | <b>SI 1</b>        |

**ADDITIONAL GRADING INFORMATION**

|                |                                 |
|----------------|---------------------------------|
| Polish         | <b>EXCELLENT</b>                |
| Symmetry       | <b>EXCELLENT</b>                |
| Fluorescence   | <b>NONE</b>                     |
| Inscription(s) | <b>LABGROWN IGI LG523297795</b> |

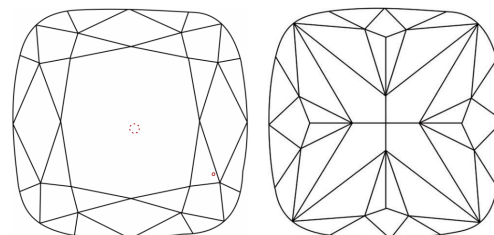
**ADDITIONAL GRADING INFORMATION**

|                |                                 |
|----------------|---------------------------------|
| Polish         | <b>EXCELLENT</b>                |
| Symmetry       | <b>EXCELLENT</b>                |
| Fluorescence   | <b>NONE</b>                     |
| Inscription(s) | <b>LABGROWN IGI LG523297795</b> |

Comments: This Laboratory Grown Diamond was created by Chemical Vapor Deposition (CVD) growth process and may include post-growth treatment. Type IIa

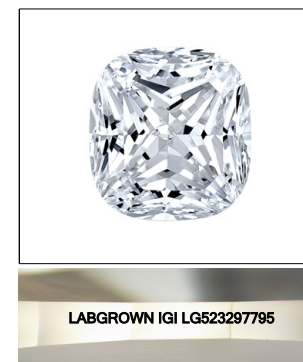
Comments: This Laboratory Grown Diamond was created by Chemical Vapor Deposition (CVD) growth process and may include post-growth treatment. Type IIa

**CLARITY CHARACTERISTICS**



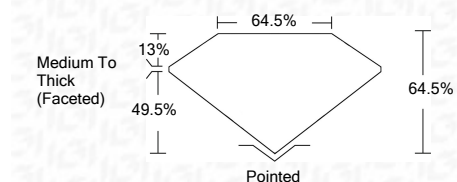
**KEY TO SYMBOLS**

Red symbols indicate internal characteristics.  
Green symbols indicate external characteristics.



**LASERSCRIBE<sup>SM</sup>**

Sample Image Used



**IGI**

|                |                            |                                 |                    |                                  |
|----------------|----------------------------|---------------------------------|--------------------|----------------------------------|
| April 22, 2022 | IGI Report No. LG523297795 | <b>SQUARE CUSHION BRILLIANT</b> | <b>2.08 CARATS</b> | <b>D</b>                         |
|                |                            | <b>7.53 X 7.50 X 4.84 MM</b>    |                    | <b>SI 1</b>                      |
|                |                            | Carat Weight                    |                    | <b>64.5%</b>                     |
|                |                            | Color Grade                     |                    | <b>Medium To Thick (Faceted)</b> |
|                |                            | Clarity Grade                   |                    | <b>Pointed</b>                   |
|                |                            | Depth                           |                    | <b>EXCELLENT</b>                 |
|                |                            | Table                           |                    | <b>EXCELLENT</b>                 |
|                |                            | Girdle                          |                    | <b>NONE</b>                      |
|                |                            | Culet                           |                    | <b>LABGROWN IGI LG523297795</b>  |
|                |                            | Polish                          |                    |                                  |
|                |                            | Symmetry                        |                    |                                  |
|                |                            | Fluorescence                    |                    |                                  |
|                |                            | Inscription(s)                  |                    |                                  |
|                |                            | Comments:                       |                    |                                  |

This Laboratory Grown Diamond was created by Chemical Vapor Deposition (CVD) growth process and may include post-growth treatment. Type IIa