



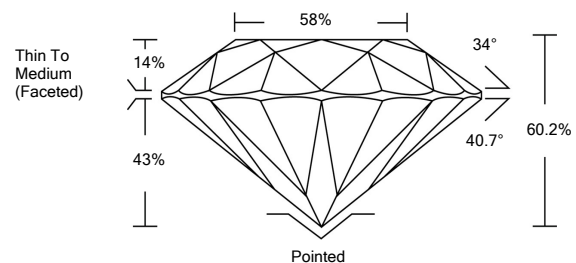
ELECTRONIC COPY

LG524209624

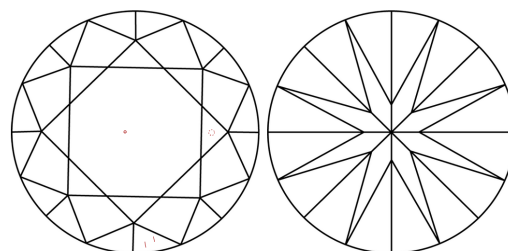
GRADING SCALES

COLOR GRADING SCALE	CL	NC	FT	VLT	LT	
	COLORLESS D-F	NEAR COLORLESS G-J	FAINT K-M	VERY LIGHT N-R	LIGHT S-Z	
CLARITY (10x) GRADING SCALE	FL	IF	VVS	VS	SI	I
	FLAWLESS INTERNALLY FLAWLESS	VERY VERY SLIGHTLY INCLUDED	VERY SLIGHTLY INCLUDED	SLIGHTLY INCLUDED	INCLUDED	

PROPORTIONS

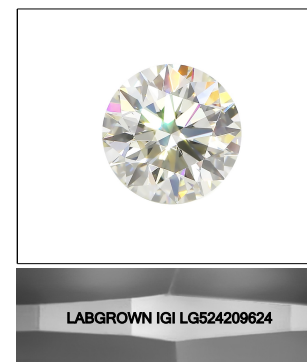
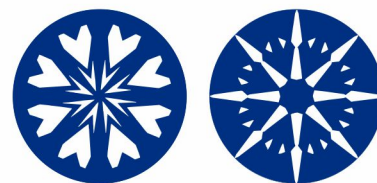


CLARITY CHARACTERISTICS



KEY TO SYMBOLS

Red symbols indicate internal characteristics. Green symbols indicate external characteristics.



LASERSCRIBESM

Sample Image Used

April 13, 2022

IGI Report Number

LG524209624

Description

LABORATORY GROWN DIAMOND

Shape and Cutting Style

ROUND BRILLIANT

Measurements

8.79 - 8.82 X 5.30 MM

GRADING RESULTS

Carat Weight

2.51 CARATS

Color Grade

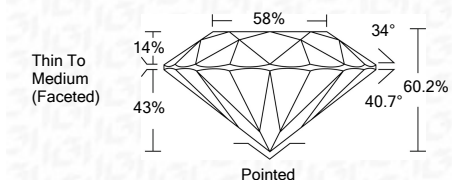
E

Clarity Grade

VS 1

Cut Grade

IDEAL



ADDITIONAL GRADING INFORMATION

Polish

EXCELLENT

Symmetry

EXCELLENT

Fluorescence

NONE

Inscription(s)

LABGROWN IGI LG524209624

Comments: HEARTS & ARROWS

As Grown - No indication of post-growth treatment. This Laboratory Grown Diamond was created by High Pressure High Temperature (HPHT) growth process. Type II



IGI

April 13, 2022
IGI Report No. LG524209624
ROUND BRILLIANT

8.79 - 8.82 X 5.30 MM
Carat Weight

2.51 CARATS

E

VS 1

IDEAL

60.2%

58%

Thin To Medium (Faceted)

Pointed

EXCELLENT

EXCELLENT

NONE

LABGROWN IGI LG524209624

HEARTS & ARROWS

As Grown - No indication of post-growth treatment.

This Laboratory Grown Diamond was created by High Pressure High Temperature (HPHT) growth process. Type II

