



ELECTRONIC COPY

LABORATORY GROWN DIAMOND REPORT

April 19, 2022
IGI Report Number LG524212079
Description LABORATORY GROWN DIAMOND
Shape and Cutting Style ROUND BRILLIANT
Measurements 8.64 - 8.67 X 5.28 MM

GRADING RESULTS

Carat Weight 2.45 CARATS
Color Grade J
Clarity Grade VS 1
Cut Grade IDEAL

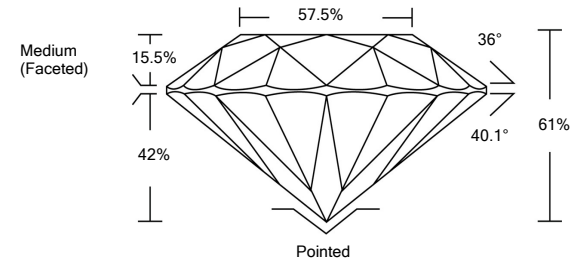
ADDITIONAL GRADING INFORMATION

Polish EXCELLENT
Symmetry EXCELLENT
Fluorescence NONE
Inscription(s) LABGROWN IGI LG524212079

Comments: This Laboratory Grown Diamond was created by Chemical Vapor Deposition (CVD) growth process and may include post-growth treatment. Type IIa

LG524212079

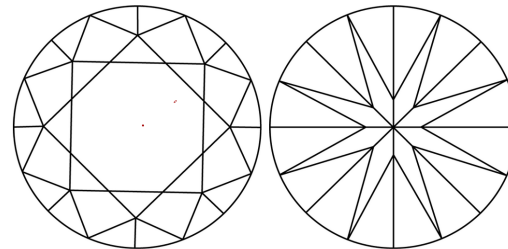
PROPORTIONS



GRADING SCALES

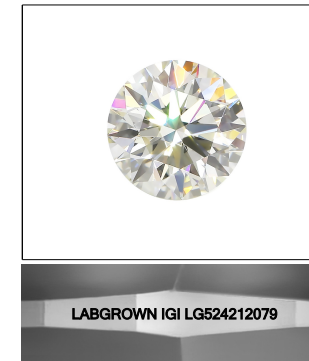
Table with 5 columns for Color Grading Scale (CL to LT) and Clarity (10x) Grading Scale (FL to I). Color scale ranges from Colorless (D-F) to Light (S-Z). Clarity scale ranges from Flawless Internally Flawless to Included.

CLARITY CHARACTERISTICS



KEY TO SYMBOLS

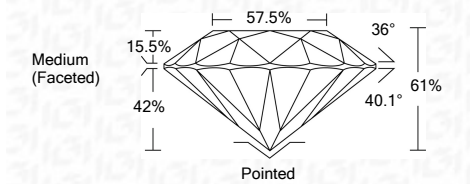
Red symbols indicate internal characteristics.
Green symbols indicate external characteristics.



LASERSCRIBE SM

Sample Image Used

April 19, 2022
IGI Report Number LG524212079
Description LABORATORY GROWN DIAMOND
Shape and Cutting Style ROUND BRILLIANT
Measurements 8.64 - 8.67 X 5.28 MM
GRADING RESULTS
Carat Weight 2.45 CARATS
Color Grade J
Clarity Grade VS 1
Cut Grade IDEAL



ADDITIONAL GRADING INFORMATION

Polish EXCELLENT
Symmetry EXCELLENT
Fluorescence NONE
Inscription(s) LABGROWN IGI LG524212079

Comments: This Laboratory Grown Diamond was created by Chemical Vapor Deposition (CVD) growth process and may include post-growth treatment. Type IIa



April 19, 2022
IGI Report No. LG524212079
ROUND BRILLIANT
8.64 - 8.67 X 5.28 MM
Carat Weight 2.45 CARATS
Color Grade J
Clarity Grade VS 1
Cut Grade IDEAL
Depth 61%
Table 57.5%
Girdle Medium (Faceted)
Culet Pointed
Polish EXCELLENT
Symmetry EXCELLENT
Fluorescence NONE
Inscription(s) LABGROWN IGI LG524212079
Comments: This Laboratory Grown Diamond was created by Chemical Vapor Deposition (CVD) growth process and may include post-growth treatment. Type IIa