



**INTERNATIONAL
GEMOLOGICAL
INSTITUTE**

ELECTRONIC COPY

**LABORATORY GROWN
DIAMOND REPORT**

**IGI LABORATORY GROWN
DIAMOND ID REPORT**

June 9, 2022
IGI Report Number **LG524215335**

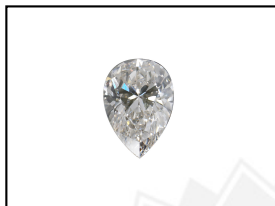
LABORATORY GROWN DIAMOND REPORT

LG524215335

PEAR BRILLIANT
6.80 X 4.43 X 2.85 MM
Carat Weight 0.51 CARAT
Color Grade E
Clarity Grade SI 1
Polish VERY GOOD
Symmetry EXCELLENT
Fluorescence NONE
Inscription(s) LABGROWN IGI
LG524215335

IGI LABORATORY GROWN DIAMOND IDENTIFICATION REPORT

June 9, 2022
IGI Report Number LG524215335
Description LABORATORY GROWN DIAMOND
Shape and Cutting Style PEAR BRILLIANT
Measurements 6.80 X 4.43 X 2.85 MM



Comments: This Laboratory Grown Diamond was created by Chemical Vapor Deposition (CVD) growth process and may include post-growth treatment. Type IIa

GRADING RESULTS

Carat Weight 0.51 CARAT
Color Grade E
Clarity Grade SI 1

LASERSCRIBESM
Sample Images Used



ADDITIONAL GRADING INFORMATION

Polish VERY GOOD
Symmetry EXCELLENT
Fluorescence NONE
Inscription(s) LABGROWN IGI LG524215335

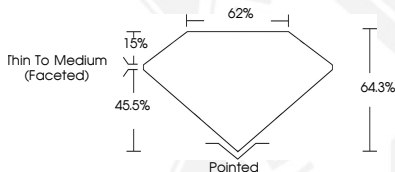
Comments: This Laboratory Grown Diamond was created by Chemical Vapor Deposition (CVD) growth process and may include post-growth treatment. Type IIa

**IGI LABORATORY GROWN
DIAMOND ID REPORT**

June 9, 2022
IGI Report Number **LG524215335**

PEAR BRILLIANT
6.80 X 4.43 X 2.85 MM
Carat Weight 0.51 CARAT
Color Grade E
Clarity Grade SI 1
Polish VERY GOOD
Symmetry EXCELLENT
Fluorescence NONE
Inscription(s) LABGROWN IGI
LG524215335

Comments: This Laboratory Grown Diamond was created by Chemical Vapor Deposition (CVD) growth process and may include post-growth treatment. Type IIa



THIS DOCUMENT WAS PRODUCED WITH THE FOLLOWING SECURITY MEASURES: SPECIAL DOCUMENT PAPER, INK SCREENS, WATERMARK, BACKGROUND DESIGN, HOLOGRAM AND OTHER SECURITY FEATURES NOT LISTED AND DO EXCEED DOCUMENT SECURITY INDUSTRY GUIDELINES.

For terms & conditions and to verify this report, please visit www.igi.org